



FEMA Flood Map Service Center: Search By Address

Navigation

Search

Languages

MSC Home (/portal/)

MSC Search by Address (/portal/search)

MSC Search All Products (/portal/advanceSearch)

▼ MSC Products and Tools (/portal/resources/productsandtools)

Hazus (/portal/resources/hazus)

LOMC Batch Files (/portal/resources/lomc)

Product Availability (/portal/productAvailability)

MSC Frequently Asked Questions (FAQs) (/portal/resources/faq)

MSC Email Subscriptions (/portal/subscriptionHome)

Contact MSC Help (/portal/resources/contact)

Enter an address, place, or coordinates:

22900 S Breeze St San Antonio TX

Search

Whether you are in a high risk zone or not, you may need [flood insurance](https://www.fema.gov/national-flood-insurance-program) because most homeowners insurance doesn't cover flood damage. If you live in an area with low or moderate flood risk, you are 5 times more likely to experience flood than a fire in your home over the next 30 years. For many, a National Flood Insurance Program's flood insurance policy could cost less than \$400 per year. Call your insurance agent today and protect what you've built.

Learn more about [steps you can take](https://www.fema.gov/what-mitigation) to reduce flood risk damage.

Search Results—Products for BEXAR COUNTY UNINCORPORATED AREAS

Show ALL Products » (<https://msc.fema.gov/portal/availabilitySearch?addcommunity=480035&communityName=BEXAR COUN>)

The flood map for the selected area is number **48029C0140G**, effective on **09/29/2010**

DYNAMIC MAP



PRINT MAP / FIRMette

MAP IMAGE



DOWNLOAD FIRM PANEL

Changes to this FIRM

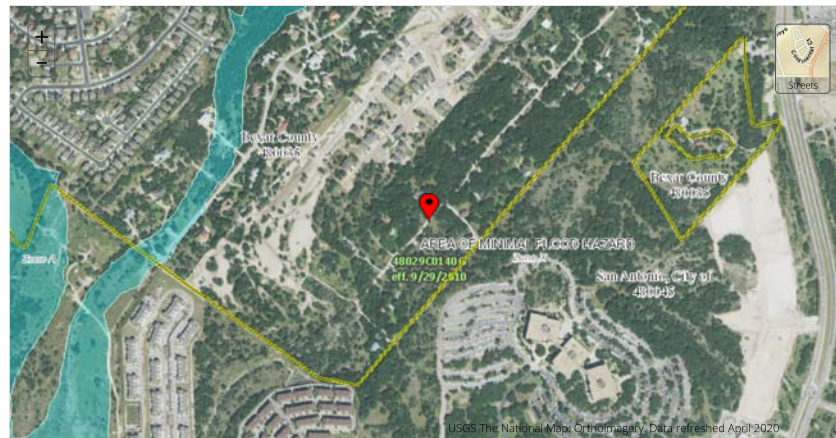
- Revisions (3)
- Amendments (5)
- Revalidations (3)

(<https://msc.fema.gov/portal/downloadProduct?>

[filepath=/48/P/Firm/48029C0140G.tif&productTypeID=FINAL_PRODUCT&productSubTypeID=FIRM_PANEL&productID=48029C0140G](https://msc.fema.gov/portal/downloadProduct?filepath=/48/P/Firm/48029C0140G.tif&productTypeID=FINAL_PRODUCT&productSubTypeID=FIRM_PANEL&productID=48029C0140G))

You can choose a new flood map or move the location pin by selecting a different location on the locator map below or by entering a new location in the search field above. It may take a minute or more during peak hours to generate a dynamic FIRMette. If you are a person with a disability, are blind, or have low vision, and need assistance, please contact a map specialist (<https://msc.fema.gov/portal/resources/contact>).

Go To NFHL Viewer » (<https://hazards-fema.maps.arcgis.com/apps/webappviewer/index.html?id=8b0adb51996444d487933f>)



Share This Page.

- [Home \(/www.fema.gov/\)](http://www.fema.gov/)
- [Download Plug-ins \(/www.fema.gov/download-plugin-ins\)](https://www.fema.gov/download-plugin-ins)
- [About Us \(/www.fema.gov/about-agency\)](https://www.fema.gov/about-agency)
- [Privacy Policy \(/www.fema.gov/privacy-policy\)](https://www.fema.gov/privacy-policy)
- [FOIA \(/www.fema.gov/foia\)](https://www.fema.gov/foia)
- [Office of the Inspector General \(/www.oig.dhs.gov/\)](https://www.oig.dhs.gov/)
- [Strategic Plan \(/www.fema.gov/fema-strategic-plan\)](https://www.fema.gov/fema-strategic-plan)
- [Whitehouse.gov \(/www.whitehouse.gov\)](https://www.whitehouse.gov/)
- [DHS.gov \(/www.dhs.gov\)](https://www.dhs.gov/)
- [Ready.gov \(/www.ready.gov\)](https://www.ready.gov/)
- [USA.gov \(/www.usa.gov\)](https://www.usa.gov/)
- [DisasterAssistance.gov \(/www.disasterassistance.gov/\)](https://www.disasterassistance.gov/)