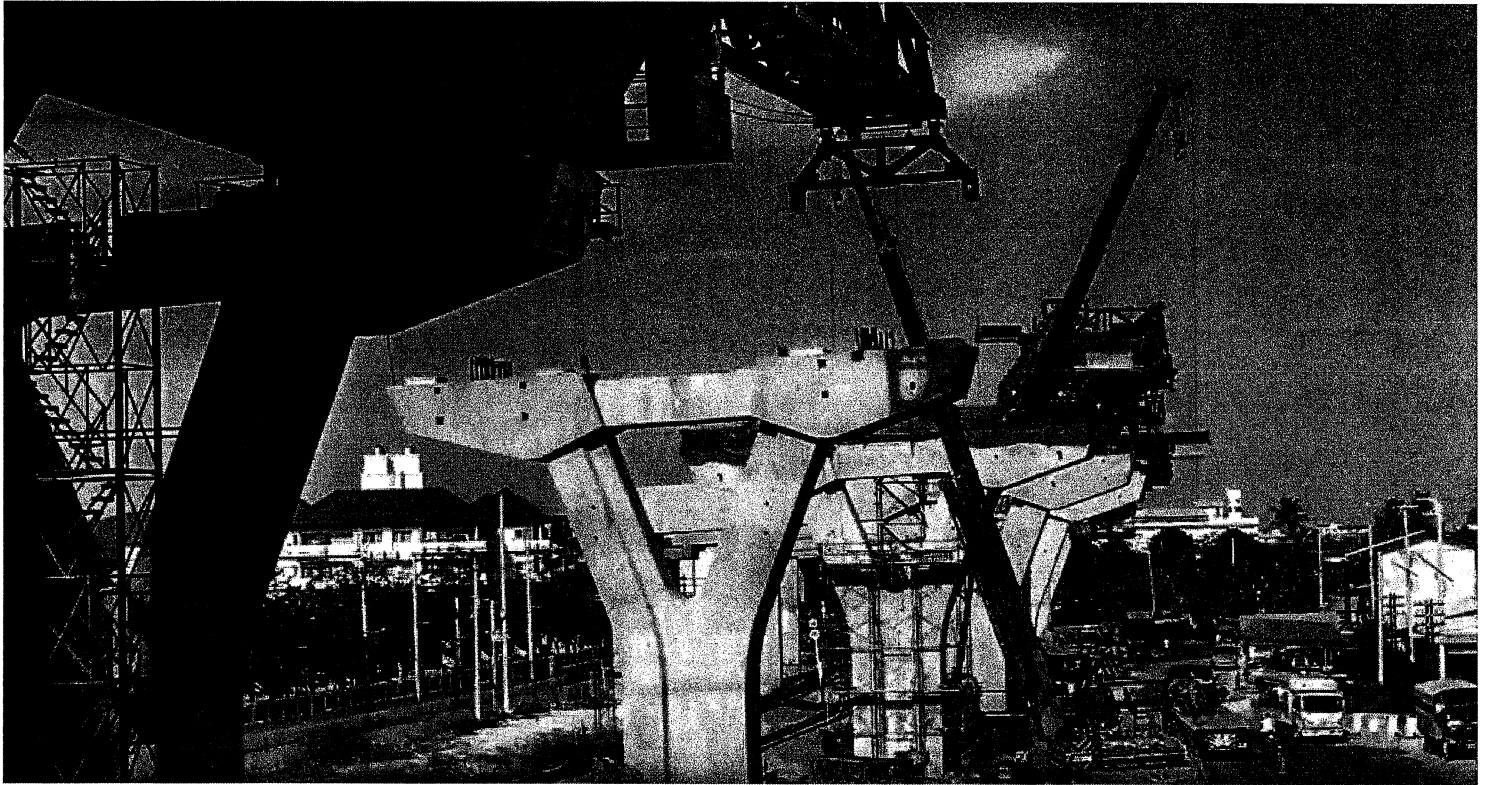


Discover The Benefits

[Home](#)

[Discover The Benefits](#)



HIGH-SPEED ECONOMIC GROWTH FOR TEXAS

The Texas High-Speed Train will have substantial and long-lasting benefits for the local, state and national economy. This unprecedented private investment will spur economic development, create tens of thousands of jobs and infuse tax revenue into the state and local communities.

RELIEVING CONGESTION: TRAFFIC BETWEEN NORTH TEXAS AND HOUSTON IS EXPECTED TO...

Cars, trucks, 18-wheelers and motorcycles crowd Interstate 45 between Houston and North Texas, with travel times often approaching and sometimes exceeding five hours, depending on road and weather conditions. The Texas Department of Transportation estimates that this trek could take upwards of 6.5 hours by 2035. Similarly, a 2010 study of intercity travel in Texas estimated that the average travel speeds of approximately 60 mph along the I-45 corridor would drop almost 35 percent to 40 mph – making for a 6.5-hour drive between North Texas and Houston. This increase in travel time includes all planned improvements and increased highway capacity.

Passengers on the high-speed train system will leave traffic jams, construction delays and flat tires behind as they zip effortlessly between the two regions. A more pleasant and productive experience will be an oasis for business and leisure travelers alike. And for those who continue to drive, more passengers on the train means fewer people in front of you on the highway. It's a win-win for Texans and it's going to be here before you know it.

ENVIRONMENTALLY SOUND

The N700 train consumes 1/8th less energy per seat and expends 1/12th carbon dioxide than a Boeing B777-200*. The Series N700 was designed and has continuously evolved to operate in some of Japan's most dense urban environments; it embodies decades of applied research, making it one of the quietest trains in the world. *Data based on Tokyo-Osaka line

Although a private-sector project, government agencies will play an important role in certifying the technology, reviewing the project's environmental impacts, coordination during the project's construction and regulating the system's operations.

High-Speed, Low-Impact:



[VIEW THE FACT SHEET](#)

COMMITTED TO SAFETY

High-speed trains are the safest way to travel between cities. In fact, millions of passengers ride high-speed trains every day across Europe and Asia. During more than 54 years of high-speed train operation in Japan, Shinkansen trains have had ZERO fatalities due to train accidents because of the system's thoughtful design, rigorous maintenance and sophisticated, safety-first operating procedures.

To learn from that long experience, Texas Central designers and engineers consult with global leaders in the high-speed train industry to ensure that the latest technologies and highest standards for safety are brought to Texas.

Texas Central's commitment to safety permeates every aspect of the train system's design, including:

-  **A Total System Approach**
Seamlessly integrates signaling, infrastructure design, track work, communications, power supply, operations, maintenance, rolling stock and the system safety plan into a coherent whole
-  **Separated Track System**
A track system completely separated from other modes of transportation and dedicated solely to high-speed passenger train service, preventing any possible encounter with freight traffic, motor vehicles or pedestrians
- ATC Signaling Technology**



JRC's state-of-the-art and proprietary Automatic Train Control (ATC) signaling technology, which will provide equivalent or even better safety levels than those in use in the U.S. today

Life On The Fast Train

[Home](#) [Life On The Fast Train](#)

LIFE ON THE FAST TRAIN

A BETTER WAY TO TRAVEL

If you frequently travel between Houston, North Texas, and the Brazos Valley, you understand why Texans are demanding more and better travel options within the state. Current choices are stressful, inefficient and can be downright dangerous.

TEXANS DESERVE BETTER

High-speed trains provide a BETTER WAY to travel the Lone Star State by removing the many pain points of driving and flying. From flexible booking options and seamless interchanges to frictionless security, wide aisles, comfortable seating, fast WIFI and food and beverage service, high-speed trains provide an anxiety-free travel experience for families, business travelers, students, tourists and anyone else traveling between North Texas, the Brazos Valley and Houston.

It's Comfortable. It's Safe. It's Reliable. It's a BETTER way to travel Texas.

A STREAMLINED TRAVEL EXPERIENCE

A BETTER WAY



HOU

9:30 AM - 11:00 AM	SS
9:30 AM - 11:00 AM	SS
10:00 AM - 11:30 AM	SS
10:00 AM - 11:30 AM	SS

NTX

TRIP SUMMARY

APRIL 25, 2017

HOU → NTX

10:00 AM → 11:30 AM

+ VIEW DETAILS

TRANSPORTATION

CONFIRM CODES

HOTEL

no "middle-seat" squeeze

No Middle-Seat Squeeze

Texas High-Speed Train passengers will enjoy Texas-sized seats with A LOT MORE LEGROOM and NO MIDDLE SEATS EVER. Blazing fast WIFI will be at your fingertips and you'll never have to turn electronics on and off for take-off and landing. Your phone is always on "train" mode.

02

Easy Booking

Ultra-fast booking options allow for dependability, efficiency and flexibility you could never get with air travel. And, if you're running late, the Texas system will detect that and automatically prompt your phone with alternative departure times.

03

Family Friendly

You'll never have to worry about removing a child from a stroller before boarding and extra-wide aisles allow for strollers to easily navigate the station and train cars.

04

Accessible

Travelers with disabilities will have the option to stay in their wheelchairs for the entirety of the ride, while still being able to move freely around the train. Service animals can be accommodated at any seat, not just in bulkhead rows.

And, high-speed trains also have multiple doors for fast and easy loading and unloading during boarding and departure, no more waiting on the tarmac, queuing of wheelchairs or struggles to load up stairs to a bus or vehicle.

A SAFE WAY TO TRAVEL TEXAS

A BETTER WAY



The Texas High-Speed Train system will utilize the world's safest mass transportation technology, the Shinkansen System, which has operated in Japan for 50+ years with **ZERO** fatalities during operations. Think about that.

In 2016 alone, there were 3,773 fatalities on Texas roads. And, unfortunately, many of these fatalities occur on the stretch of I-45 between North Texas and Houston, which consistently ranks as one of the most dangerous in the U.S. Texans are demanding a better choice.

With the Texas train, you will not have to endure another dangerous, unpredictable slog on that highway again. And, say goodbye to crowded airports, flight delays, cumbersome security checks and skinny airplane seats and aisles, just to take a short flight across the state.

Texans deserve better. This train delivers.

A SECURE WAY TO TRAVEL TEXAS

A BETTER WAY

Train travel is fundamentally different than air travel. No intrusive airport security measures that result in disrobing and unpacking. On this train, you can keep your boots on!

Texas Central is committed to providing a world-class, safe and comfortable experience, building the latest security technology into the stations and design. Already, industry experts with extensive experience in global transportation security are working on comprehensive plans to ensure the safety of the system, passengers and employees. The project's security team has an ongoing dialogue with the Department of Homeland Security, Department of Public Safety, and the Transportation Security Administration to discuss and implement procedures.

For these reasons and many more, high-speed trains will be the preferred mode of travel for millions of Texans moving between the two regions.

IT'S ABOUT TIME TEXAS

FOR A BETTER WAY



For Better Safety



For Better Access



For Better Reliability



For Better Comfort