

RULES OF PRIVATE AND PRIVATE PARK OR PARK LAND DEDICATION

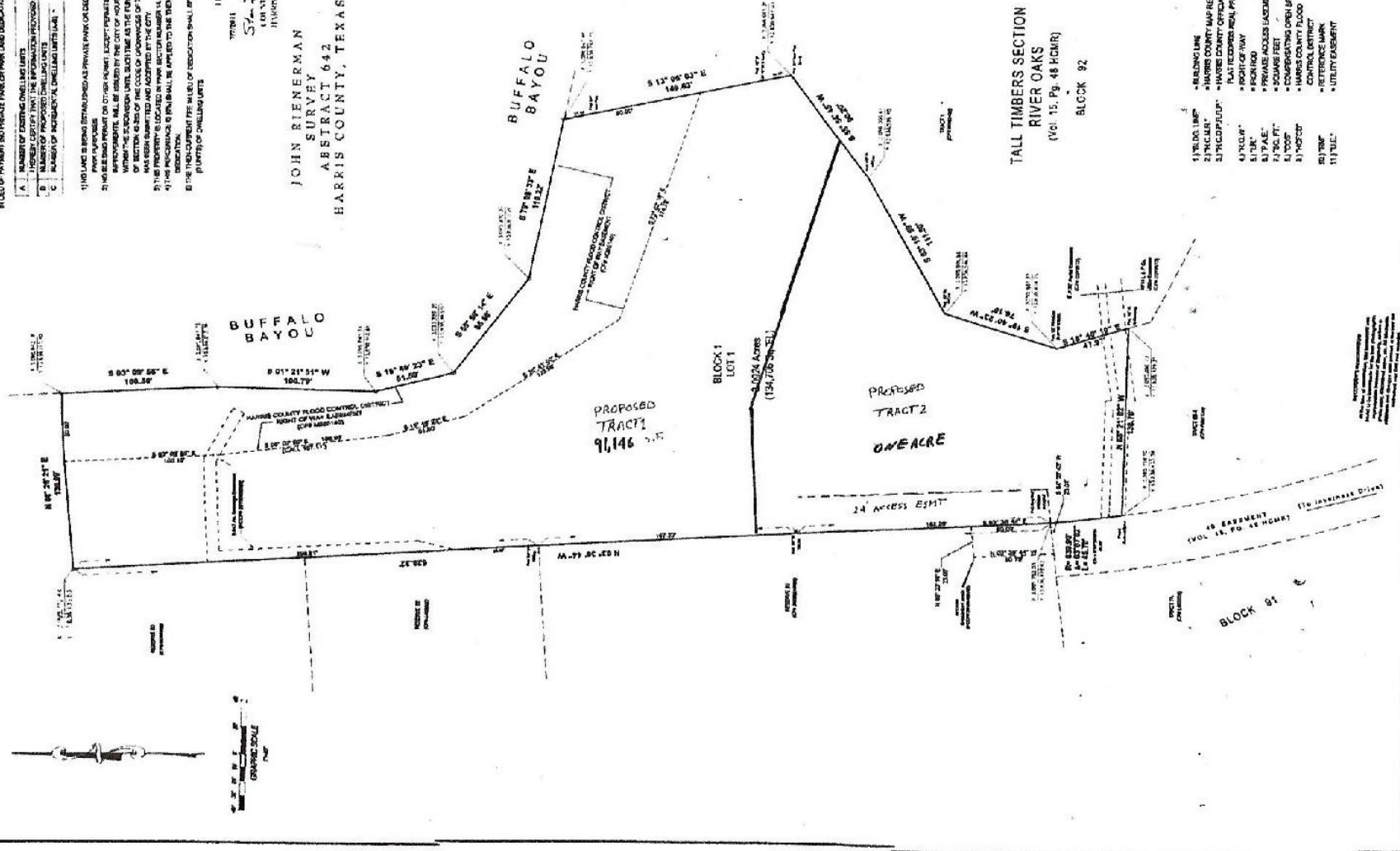
A	NUMBER OF EXISTING ONE-LANE LOTS	270
B	NUMBER OF EXISTING TWO-LANE LOTS <td>200</td>	200
C	NUMBER OF EXISTING FOUR-LANE LOTS <td>900</td>	900

- 1) THIS LAND IS BEING DEDICATED AS PRIVATE PARK OR DEDICATED TO THE PUBLIC FOR PARK PURPOSES.
- 2) NO USE SHALL BE MADE ON OTHER THAN THE EXISTING PURPOSES FOR CONSTRUCTION OF PUBLIC IMPROVEMENTS. ALL USES SHALL BE LIMITED TO THE CITY OF HOUSTON. LOCAL DEVELOPMENT OR CONSTRUCTION SHALL BE LIMITED TO THE CITY OF HOUSTON. LOCAL DEVELOPMENT OR CONSTRUCTION SHALL BE LIMITED TO THE CITY OF HOUSTON.
- 3) THE PROPERTY IS LOCATED IN PARK SECTION NUMBER 14.
- 4) THE PROPERTY IS LOCATED IN BLOCK NUMBER 92.
- 5) THE PROPERTY IS LOCATED IN TRACT NUMBER 1.
- 6) THE PROPERTY IS LOCATED IN TRACT NUMBER 1.
- 7) THE PROPERTY IS LOCATED IN TRACT NUMBER 1.

201102774

11/11/11 1:46 AM
 John Rienerman
 10000 ALLEN
 HOUSTON, TEXAS 77036

JOHN RIENERMAN
 SURVEY
 ABSTRACT 642
 HARRIS COUNTY, TEXAS



- 1) "THIS LINE"
- 2) "THIS LINE"
- 3) "THIS LINE"
- 4) "THIS LINE"
- 5) "THIS LINE"
- 6) "THIS LINE"
- 7) "THIS LINE"
- 8) "THIS LINE"
- 9) "THIS LINE"
- 10) "THIS LINE"
- 11) "THIS LINE"
- 12) "THIS LINE"
- 13) "THIS LINE"
- 14) "THIS LINE"
- 15) "THIS LINE"
- 16) "THIS LINE"
- 17) "THIS LINE"
- 18) "THIS LINE"
- 19) "THIS LINE"
- 20) "THIS LINE"
- 21) "THIS LINE"
- 22) "THIS LINE"
- 23) "THIS LINE"
- 24) "THIS LINE"
- 25) "THIS LINE"
- 26) "THIS LINE"
- 27) "THIS LINE"
- 28) "THIS LINE"
- 29) "THIS LINE"
- 30) "THIS LINE"
- 31) "THIS LINE"
- 32) "THIS LINE"
- 33) "THIS LINE"
- 34) "THIS LINE"
- 35) "THIS LINE"
- 36) "THIS LINE"
- 37) "THIS LINE"
- 38) "THIS LINE"
- 39) "THIS LINE"
- 40) "THIS LINE"
- 41) "THIS LINE"
- 42) "THIS LINE"
- 43) "THIS LINE"
- 44) "THIS LINE"
- 45) "THIS LINE"
- 46) "THIS LINE"
- 47) "THIS LINE"
- 48) "THIS LINE"
- 49) "THIS LINE"
- 50) "THIS LINE"
- 51) "THIS LINE"
- 52) "THIS LINE"
- 53) "THIS LINE"
- 54) "THIS LINE"
- 55) "THIS LINE"
- 56) "THIS LINE"
- 57) "THIS LINE"
- 58) "THIS LINE"
- 59) "THIS LINE"
- 60) "THIS LINE"
- 61) "THIS LINE"
- 62) "THIS LINE"
- 63) "THIS LINE"
- 64) "THIS LINE"
- 65) "THIS LINE"
- 66) "THIS LINE"
- 67) "THIS LINE"
- 68) "THIS LINE"
- 69) "THIS LINE"
- 70) "THIS LINE"
- 71) "THIS LINE"
- 72) "THIS LINE"
- 73) "THIS LINE"
- 74) "THIS LINE"
- 75) "THIS LINE"
- 76) "THIS LINE"
- 77) "THIS LINE"
- 78) "THIS LINE"
- 79) "THIS LINE"
- 80) "THIS LINE"
- 81) "THIS LINE"
- 82) "THIS LINE"
- 83) "THIS LINE"
- 84) "THIS LINE"
- 85) "THIS LINE"
- 86) "THIS LINE"
- 87) "THIS LINE"
- 88) "THIS LINE"
- 89) "THIS LINE"
- 90) "THIS LINE"
- 91) "THIS LINE"
- 92) "THIS LINE"
- 93) "THIS LINE"
- 94) "THIS LINE"
- 95) "THIS LINE"
- 96) "THIS LINE"
- 97) "THIS LINE"
- 98) "THIS LINE"
- 99) "THIS LINE"
- 100) "THIS LINE"

THIS SURVEY WAS MADE BY JOHN RIENERMAN, A LICENSED SURVEYOR IN THE STATE OF TEXAS, AND IS SUBJECT TO THE RULES AND REGULATIONS OF THE STATE BOARD OF SURVEYING ENGINEERS.