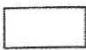


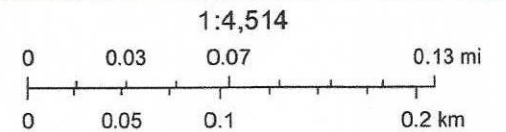
# Liberty CAD Web Map



10/22/2020, 11:11:31 AM

 Parcels

 Abstracts

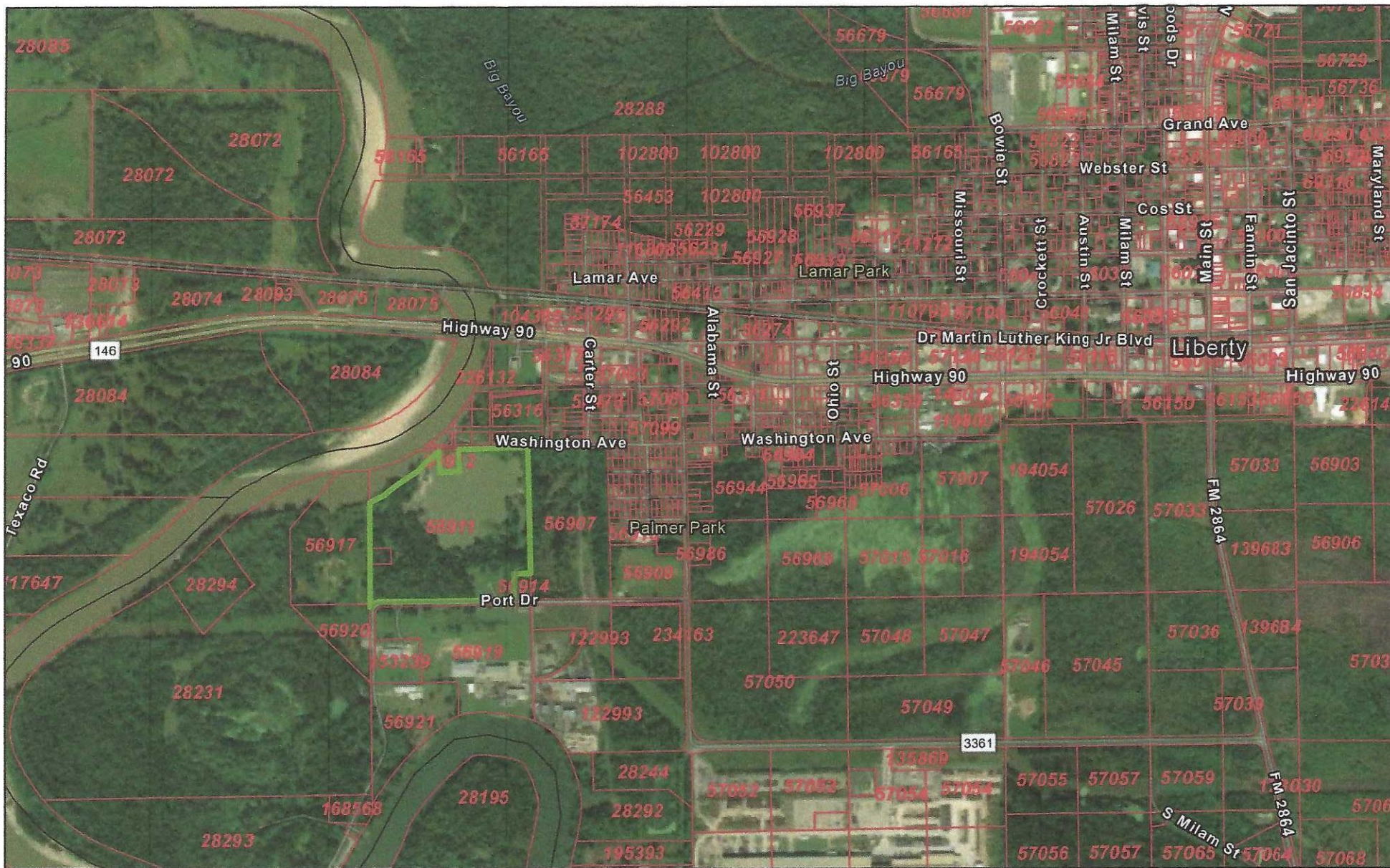


Source: Esri, Maxar, GeoEye, Earthstar Geographics, CNES/Airbus DS,

Liberty County Appraisal District, BIS Consulting - [www.bisconsulting.com](http://www.bisconsulting.com)

Disclaimer: This product is for informational purposes only and has not been prepared for or be suitable for legal, engineering, or surveying purposes. It does not represent an on-the-ground survey and represents only the approximate relative location of boundaries.

# Liberty CAD Web Map

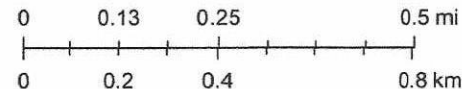


10/22/2020, 11:12:27 AM

 Parcels

 Abstracts

1:18,056

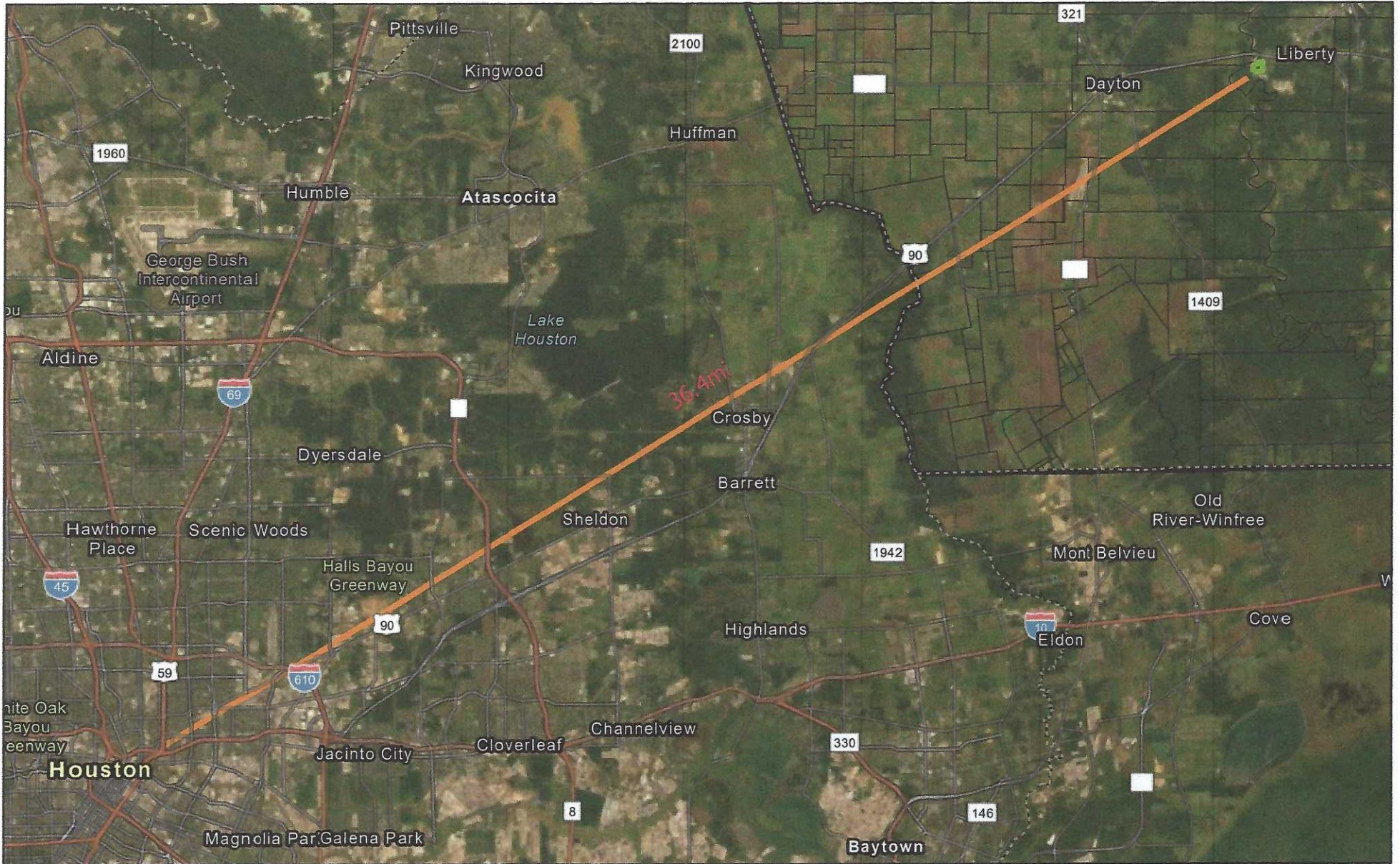


Source: Esri, Maxar, GeoEye, Earthstar Geographics, CNES/Airbus DS,

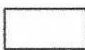
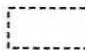

Liberty County Appraisal District, BIS Consulting - [www.bisconsulting.com](http://www.bisconsulting.com)

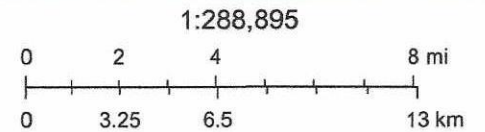
Disclaimer: This product is for informational purposes only and has not been prepared for or be suitable for legal, engineering, or surveying purposes. It does not represent an on-the-ground survey and represents only the approximate relative location of boundaries.

# Liberty CAD Web Map



10/22/2020, 11:25:44 AM

-  Abstracts
-  Texas County Boundaries
-  Liberty County Boundary



Source: Esri, Maxar, GeoEye, Earthstar Geographics, CNES/Airbus DS,

Liberty County Appraisal District, BIS Consulting - [www.bisconsulting.com](http://www.bisconsulting.com)

Disclaimer: This product is for informational purposes only and has not been prepared for or be suitable for legal, engineering, or surveying purposes. It does not represent an on-the-ground survey and represents only the approximate relative location of boundaries.