

#26

**HALF MOON**  
(50' PRIVATE R.O.W.)

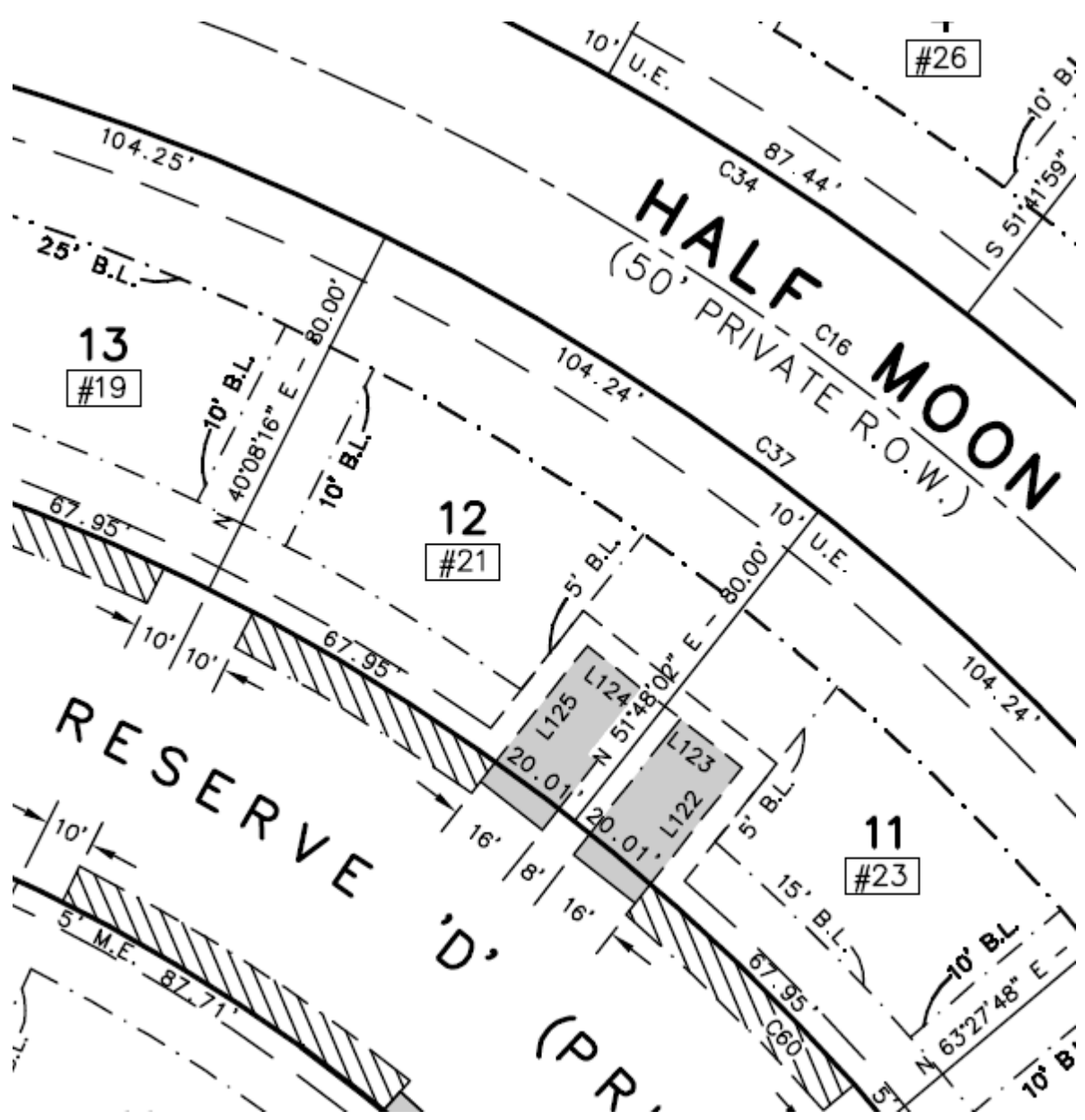
13  
#19

12  
#21

11  
#23

**RESERVE 'D'**  
(PR)

L125  
20.01'  
L124  
20.01'  
L123  
20.01'  
L122  
20.01'



10' U.E.

C34

87.44'

10' B.L.  
S 51°41'59"

104.25'

25' B.L.

10' B.L.  
N 40°08'16" E

10' B.L.  
80.00'

104.24'

c16

C37

10' U.E.

104.24'

67.95'

10' 10'

67.95'

5' B.L.

80.00'

10' U.E.

**RESERVE 'D'**

'D'

(PR)

L125  
20.01'

L124  
20.01'

N 51°48'02" E

L123  
20.01'

L122  
20.01'

5' B.L.

15' B.L.

67.95'

10' B.L.  
N 63°27'48" E

10' B.L.

10'

5' M.E.

87.71'

C60