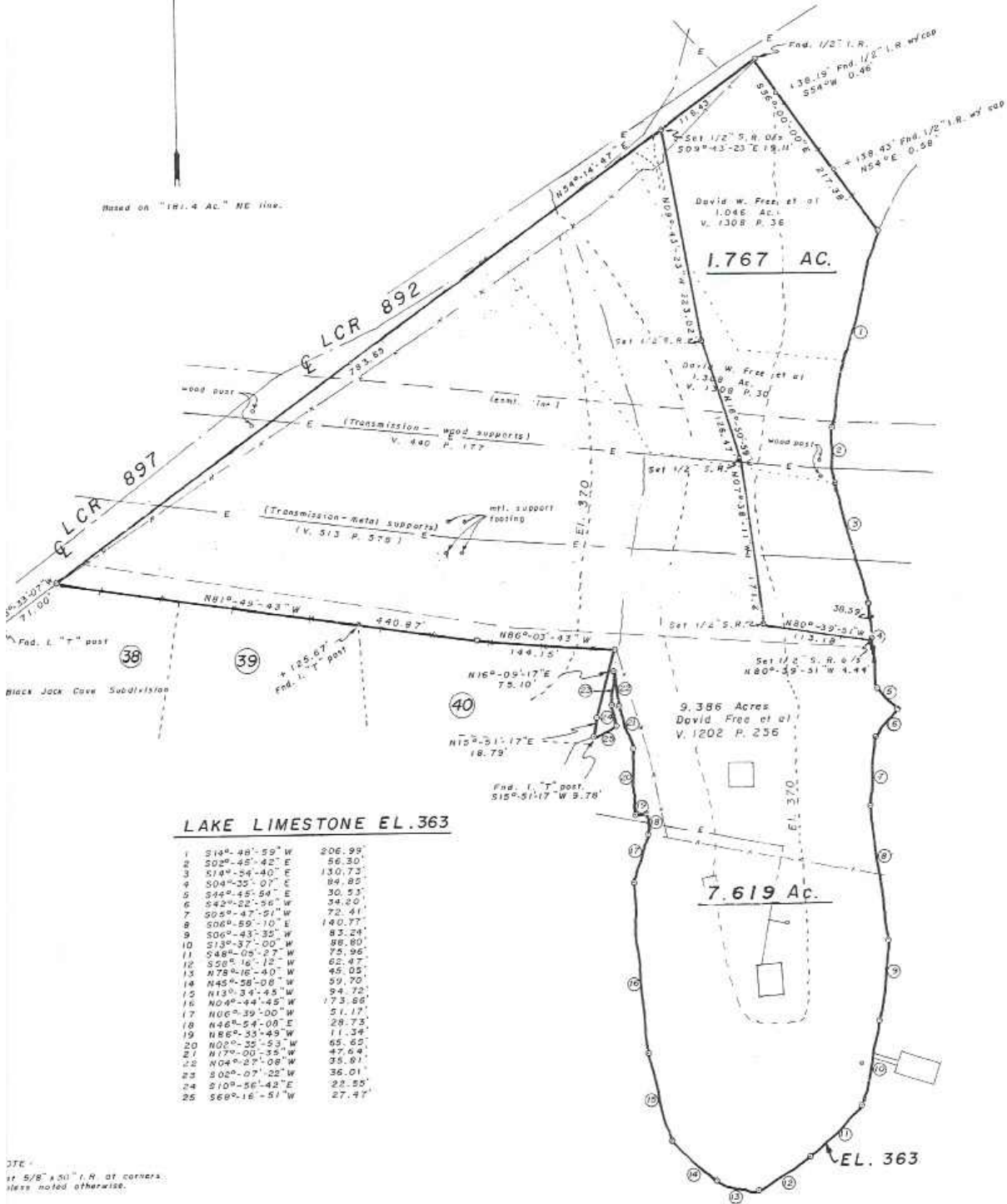


Based on "181.4 AC." NE 11sq.



LAKE LIMESTONE EL.363

1	S14°-48'-59" W	206.99'
2	S02°-45'-42" E	56.30'
3	S14°-54'-40" E	130.73'
4	S04°-35'-07" E	84.85'
5	S44°-45'-04" E	30.53'
6	S42°-22'-56" W	34.20'
7	S05°-47'-51" W	72.41'
8	S06°-59'-10" E	140.77'
9	S00°-43'-35" W	83.24'
10	S13°-37'-00" W	88.80'
11	S48°-05'-27" W	75.96'
12	S58°-16'-12" W	62.47'
13	N72°-16'-40" W	45.05'
14	N45°-58'-08" W	59.70'
15	N13°-34'-45" W	94.72'
16	N04°-44'-45" W	173.66'
17	N00°-39'-00" W	51.12'
18	N46°-54'-00" E	28.73'
19	N86°-33'-49" W	11.34'
20	N00°-25'-53" W	65.85'
21	N17°-00'-36" W	42.64'
22	N04°-27'-08" W	35.91'
23	S02°-07'-22" W	36.01'
24	S10°-56'-42" E	22.55'
25	S68°-16'-51" W	27.47'

37E -
if 5/8" x 3/4" I.R. at corners,
less noted otherwise.

LAKE LIMESTONE

"TN. NO. 05-162 - 181.4 Acres" Cause No. 2973-B

W. Free, Registered Professional Land Surveyor, State
do hereby affirm that the foregoing plat is a true
plan of a survey made by me.

Free

R.P.L.S. NO. 4010

**PARTITION
SURVEY PLAT OF 9.386 ACRES IN THE
M. C. REJON XI LEAGUES A-26
LIMESTONE COUNTY, TEXAS**

SCALE: 1"=100'

FREE & ASSOCIATES, P.C.
P.O. Box 317 (903) 536-2554

CENTERVILLE, TEXAS
75833

REV. AUG. 15, 2008
REV. SEPT. 22, 2006
DEC. 7, 1992

REV. JAN 17, 2014