

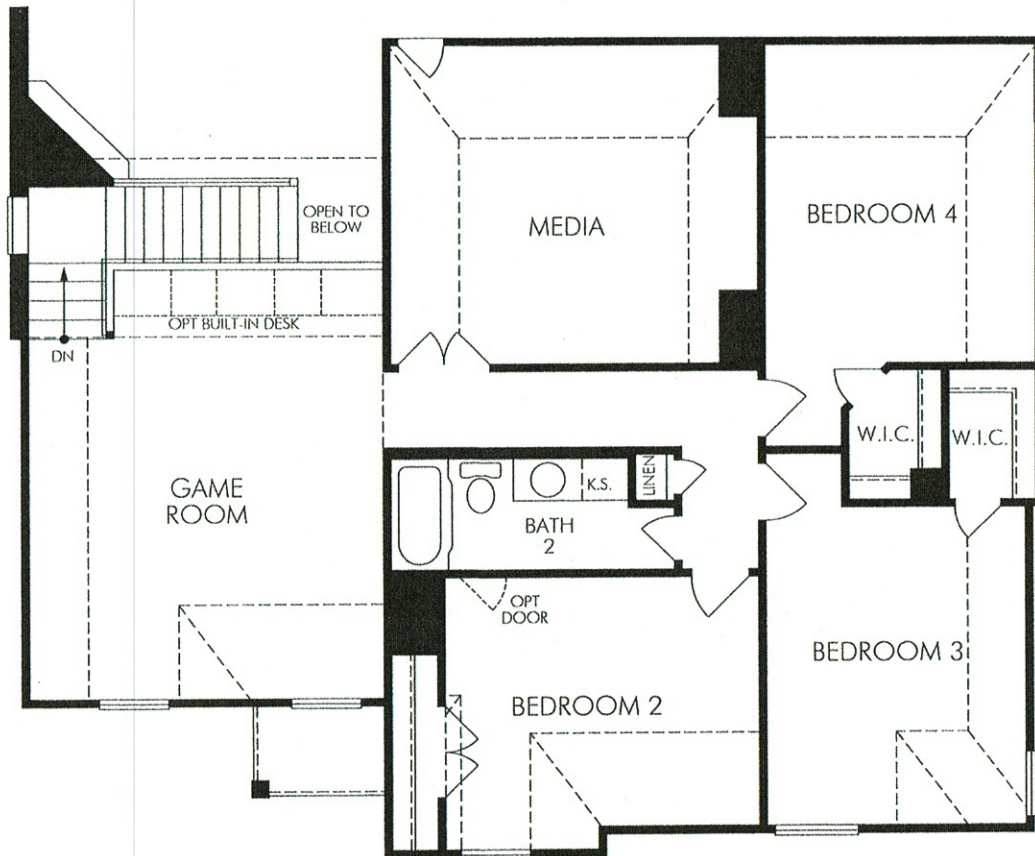
FIRST FLOOR

**THE WINDROSE • PLAN 5570**

2,926 sq ft. • Two Story • 4 Bedroom • 2.5 Bath • Dining • Family • Game Room • Media • 2 Car Garage

REV. 04/14  
5570A1C0U

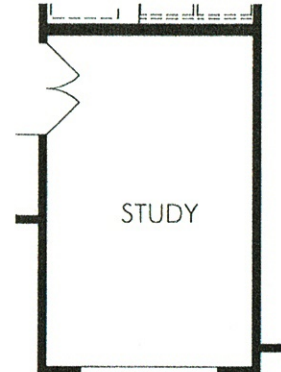




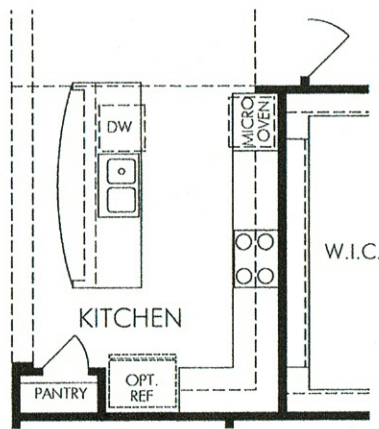
SECOND FLOOR PLAN



OPT. OUTDOOR LIVING  
2



OPT. STUDY



OPT. KITCHEN

## OPTIONS FOR THE WINDROSE • FIRST FLOOR

Options and other promotional materials are representative and may depend on certain options, upgrades, landscaping, and extra design features that are not included as part of the home and may not be available in all communities. Floor plans, elevations, options, home features, and equipment, when shown, are subject to change at any time without notice or obligation. Square footages and dimensions are approximate and may vary in construction and depending on the standard of measurement used, engineering and architectural requirements, or other site-specific conditions. All area square footages are shown as "A" elevation with exceptions and may be greater or less than the base square footage based on the elevation. All elevations and floor plans are an artist's conceptual drawings and may vary from the actual plans and homes as built, including without limitation, window sizes and other architectural features and changes required by governmental authority or its accommodate options or value engineering. Further readings may not be drawn to scale and homes may be constructed with a floor plan that is the result of the marketing plan. All drawings and other promotional materials are subject to the rights of Mortgage Lenders and may be used in whole or in part without its prior written consent. Not a sale or offer of a real estate property. Offers to sell real property may only be made and accepted at the sales office for the Windrose Mortgage Lenders. See sales office for details. Mortgage Lenders is a registered trademark of Mortgage Lenders Corporation. © 2015 Mortgage Lenders Corporation. All rights reserved.