

Talavera Legacy Collection

Interior

- Emser Tile® Ceramic Tile in Foyer, Bathrooms, Kitchen, and Laundry Room
- Shaw® Carpet with 5.5-pound Carpet Pad
- Rounded Drywall Corners with Textured Walls and Ceilings
- Sherwin-Williams® Interior Paint
- Rocker Light Switches
- Ceiling Fans w/ 4-Light Kit in Gathering Room, Owner's Suite, and Game Room (Per Plan)
- All Secondary Bedrooms Blocked and Prewired for Ceiling Fans
- Kichler® Nickel Light Fixture Package
- Fluorescent Lighting in Laundry Room and Owner's Closet
- Raised 6-Panel Interior Doors
- Privacy Locks on Owner's Suite and all Bathroom Doors
- Schlage® Satin Nickel Interior Door Hardware
- 9-foot Ceiling Heights
- 3 1/4" Colonial Baseboards and Door Casing
- Wood Closet Rods and Shelving
- Staircases Include Wood Spindles with Stained Oak Handrail (Per Plan)
- Life Tested® Everyday Entry™
- Life Tested® Pulte Planning Center® (Per Plan)

Kitchen

- Timberlake Cabinetry® Birch Flat Panel Cabinets with 36" Uppers and Crown Molding
- Whirlpool® Black Appliance Package – Features Free Standing Gas Range, Microwave/Range Hood Combination Vented to the Exterior, and EnergyStar® Certified Dishwasher
- 3 CM Granite Countertops in Kitchen and Pulte Planning Center® (Per Plan)
- Kichler® LED Low-Profile Down Lights
- InSinkErator® Garbage Disposal
- Amerisink® Stainless Steel Double-Equal Undermount Kitchen Sink
- Moen® Chrome Single Handle Pull-Out Kitchen Faucet

Bathrooms

- Timberlake Cabinetry® Birch Flat Panel Cabinets
- Comfort Height Double Vanity in Owner's Bathroom
- Comfort Height Vanity in Secondary Bathrooms
- Cultured Marble Vanity Countertops with Integral Sinks in Owner's and Secondary Bathrooms
- Moen® Chrome Plumbing Fixtures and Bathroom Accessories
- Gerber® Comfort Height Elongated Toilets in all Bathrooms
- Glass Enclosed Shower and Garden Tub with Deck-Mounted Faucets in Owner's Bathroom
- Emser Tile® Ceramic Tile Shower Surround in Owner's Bathroom
- Gerber® White Pedestal Sink in Powder Room (Per Plan)

Exterior

- Acme Brick® American Made Clay Brick on 3 Sides of Home (100-Year Guarantee)
- LP® SmartSide® Siding and Trim with 50-Year Manufacturer Warranty
- Water-Resistant Barrier Thermo-Ply® Protective Sheathing
- Sherwin-Williams® Exterior Paint
- Vinyl Divided Light Windows on Front of Home with Half-Screens on all Operable Windows
- 6'8" Therma-Tru® Insulated Textured 6-Panel Front Door
- Schlage® Single Cylinder Handleset with Deadbolt Lock
- Full Light Door at Rear Entry
- Professional Landscape Package in Front Yard
- Two Coach Lights on Garage
- Gutters and Downspouts on Front of Home



Prices subject to change without notice. All square footage is approximate. Pulte Homes® reserves the right to revise specifications and dimensions without notice. Flooring, appliances, room sizes, windows, roofs, ceilings and exteriors may vary. Pulte Homes® is a brand of Pulte Homes, Inc. All offers subject to availability. And where prohibited. 5/3/18



Exterior (cont'd)

- Windsor® Embossed Steel Carriage Garage Door
- LiftMaster® ½ HP Garage Door Opener with 2 Remotes
- 16' Wide 2-Car Driveway with 3' Wide Walkway from Porch to Street
- Two Hose Bibbs on Exterior of Home
- Full Yard Sod Included
- Front and Side Yard Irrigation System Included
- Cast Stone Address Blocks
- Covered Rear Patio Blocked and Wired for Ceiling Fan (varies per plan)
- Broom Finish Front Porches
- Asphalt 30-Year Architectural Shingles
- 6-foot Privacy Fence with Gate

Energy

- Lennox® 16 SEER High Efficiency HVAC System with Environmentally Friendly 410A Refrigerant and R6 Rated Duct System
- Insulation Package Includes:
 - R-13 Batt Insulation Installed in wall with Zero Tolerance Application
 - R-22 Fiberglass Insulation in Sloped Ceilings
 - R-30 Fiberglass Insulation in Attic
- High Efficiency Insulated Low-E 366 Vinyl Glass Windows
- Energy Efficient Gas Water Heater
- Radiant Barrier Roof Decking
- Programmable Honeywell™ Thermostat
- Electric Dryer Hookups with Outside Vent
- Roof Vents for Added Ventilation

Design Center

- Personal appointment with a Professional Decorating Consultant at the Design Center

Protection Plan

- Cable and Rebar Slab per Engineered Drawing with 3000 PSI Concrete
- Borate Treatment on all Exterior Walls and Slab Penetrations with Taexx® Tubes in the Wall® Built-In Pest Control System in First-Floor Exterior Walls and Plumbing Walls
- Professionally Engineered frame designs
- GFCI Receptacles Located on Home Exterior and in Garage
- Professionally conducted Third Party Inspections at Foundation, Frame, HVAC Duct, and Final Stages
- 1 Year Limited Warranty
- 2 Year Mechanical Warranty
- 5 Year Water Intrusion Warranty
- 10 Year Structural Warranty
- Builder Serviced Warranty

Smart Home Features

- Cat 6/RG-6 Combo Media Outlet in Gathering Room (Location per plan)
- Cat 6 Wiring to future Wireless Access Point (Location per plan)
- App-Enabled, WiFi Compatible Garage Door Opener
- 30" x 16" Plastic Structured Wiring Enclosure (Location per plan)
- 1" Flexible Conduit Run from Structured Wiring Enclosure to Exterior of Home for future ISP Connection
- Design Center appointment with Low Voltage Technician to Discuss optional Smart Home Technology



Prices subject to change without notice. All square footages are approximate. Pulte Homes reserves the right to revise specifications and dimensions without notice. Flooring, appliances, room sizes, windows, roofs, ceilings and exteriors may vary. Pulte Homes is a brand of Pulte Homes, Inc. All offers subject to availability. Void where prohibited. 5/3/16





TALAVERA

24807 Twilight Hollow Lane, Richmond, TX 77406

877-751-0976

Fox Hollow Floor Plan

3-4 Bedrooms ♦ 2 Bathrooms ♦ 2 Car Garage

Exterior B



For this application, the company does not warrant or assume any legal liability or responsibility for the accuracy, completeness, or usefulness of any information, apparatus, product, or process disclosed. Base floor plan subject to change based on elevation selected.



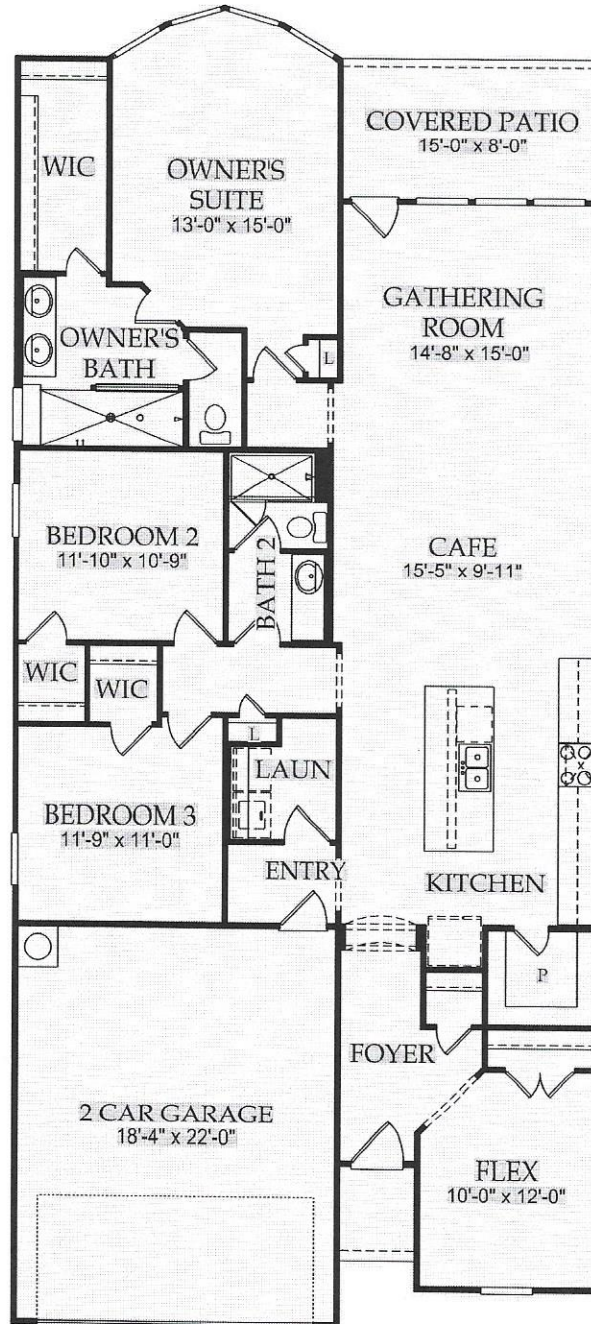
TALAVERA

24807 Twilight Hollow Lane, Richmond, TX 77406
877-751-0976

Fox Hollow Floor Plan

3-4 Bedrooms • 2 Bathrooms • 2 Car Garage

Floor 1



Selected Options: Shower at Bath 2, Shower at Owner's Bath, Bay Window at Owner's Suite

Options not selected include : Service Door at Garage, Double Vanity at Bath 2, Extended Covered Patio, Drop Zone at Entry, Mud Bench at Entry, Bedroom 4, Study, Tray Ceiling at Foyer, Fireplace at Gathering Room, Tray Ceiling at Gathering Room, Raised Countertop at Kitchen, Door at Owner's Suite, Tray Ceiling at Owner's Suite

For this application, the company does not warrant or assume any legal liability or responsibility for the accuracy, completeness, or usefulness of any information, apparatus, product, or process disclosed. Base floor plan subject to change based on elevation selected.



10-Year Limited Structural Warranty

We won't just build you a new home. We'll also stand behind it.

Pulte homes are built for life and the way you live it. Peace of mind comes from the thoughtful Life Tested® design, quality craftsmanship, and a warranty you can rely on.

WARRANTY HIGHLIGHTS

10 year coverage on structural elements of the home

5 year coverage on various types of water infiltration and internal leaks

2 year coverage on the workability of plumbing, electrical, HVAC, and other mechanical systems

1 year coverage on materials and workmanship

 Warranty is transferable

WARRANTY

Warranties are transferable to subsequent owner who takes title within the applicable warranty period. Information above is intended only to highlight certain aspects of the warranty. Terms, conditions, exclusions, and limitations apply. Warranty is based on Performance Standards criteria that are set forth in the full warranty. A complete description of warranty terms, conditions, exclusions, and limitations is available at <http://www.pulte.com>. 10-year structural warranty covers: footings, bearing walls, beams, girders, trusses, rafters, bearing columns, lintels, posts, structural fasteners, subfloors, and roof sheathing. The warranty description set forth above does not describe or apply to homes in California or New Jersey. The photograph depicts a model containing features or designs that may not be available on all homes. This material shall not constitute a valid offer in any state where prior registration is required or if void by law. Life Tested® is a registered trademark of PN II, Inc. © 2017 Pulte Home Company, LLC. All rights reserved. 4/2017

