

18.765 ACRES
ANNIE ELIZABETH NEUMEYER
VOL. 164, PG. 12
P.R.L.C.T.X

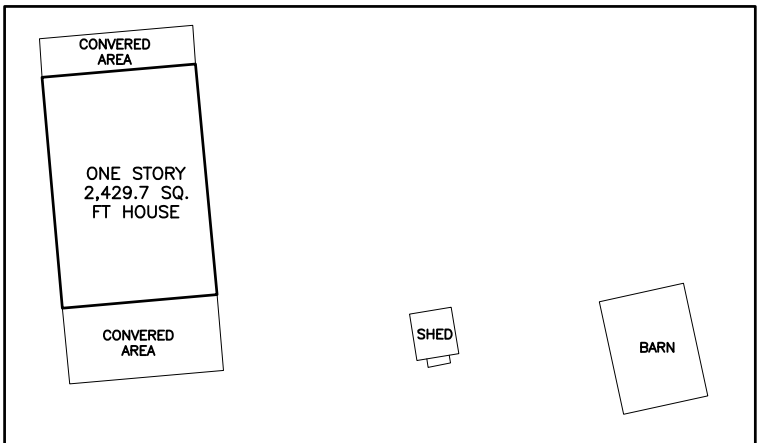
18.777 ACRES
LARRY & BEVERLY CHARLES
VOL. 353, PG. 602
O.R.L.C.T.X

LINE	BEARING	DISTANCE
L1	S 89°20'39" E	115.85'
L2	N 87°24'38" E	119.31'
L3	N 83°34'45" E	119.28'
L4	N 80°38'09" E	119.26'

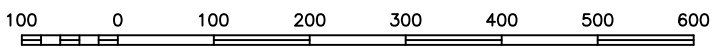
N 17°26'03" N
2096.59'

18.79 ACRE TRACT

S 14°26'54" E
1936.70'



DETAIL: NOT TO SCALE



SCALE: 1" = 200 FEET

I HEREBY STATE THAT THIS PLAT SHOWS THE SUBJECT LOCATION AS SURVEYED ON THE GROUND 1/24/18. THIS PLAT IS TRUE AND CORRECT TO THE BEST OF MY KNOWLEDGE.

COLE E. BARTON
REGISTERED PROFESSIONAL LAND SURVEYOR
LICENSE NO. 6368



2321 TROPICAL WIND DRIVE, CORPUS CHRISTI, TX 78414 | (361) 208-4284
TEXAS LICENSED SURVEYING FIRM 10194009
THE INTERSECTION OF QUALITY AND EFFICIENCY

18.79 ACRE TRACT

BEING THE SAME TRACT CONVEYED FROM CAROL J. BERGER AND ELAINE L. KULHANEK TO DONALD EHLEK BY GENERAL WARRANTY DEED DATED SEPTEMBER 15, 2015 AND RECORDED IN VOLUME 698, PAGE 471 OFFICIAL RECORDS OF LAVACA COUNTY, TEXAS, ALSO COMPRISED OF A PORTION OF THE G.W. & W.H. SCOTT LEAGUE, ABSTRACT 45

Completion Date: 1/25/18	File Name: BOUNDARY.DWG
Scale: 1"=200'	Surveyed by: ST/LB
Drawn by: AF	Checked by: CB

JOB #: 1801027