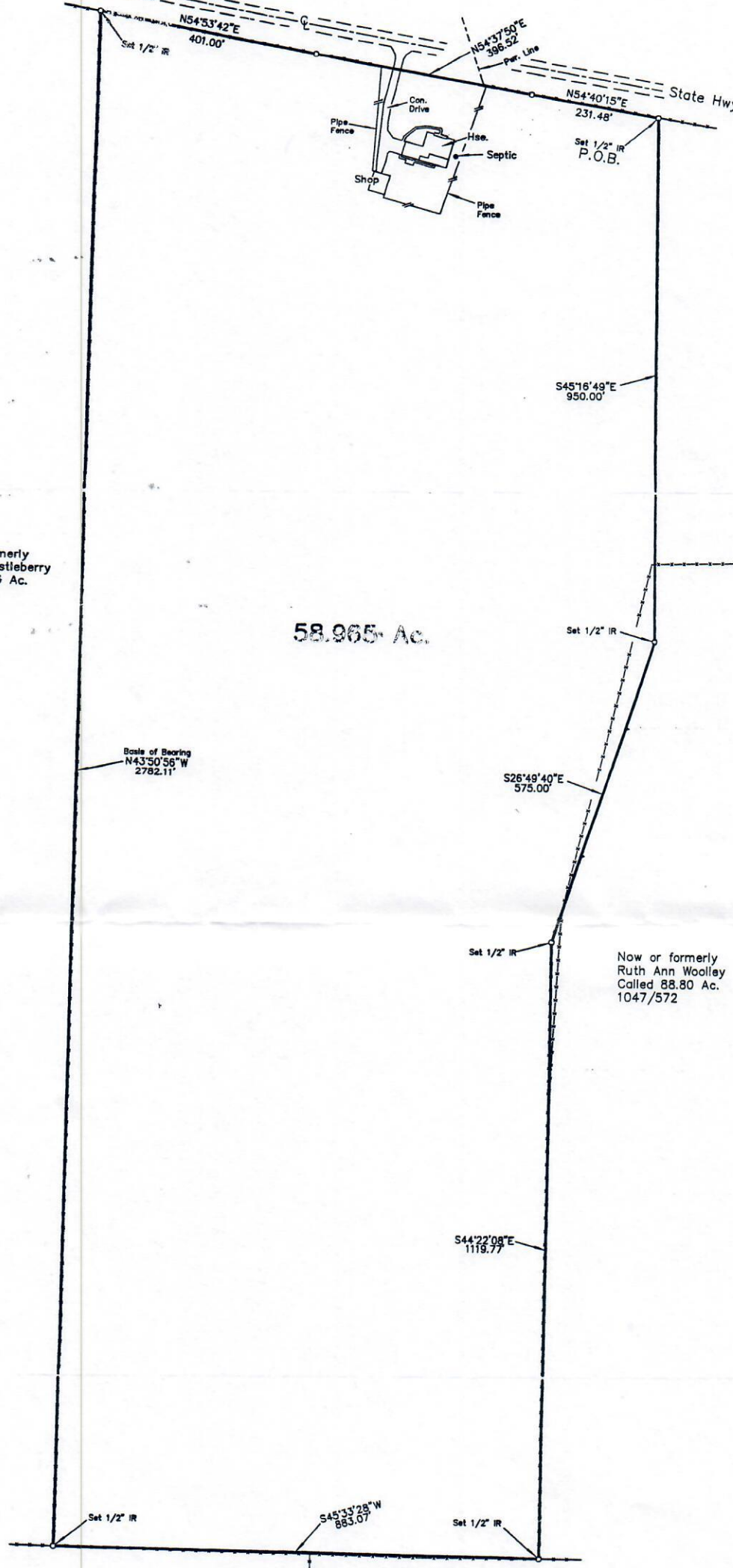


State Hwy 21

State Hwy 21



Now or Formerly
David G. Castleberry
Called 44.56 Ac.
1127/815

58.965 Ac.

Base of Bearing
N43°30'56"W
2782.11'

S26°49'40"E
575.00'

S45°16'49"E
950.00'

Set 1/2" IR

Set 1/2" IR

Now or formerly
Ruth Ann Woolley
Called 88.80 Ac.
1047/572

S44°22'09"E
1119.77'

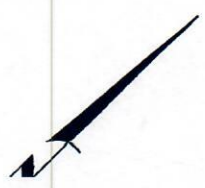
Set 1/2" IR

S45°13'28"W
863.07'

Set 1/2" IR

Now or Formerly
Larry V. & Myrtle Minter
Called 82.00 Ac.
Doc. 1100607

Now or Formerly
Ruth Ann Woolley
Called 60.00 Ac.
1047/572



Handwritten signature
P. Woolley
109

