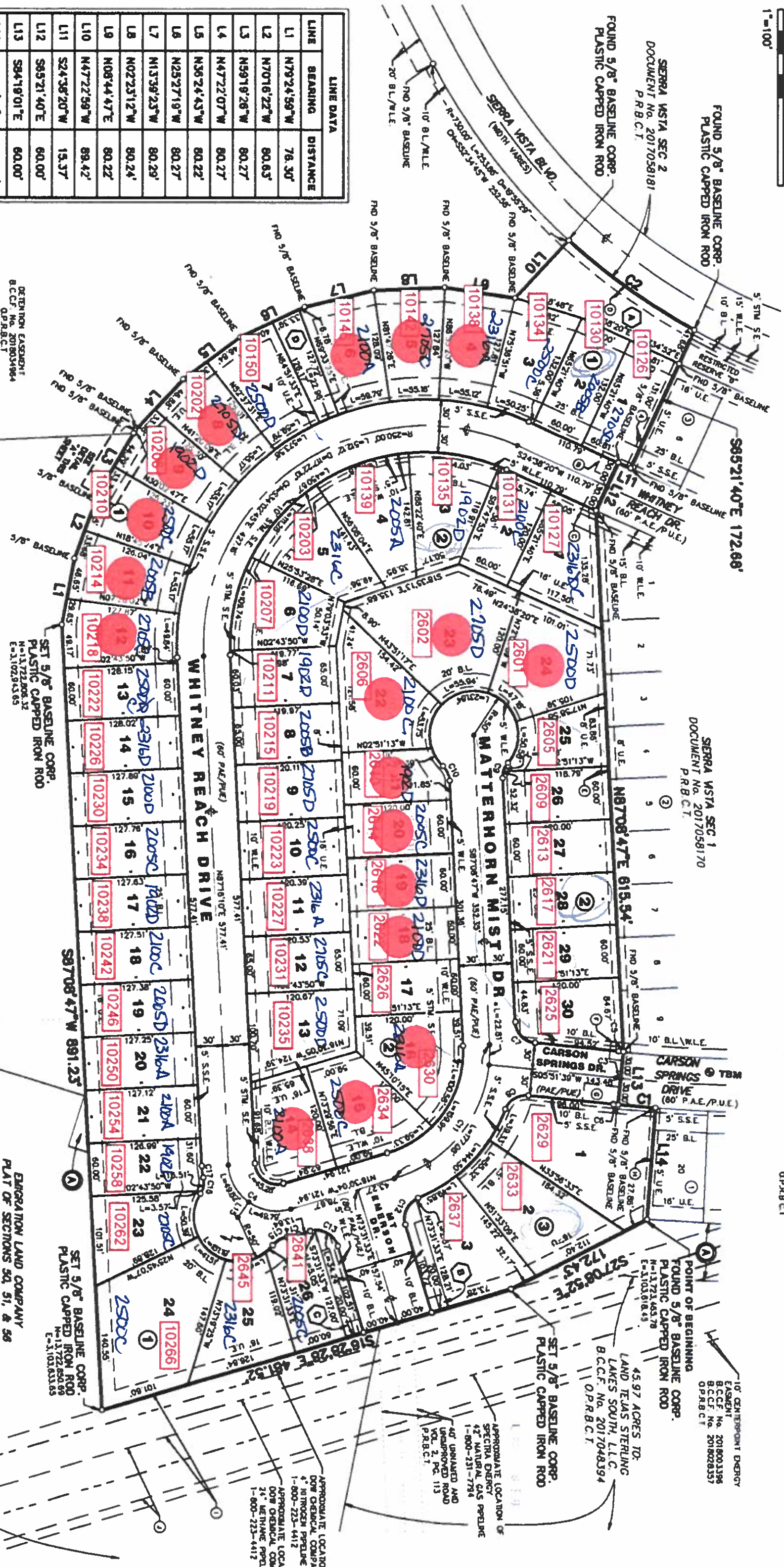


STATION 63.111 ON THE 5/8\"/>

UPPER LEFT  
VAL. 1024, PG. 97  
OR.B.C.T.  
60' BRAZORIA INTERCONNECTOR GAS  
PIPELINE LLC PRELIM EASDGMT  
B.C.C.F. No. 2007042143  
O.P.R.B.C.T.

LINE	BEARING	DISTANCE
L1	N79°24'59"W	76.30'
L2	N70°16'22"W	80.63'
L3	N69°19'26"W	80.27'
L4	N47°22'07"W	80.27'
L5	N36°24'43"W	80.22'
L6	N25°27'19"W	80.27'
L7	N13°39'23"W	80.29'
L8	N02°23'12"W	80.24'
L9	N08°44'47"E	80.22'
L10	N47°22'59"W	89.42'
L11	S24°38'20"W	15.37'
L12	S85°21'40"E	60.00'
L13	S84°19'01"E	60.00'
L14	S85°39'31"E	127.00'
L15	S94°37'56"E	21.18'

RESTRICTED RESERVE "A"  
BLOCK 7  
SIERRA WSTA, SEC. 2  
DOCUMENT NO. 2017058181  
O.P.R.B.C.T.



DETENTION EASEMENT  
B.C.C.F. No. 2018034964  
O.P.R.B.C.T.

108.402 ACRES TO:  
LAND TEJAS STERLING LAKES SOUTH, L.L.C.  
B.C.C.F. No. 2016056950  
O.P.R.B.C.T.

ERIGATOR LAND COMPANY  
PLAT OF SECTIONS 50, 51, & 56  
N.T.A.B. AND OF 2, 3, & 4 L&M  
VOL. 2, PG. 113  
P.R.B.C.T.

39.66 ACRES TO:  
LAND TEJAS STERLING  
LAKES SOUTH, L.L.C.  
B.C.C.F. No. 2017063957  
O.P.R.B.C.T.

APPROXIMATE LOCATIONS  
DOW CHEMICAL COMPANY  
4<sup>th</sup> NITROGEN PRELIM  
1-800-223-4412  
APPROXIMATE LOCATIONS  
DOW CHEMICAL COMPANY  
2<sup>nd</sup> METHANE PERM  
1-800-223-4412

APPROXIMATE LOCATION OF  
SPECTRA ENERGY  
42<sup>nd</sup> NATURAL GAS PRELIM  
1-800-231-7794  
40<sup>th</sup> UNPAVED AND  
UNAPPROVED ROAD  
VOL. 2, PG. 113  
O.P.R.B.C.T.

45.97 ACRES TO:  
LAND TEJAS STERLING  
LAKES SOUTH, L.L.C.  
B.C.C.F. No. 2017048394  
O.P.R.B.C.T.

10' CENTERPOINT ENERGY  
EASEMENT  
B.C.C.F. No. 2018003396  
B.C.C.F. No. 2018028357  
O.P.R.B.C.T.