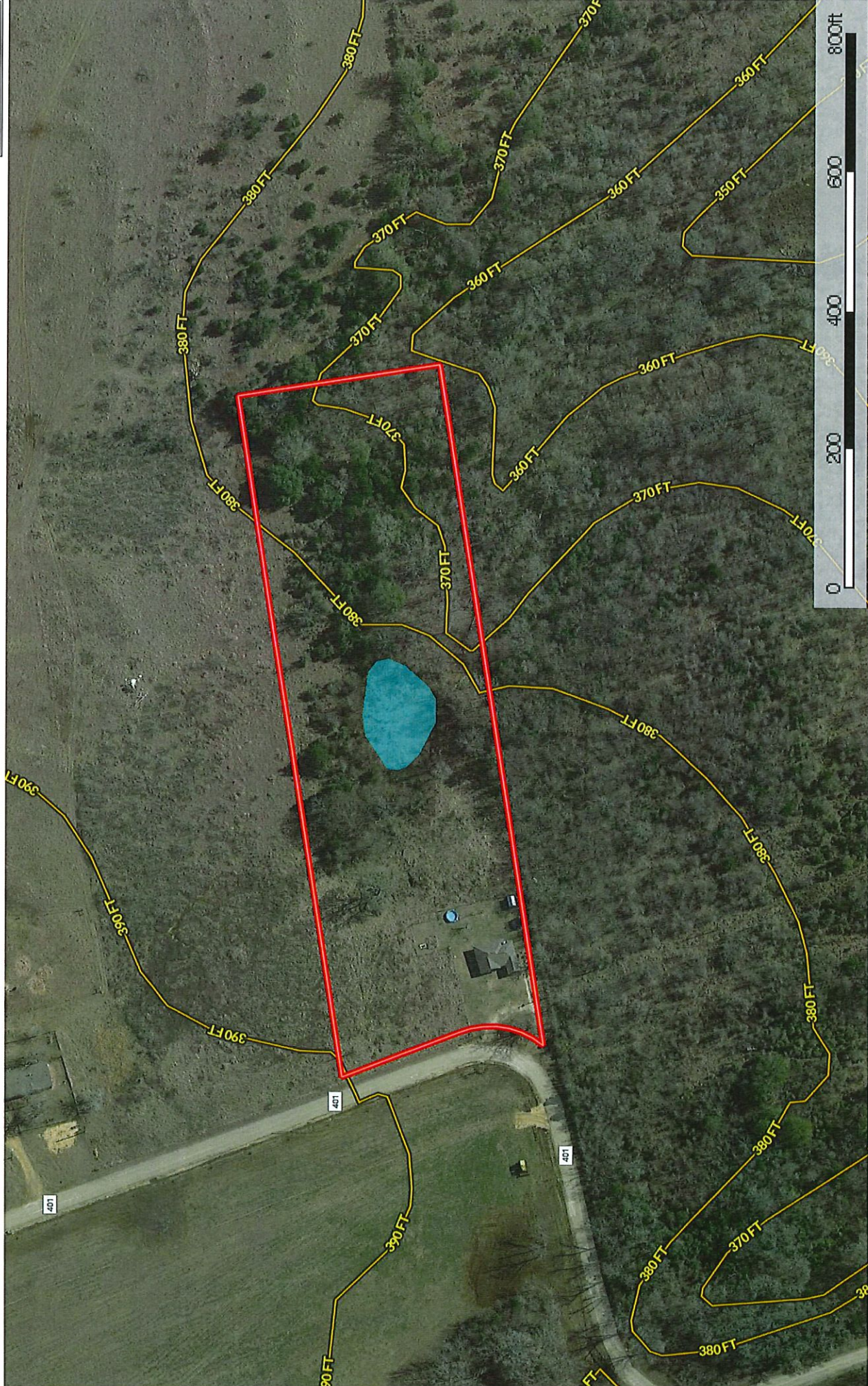


3290 FM 401, Lexington
Texas, AC +/-



- Boundary
- Stream, Intermittent
- River/Creek
- Water Body

Lindi Camaron Team
P: 9794514645

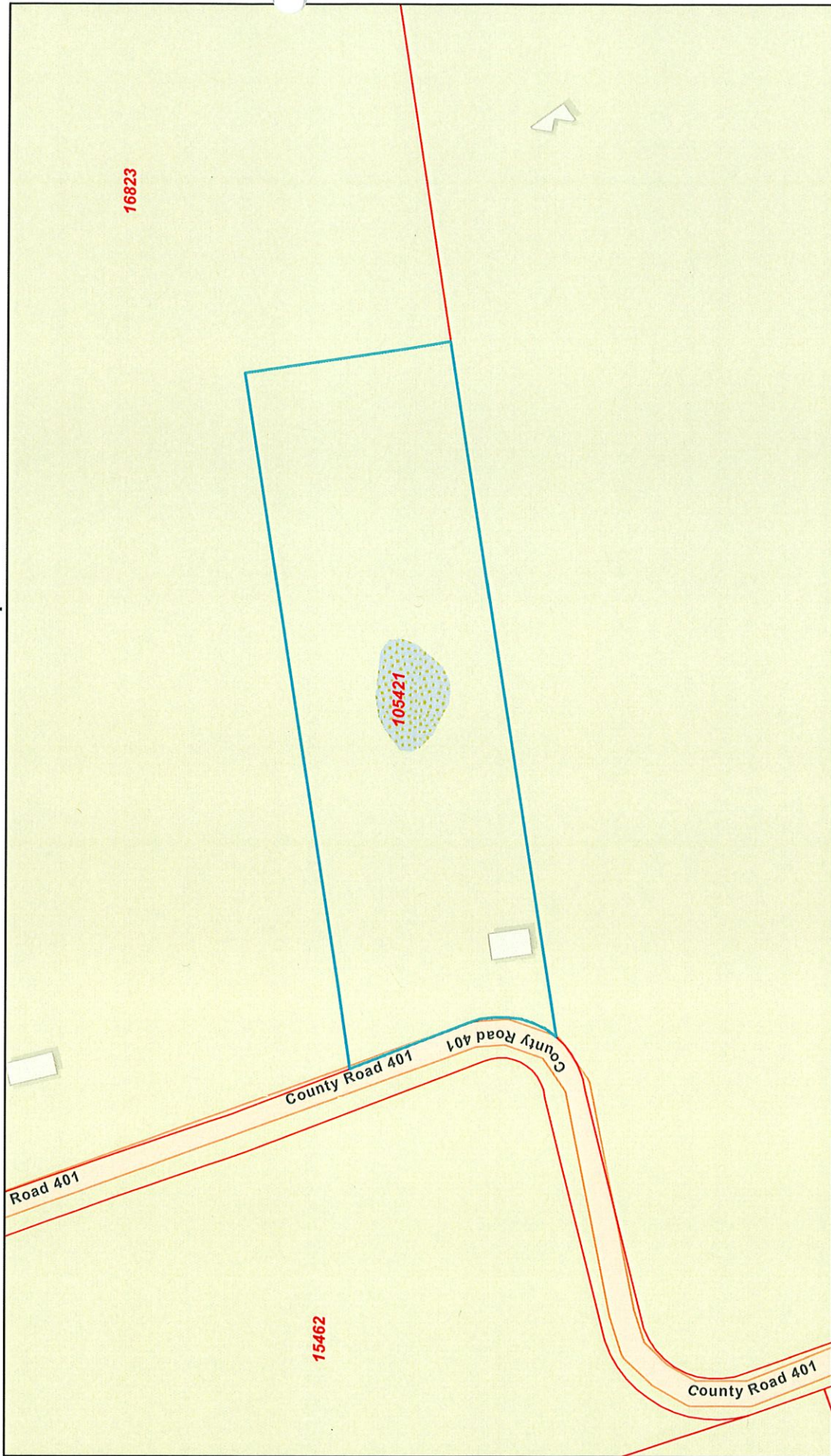
<http://lindicamaronteam.buybrenham.com/>

601 Medical Court



The information contained herein was obtained from sources deemed to be reliable. MapRight Services makes no warranties or guarantees as to the completeness or accuracy thereof.

Lee CAD Web Map



12/14/2020, 2:28:45 PM

▭ Parcels

▭ Abstracts

1:2,257

0 0.01 0.03 0.06 mi

0 0.03 0.05 0.1 km

Esri Community Maps Contributors, Texas Parks & Wildlife, BuildingFootprintUSA, Esri, HERE, Garmin, SafeGraph, INCREMENT P, METI/ NASA, USGS, EPA, NPS, US Census Bureau, USDA

Lee County Appraisal District, BIS Consulting - www.bisconsulting.com
Disclaimer: This product is for informational purposes only and has not been prepared for or be suitable for legal, engineering, or surveying purposes. It does not represent an on-the-ground survey and represents only the approximate relative location of boundaries.