

# Floor Plan

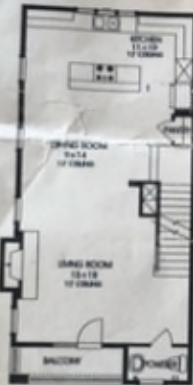
Timbergrove FD Heights

2,012 sq. ft.

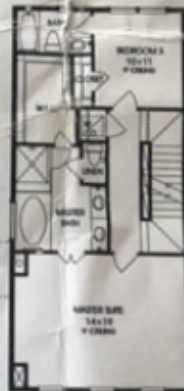
3 bed / 3.5 bath



First Floor  
323 sq.ft.



Second Floor  
811 sq.ft.



Third Floor  
360 sq.ft.



Fourth Floor  
18 sq.ft.

[intown-homes.com](http://intown-homes.com)

All plans, features and prices are subject to change without notice. Square footage is approximate. No representation or warranty other than as indicated or implied are made as to the accuracy of the information hereon with respect to the suitability, usability, merchantability or conditions of any property herein described. All rights reserved. InTown Homes 2012

