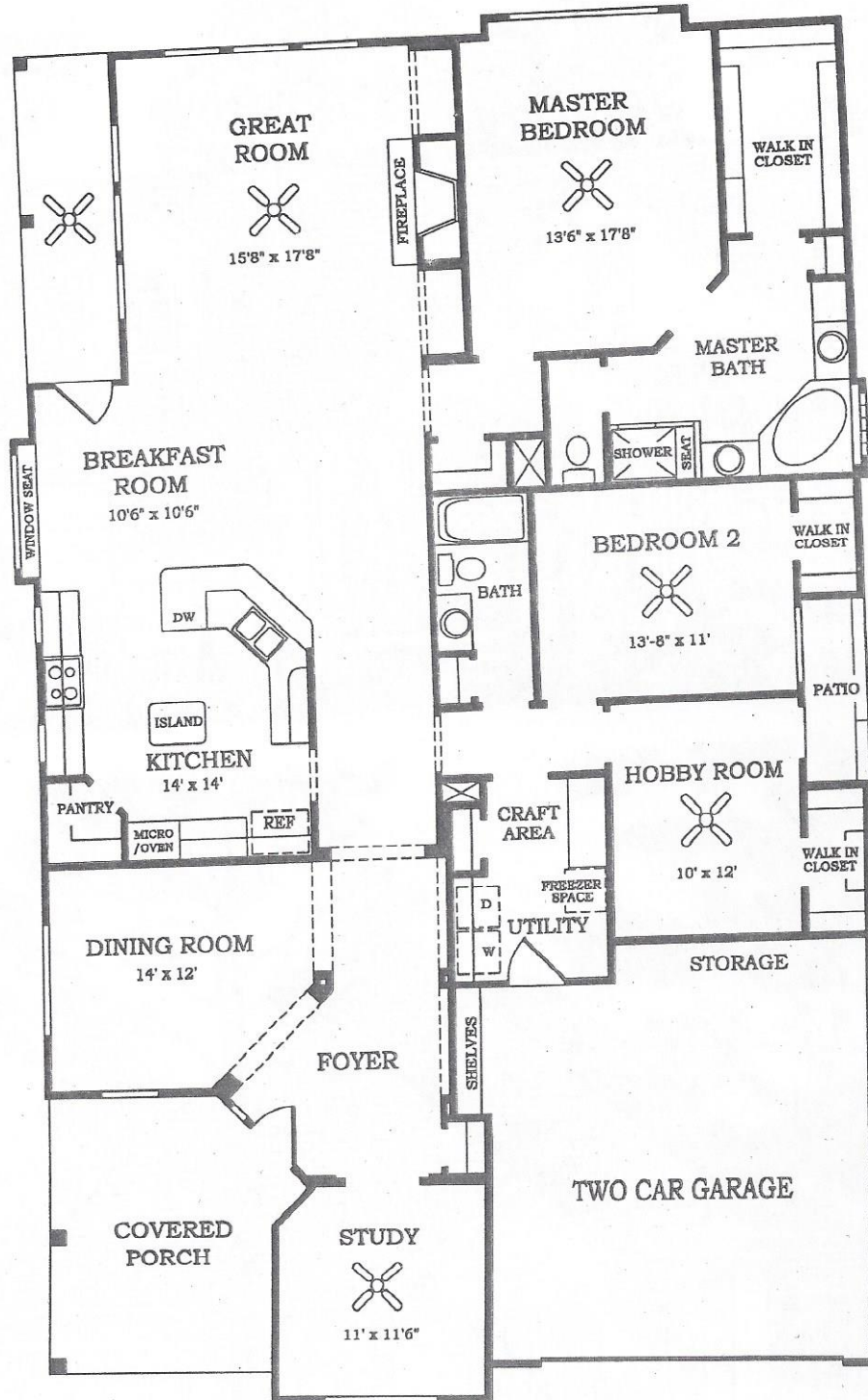


The Kensington

MODEL #7151

TWO BEDROOMS + STUDY + HOBBY ROOM, TWO FULL BATHS, OVERSIZED FRONT PORCH, ISLAND KITCHEN, GREAT ROOM WITH FIREPLACE, COVERED PATIO, UTILITY ROOM WITH CRAFT AREA. TWO-CAR ATTACHED GARAGE WITH BUILT-IN STORAGE AREA. APPROXIMATELY 2447 SQ. FT.



In our continuing efforts to improve our product, Lennar Homes reserves the right to revise specifications and dimensions without notice. All dimensions are approximate. Layout may be revised. Landscaping shown is for conceptual purposes only.

