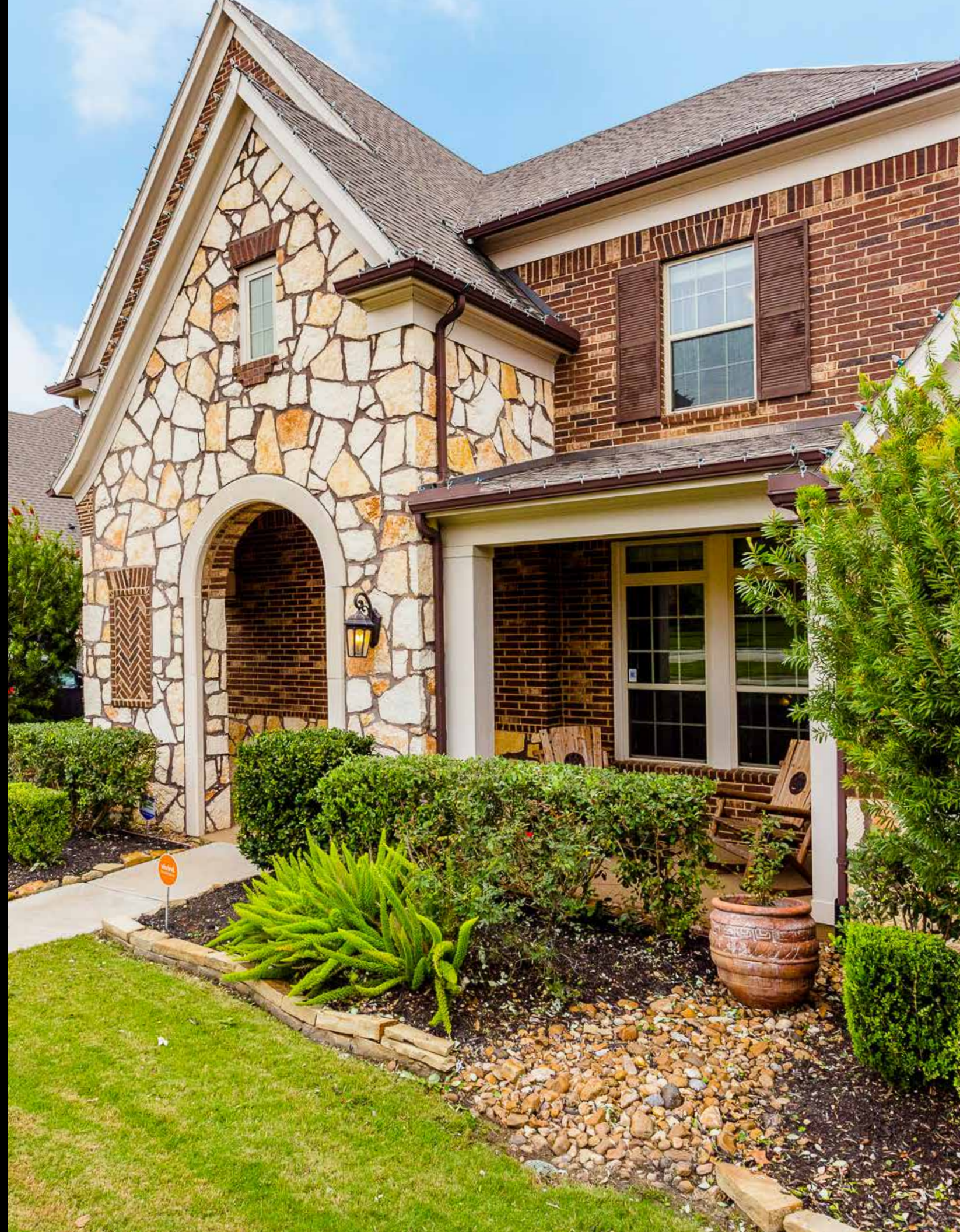




30806 Crest View Terrace • Fulbrook on Fulshear Creek



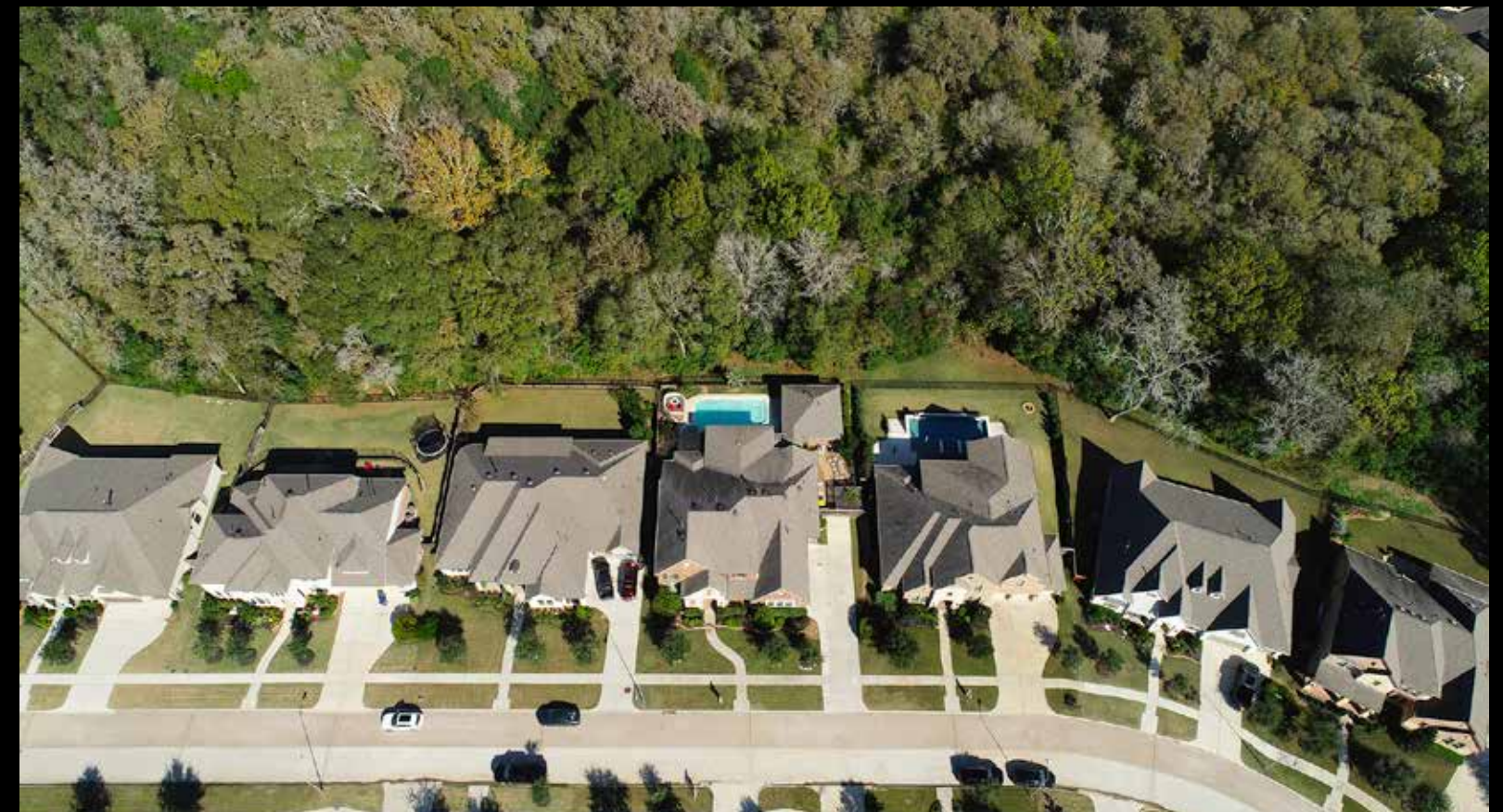
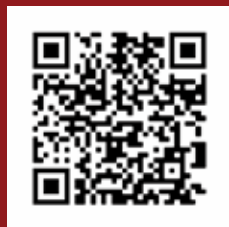
IMPRESSIVE





**E**xtraordinary home offers unusual quality designed for ENTERTAINING. Located on quiet road with massive 18X25 covered back Porch with electric shades and SUMMER KITCHEN with commercial gas grill. PRIVATE BACKYARD with POOL & SPA and FIRE PIT overlooking dense forest! Fully equipped GUEST HOUSE. Inside is finely appointed with ceramic "wood floors", wrought iron, crown molding & high ceilings. Impressive Foyer. Double French doors in Study. Huge Family Room with SLIDING GLASS DOORS and gas log fireplace. CHEF'S KITCHEN has gigantic, 12-foot Island, white cabinets, 48' BUILT-IN Electrolux Refrigerator/Freezer & DOUBLE OVENS, warming drawer, 5-burner gas cooktop, POT FILLER, and wine refrigerator in Butler's Pantry. Stunning views in striking Dining Area. Sumptuous Master Suite. Bath offers large His & Her vanities, clear glass shower, garden tub and large walk-in Closet with built-ins. Gameroom and MEDIA ROOM with tiered seating. Also, 2nd Bedroom down and Side-entry 3-car Garage.

For a high-tech, 3-D tour of this home. Please scan the QR. In doing so, you will be able to see the actual floor plan along with a "dollhouse" view of the home. You will also be able to navigate thru the home with your mouse; going from room to room at your leisure with 360-degree views and from floor-to-ceiling. This enables you to take a complete tour of the home, from anywhere in the world. Amazing!







## FOYER

Prepare to be impressed when you enter this superbly maintained and presented home. A twenty-three-foot-long foyer lined with crown molding ushers guests in. Utilize the conveniently located coat closet on the left to store winter jackets and umbrellas. A look back towards the entrance showcases the stunning wooden front door framed by sidelights and a transom window above. The ceramic wood-like tile shown here is continued throughout the general living spaces of the home. A wrought-iron, multi-landing staircase leads to the second story.



## STUDY

Soothing views over the front lawn through tall double windows are enjoyed while working from home in this Study. Thick crown molding and neutral paint complete this in-home office space just off of the Foyer. Double French doors close off and quiet this space from the hustle and bustle of the home. There's plenty of floor and wall space for furniture, seating and storage, as well.



## KITCHEN

This Kitchen has it ALL! Superb design and function blend expertly with fine granite that is complemented perfectly by loads of fine custom raised-panel cabinetry. Notice how open this space is. A home chef's dream! This seventy-inch built-in fridge and freezer is just one of the many features in this entirely thought out Kitchen. A warming drawer, built-in microwave, dishwasher, double convection ovens, and five burner gas cooktop complete the Electrolux appliance package. Massive would be an understatement for this 12 X 5 Kitchen Island. Seating for six, a stylish paint color, double pendant lights and an abundance of storage are waiting for casual meals and after dinner story sharing.

## BUTLER'S PANTRY

Speaking of after dinner, how about a night-cap? Your very own Butler's Pantry complete with a wine fridge, wine rack and extra storage; conveniently located between the Kitchen and Dining Room and just steps from the Family Room.

## DINING

Topped with a groin-vault ceiling, this elegant open space will easily accommodate eight guests or more and has views to be admired at sunrise and sunset through a set of double bay windows. Both casual and formal meals will be well enjoyed in this dining space.







## FAMILY ROOM

The Family Room is regarded as the “heart” of the home and this one is huge! The twenty-foot ceilings amplify the welcoming and sophisticated feeling. Notice how the room transitions smoothly to the outdoors through a wall of sliding glass doors. From the far corner of the Family Room, notice how the entire living area of the home seamlessly melds together. You’ll never miss a beat mingling with guests, even from upstairs! Just when you thought it couldn’t get any better, simply slide open the wall of glass doors to expand your living space even further onto your Covered Back Patio. The magnificent gas-log fireplace is a dramatic focal point within the Family Room. Color coordinated tile frames the opening and a custom wood mantle sits above. A large display niche waits to welcome your favorite art piece.



## MASTER SUITE

The grandeur doesn't stop! Thirteen-foot vaulted ceilings, windows galore, elegant crown molding and your own private exit to the back patio makes this Master Bedroom wing feel like a retreat. Grand in size and superior in design, the Master Bedroom features wall to wall plush carpeting, custom down-rod ceiling fan, & double doors behind which a private En-Suite awaits.

A large clear glass door-less shower and corner set garden tub are the focal points of this luxe Master Bathroom. Both are surrounded in custom tile and feature sophisticated oil-rubbed bronze hardware; shower offers a wand & an inset for products, making early morning and late night routines a breeze. His & Her vanities, plenty of counter space, expansive framed mirrors, granite countertops with sunken sinks and custom light fixture above all add up to one desirable Master Bath. The opening pictured leads to a large walk-in closet that provides floor to ceiling clothes rods and plenty of built ins.







## GAME ROOM

The wrought iron detailed staircase seen previously, leads to a Texas sized game room that overlooks the Family Room and Foyer. Complete with a trio of windows, allowing for plenty of natural light, access to a shared bathroom, double attic access and a closet for extra storage.



## MEDIA ROOM

Everything in this home is extraordinary, so why not have a Media Room! The room is tucked quietly away and is equal to many Theaters with raised tier seating, a huge screen, and plenty of storage space.



## BED & BATH

The downstairs Guest Bedroom and the Two Upstairs Bedrooms are beautifully appointed with plush carpet, high ceilings, plenty of room, and lovely views. Every Bedroom has access to a Full Bath. All the bathrooms offer an elegant style combined with warm sophistication as well as practical convenience in a relaxing and enjoyable setting.



## PORCH

A personal oasis to enjoy the great outdoors from the Covered Back Porch awaits thru three separate entrances. Access it thru the Family Room, Dining space, or the Master. This Back Porch can be enjoyed all year long. Electric screens enclose the space to block out summertime mosquitoes while a fully bricked gas-log fireplace is ready to warm up cool winter evenings.

## POOL

That's right, there's even a pool! This perfectly sized chlorine pool is ideal for splashing around on warm days. It transitions from 3' deep to 6' in the deep end. Amply sized, this octagon shaped hot tub features a spillover water feature that adds to the ambiance of the back living space and is the ideal spot to relax after a long day.

## BACK YARD

This view of the back of the home properly highlights its remarkable features and beauty and captures the grandeur of the outdoor living space; offering a great home for entertainment and create lifelong memories.

## CASITA

Visitors or long-term guests will enjoy their home-away-from-home. The conveniently located and cozy Casita invites guests to sit back and relax in their very own space that is completed equipped with a full Kitchen, Family Room, Bedroom nook and Full Bath.







PRIVATE



30806 Crest View Terrace • Fulbrook on Fulshear Creek



Scan this QR  
code to take a  
virtual tour



**ROLLER**  
**REALTY**

**NO ONE DOES MORE**



**RollerRealty.net 281-346-0222**



**KAREN DAVIS**



**MIKE ROLLER**



**JORDYN ROLLER**