

R ROLLER
REALTY



5910 Dillon Creek Lane • Seven Meadows

BEAUTIFUL



Located in the highly acclaimed custom section of Seven Meadows, is where you will discover this RECENTLY UPATED 2-story Mediterranean beauty reminiscent of a Tuscan Villa. This PARTNER'S IN BUILDING home is dramatic in design, superb in purpose and finely appointed with Plantation Shutters, wrought iron, crown molding, EXPOSED BEAM CEILINGS, fine granites, custom paint and both wood & travertine floors. Double, 8-foot front doors open to a dramatic Foyer with domed ceiling. Wine Closet and Butler's Pantry serve huge Dining Room. Double doors and 14ft. ceiling in Executive Study. Stunning 2-story Family Room with stone fireplace and matching niches with custom cabinetry. Breathtaking Island Kitchen with double ovens, 6-burner gas cooktop and fine cabinetry. Sumptuous Master Suite with Sitting Area, tray ceiling. Bath has huge vanity and "walk-thru" door-less shower. SECOND BEDROOM DOWN. Upstairs Large Gameroom, movie theater quality MEDIA ROOM and 3-oversized Bedrooms. LOW TAXES!

For a high-tech, 3-D tour of this home. Please scan the QR. In doing so, you will be able to see the actual floor plan along with a "dollhouse" view of the home. You will also be able to navigate thru the home with your mouse; going from room to room at your leisure with 360-degree views and from floor-to-ceiling. This enables you to take a complete tour of the home, from anywhere in the world. Amazing!





FOYER

As you enter the home you're immediately greeted by a grand curved staircase that rises towards the twenty-foot ceilings. The tumbled travertine flooring that flows throughout the main living area coordinates nicely with the fresh paint color coating the walls. A look back towards the entrance of the home highlights the natural light that pours in through the double front doors and large window above. The wrought iron door on the left houses your very own wine cellar.



WINE CELLAR

Built-in cabinetry and shelving to hold your favorite bottles are all tucked neatly under the stairs maximizing the allotted space.

STUDY

A few steps off the Foyer you will find the Study. This room features fourteen-foot ceilings and two arched windows with classic plantation shutters that filter views over the front yard.



DINING ROOM

The attention to detail in this Dining Room is abundant. The dark wood beamed ceiling, custom chandelier, plantation shuttered windows and chair rail detail all add sophistication to this room..

FAMILY ROOM

Travel through the Foyer and you'll step foot into the Family Room where the two-story ceilings, tumbled travertine, crown moulding and custom wood beam details continue. Built-in cabinets inset into the wall frame the gas-log fireplace on either side. Lime washed stone surrounds the fireplace while a custom wooden mantle sits above. A look back towards the Foyer showcases the entrance to the master bedroom, conveniently located Powder Bathroom and open floorplan that flows seamlessly into the Kitchen. A wall of large windows with transoms above upgraded with plantation shutters drench the Family Room in natural light.





KITCHEN

Centered by a large, curved island with seating, this Kitchen features brand new granite countertops, a new modern backsplash, loads of cherry wood cabinets with crown molding and Jenn-Air appliances. This six-burner Jenn-Air gas stove features a down draft vent to eliminate the need of an overhead vent and avoids disturbing the clean design of this Kitchen. On either side of the stove are convenient spice rack pullouts. Adding a dash of your favorite seasoning has never been easier. There are also pots and pan drawers making storage extra convenient. Double ovens located right outside the Butler's Pantry enables the home chef to transport warm meals quickly to the dining room for serving.



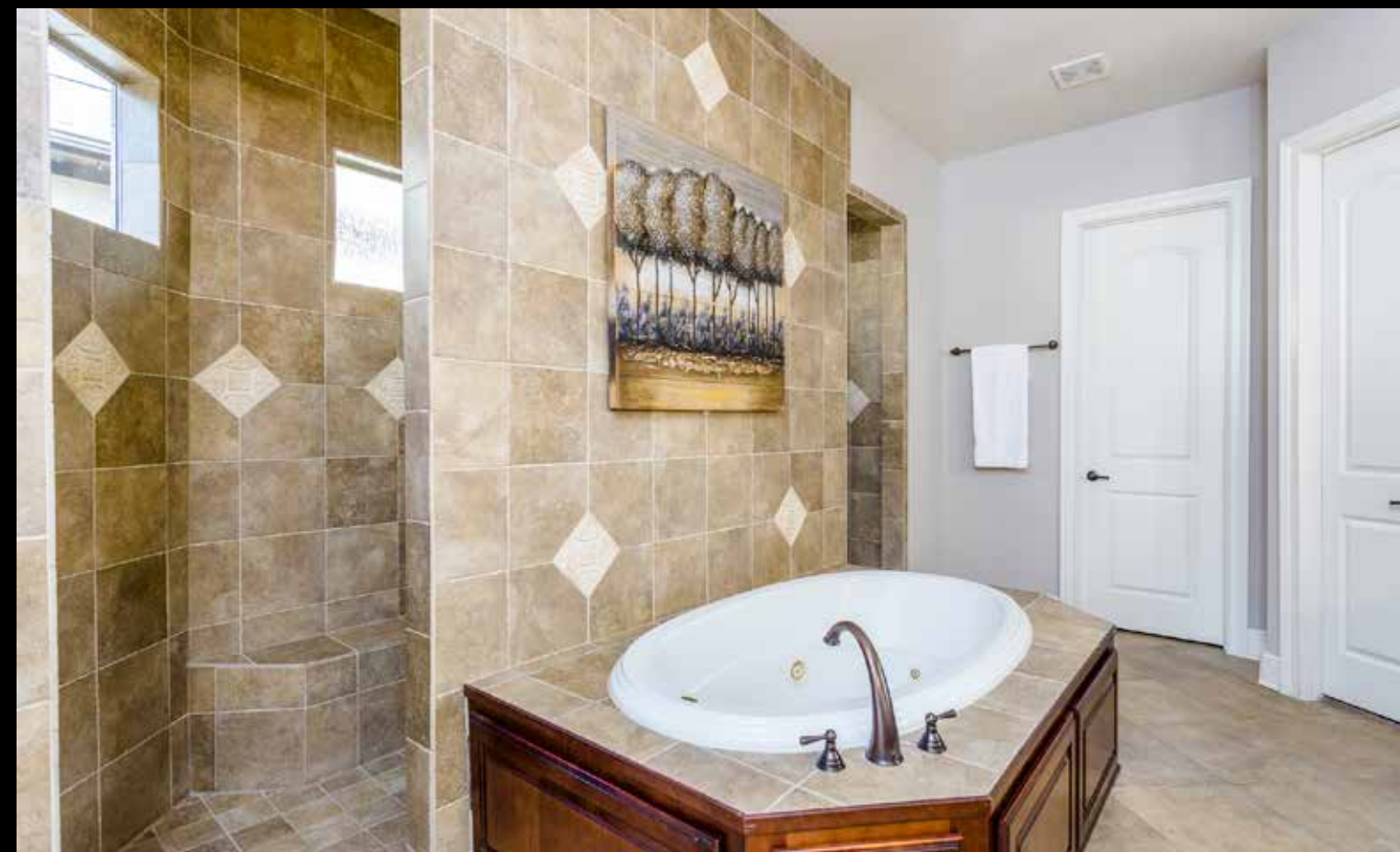
BREAKFAST

Cups of coffee and companionship are begging to be shared here. Featuring a trio of tall windows and a glass paned exit to the back yard this space is the perfect Breakfast Room.

MASTER SUITE

Through the Family Room you'll be able to access your Master Bedroom. Floored with new carpet, filled with natural light and topped with a tray ceiling and thick crown molding this space is a true retreat. With plenty of space, this room will easily accommodate a king-sized bedroom set and additional seating if you choose.

Enter through the double French doors to find your spa-like Master Bathroom. Recently updated with new granite, plumbing and light fixtures, and mirror frames, this space has been taken to the next level. Resemblant of a luxury hotel this car wash style shower and whirlpool tub are details sought by many. The 'carwash' style shower is fully tiled in a custom selection and features an elongated bench seat and dual shower heads making this the ideal spot to wash off a long day.





GAME ROOM

Head upstairs and you'll find a massive Game Room. The pop-up ceiling accentuates the size of this space that could easily accommodate multiple game tables or serve as a second Family Room. Elongated windows line the side wall of this room allowing just enough sunlight in during the day. Located separate from the main floor living areas means the celebrations from winning a board game won't be heard in the kitchen.



MEDIA

Who doesn't want their very own movie theater in their home? From the sconce lighting and fun patterned carpet to the wood paneling and tiered seating platforms this Media Room has it all. This space also has built-ins for receivers, features pre-installed surround sound and already has a projector mount present.



BED & BATH

The one secondary bedroom downstairs and three upstairs all feature new plush carpeting, large walk-in closets and their own en-suites, these bedrooms are a delight. With a framed glass walk-in shower, and granite topped vanity, this downstairs Bathroom is perfect. With access from the back porch, this would make a great Pool Bath if you chose to install one. The upstairs bathrooms all have extended vanity space, large mirrors and tub and shower combo for quick and convenient morning routines.

PORCH

Step outside through the Breakfast Room and you'll find an elongated covered Back Porch that spans the width of the back of the home. Gas and water hookups add the possibility of an outdoor kitchen being easily installed. While dining outdoors, you get to gaze over your huge backyard. You could have a large pool and spa installed and still have plenty of green space that also wraps around the side of the home.

BACK YARD

From the side yard you can truly appreciate the size of this space. Recently spruced up landscaping runs along the entirety of the fence line adding outdoor appeal. Lush green grass coats the back yard and appropriately placed French drains filter excess moisture away. A look back on the home allows you to take in the number of windows, carefully chosen elevation changes and overall grandeur of your future home.





SPACIOUS

5910 Dillon Creek Lane • Seven Meadows



Scan this QR
code to take a
virtual tour



ROLLER
REALTY

  **RollerRealty.net 281-346-0222**



KAREN DAVIS



MIKE ROLLER



JORDYN ROLLER