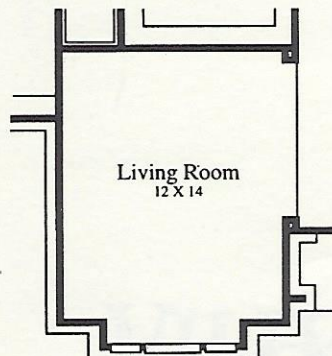
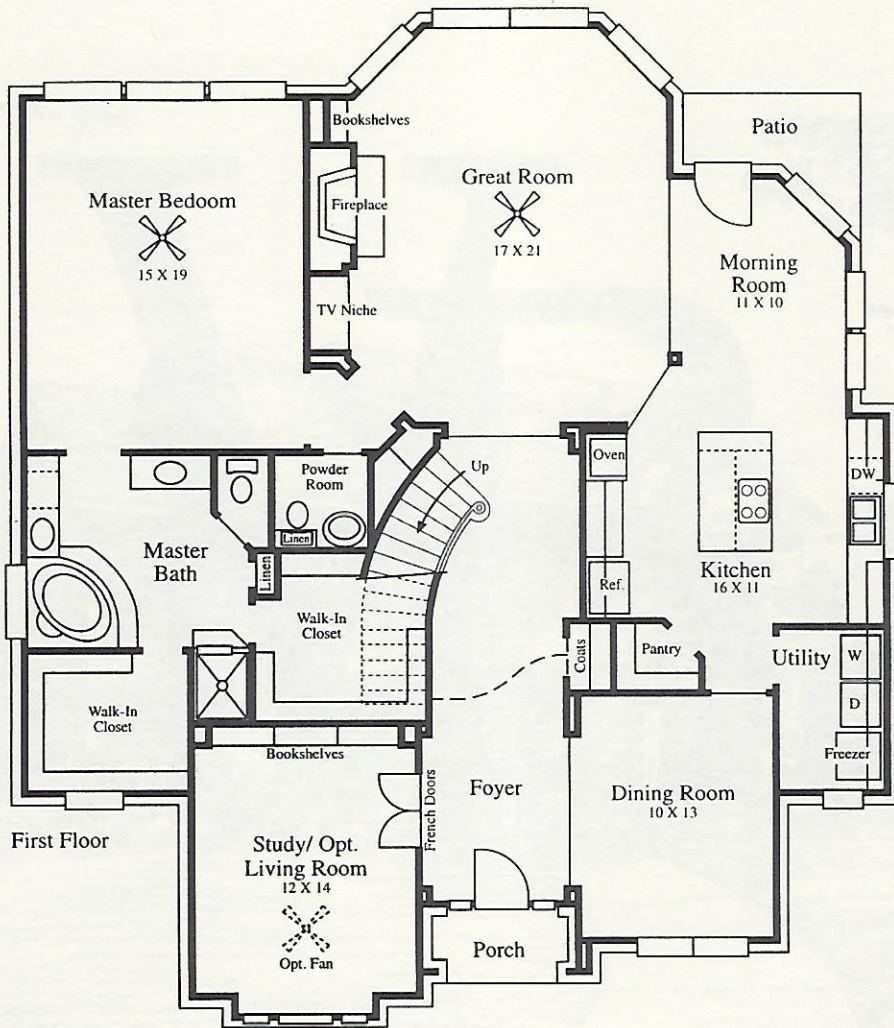
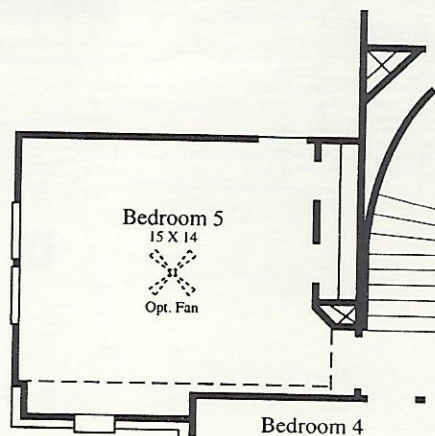
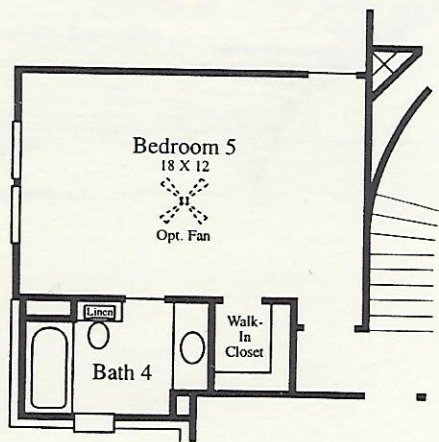
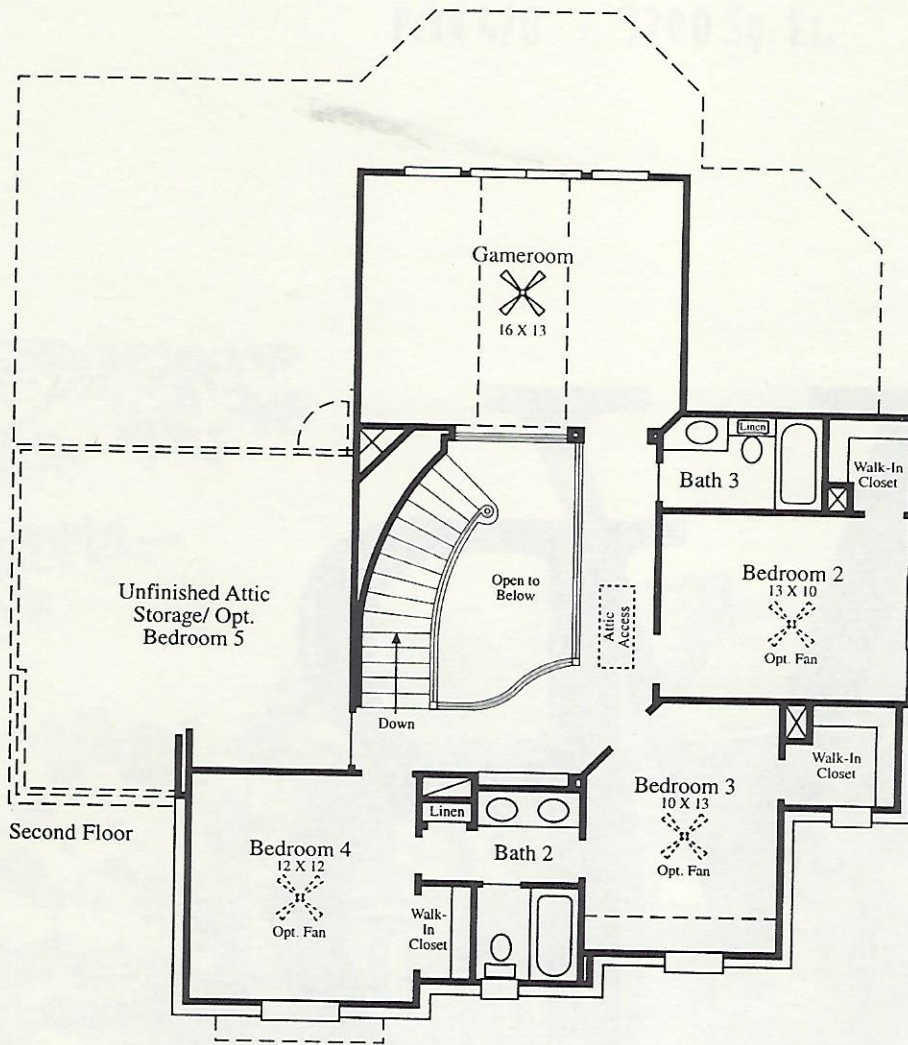


# MEMPHIS

PLAN 470 - 3200 Sq. Ft.



Opt. Living Room



- An elegant curved staircase graces this home's two-story foyer for an unforgettable first impression.
- Set just off the foyer, a classic study offers built-in bookshelves and a French door entry. This room can be easily converted into an elegant formal living room.
- The expansive great room is highlighted by 10-ft. ceilings, a rear wall of windows and a grand fireplace surrounded by a convenient built-in T.V. niche and bookshelves. Designed for family interaction, the great room opens to sunny morning room and island-centered kitchen.
- A gourmet-style kitchen offers a walk-in pantry, convenient island cooktop and ample counter space.
- One of this home's best features is a private downstairs master retreat. A bright expanse of windows and 10-ft ceiling add to the room's ambiance. In addition, a tremendous bath with two large walk-in closets, a Whirlpool tub, and his-and-her dual vanities complete the suite.
- Upstairs, four spacious bedrooms each offer a walk-in closet. A large gameroom with a 10-ft. ceiling creates the perfect play area an optional 5<sup>th</sup> bedroom gives the Memphis plenty of flexibility for growing families.