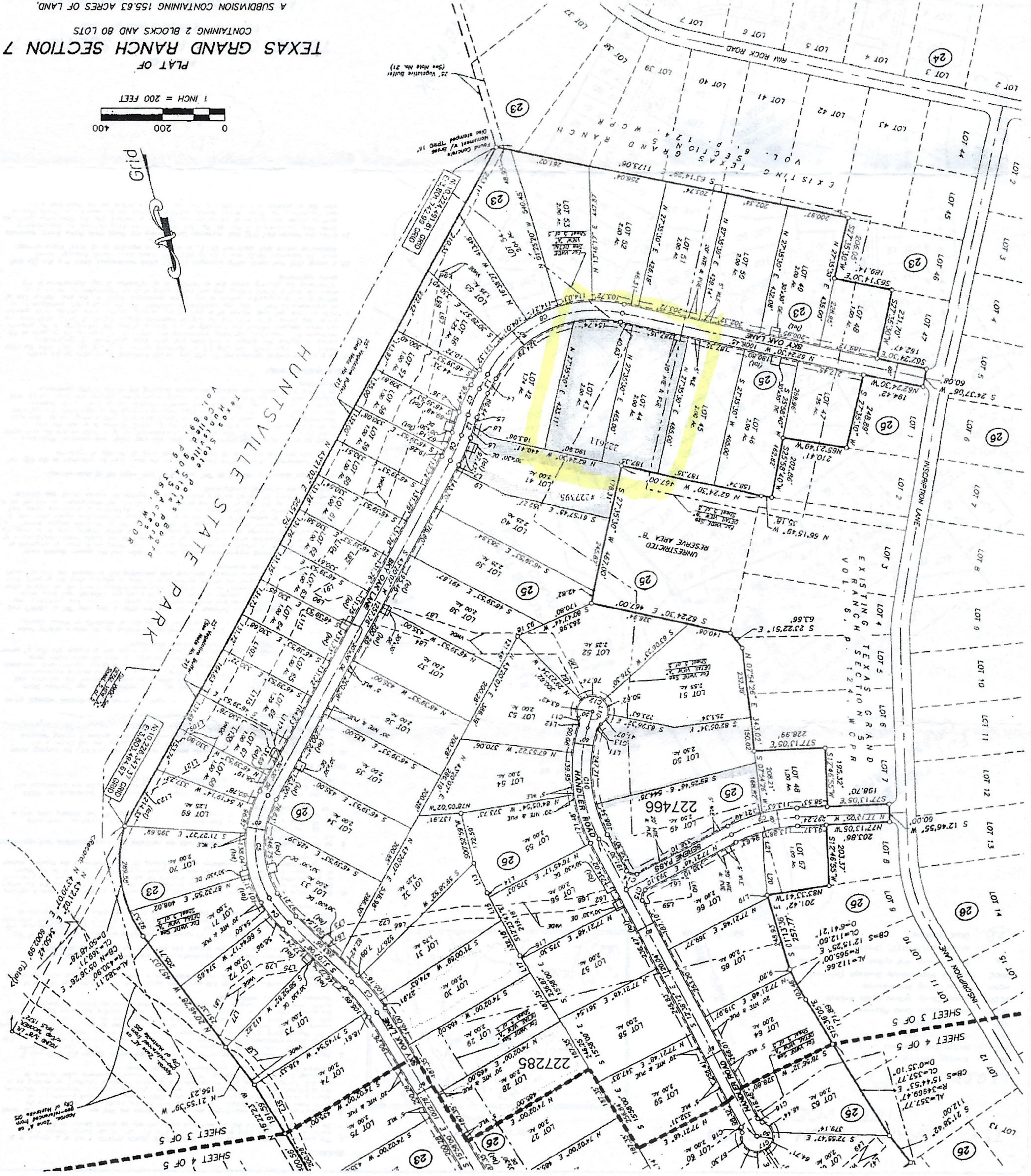
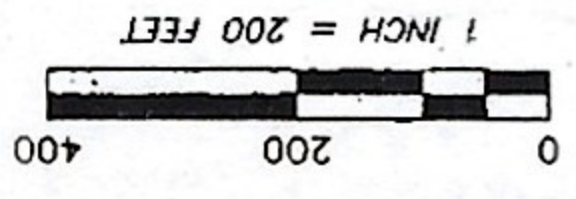


FOR TAX PURPOSES
THIS PLAT COMPLES
WITH SECTION 12.002
OF THE PROPERTY
CODE

NAMKEN, INC.
P.O. Box 1158, New Waverly, TX 77358
TBP's Firm No. 10154090
936-661-3325

MAY 2018

TEXAS GRAND RANCH SECTION 7
PLAT OF
CONTAINING 2 BLOCKS AND 80 LOTS
A SUBDIVISION CONTAINING 155.63 ACRES OF LAND,
BEING OUT OF THE RESIDUE OF A CALLED 3314.028 ACRE TRACT
DESCRIBED IN A DEED TO I TEXAS GRAND RANCH, LLC,
RECORDED IN VOL. 1271, PG. 484, OFFICIAL
PUBLIC RECORDS, WALKER COUNTY, TEXAS,
JAMES B. WILSON SURVEY, A-607
WALKER COUNTY, TEXAS



- LEGEND**
- DE Drainage Easement
 - NTE Nature Trail Easement
 - PUE Public Utility Easement
 - WLE Waterline Easement
 - WCOR Walker County Dead Records
 - WCOPR Walker County Official Public Records
 - WCPR Walker County Plat Records
 - WVDE Variable Width Private Drainage Easement
 - Set 5/8" Iron Rod w/cap marked "MICHAEL A
 - NAAMKEN RPLS 6533, UNLESS otherwise noted
 - Black Numbers

SHEET 3 OF 5
SHEET 4 OF 5

SHEET 3 OF 5
SHEET 4 OF 5
SHEET 5 OF 5