



BAMMEL TRACE ~ Townhomes

Standard Features

INTERIOR FEATURES

- Hand Laid Tile in Entry
- Choice of Easy Clean *Armstrong* Vinyl
- *Shaw* Carpet
- *Sherwin-Williams* Paint
- Walk in Closets* with Wood Shelving
- Anglia's Customized Design Package
 - Raised Panel Interior Doors
 - Upgraded Trim
 - Crown Molding in Master and Living
- Rounded Sheetrock Corners
- Designer Brushed Nickel Lighting Package
- Brushed Nickel Hardware
- Telephone Jacks in Kitchen and Owner's Retreat
- Cable Outlets in Living and Owner's Retreat
- Ceiling Fans in Family Room and Owner's Retreat
- All Rooms Blocked and Wired for Ceiling Fans
- 9' Ceilings*

KITCHEN FEATURES

- 42" Oak Wall Cabinets with Crown Molding
- Under Cabinet Lighting
- Choice of Job Applied *Wilsonart* Formica Counter Tops
- Tiled Backsplash
- 8" Stainless Steel Sink with Vegetable Sprayer
- Price Pfister Fixtures
- Recessed Can Lighting
- Dimmer Switch
- GE Black on Black Appliance Package
 - Gas Range
 - Microwave
 - Dishwasher

OWNERS RETREAT

- Cultured Marble Vanity Top with Choice of Color
- Oak Cabinets to Match Kitchen
- Shower with Glass Door and Garden Tub with 12" Tiled Surround
- Elongated Commodes*

SECONDARY BATHS

- Cultured Marble Vanity Top with Choice of Color
- Steel Tub with Porcelain Covering
- 12" Tiled Surround
- Oak Cabinets to Match Kitchen
- Porcelain Pedestal Sink in Powder Room*

CONSTRUCTION

- Accent Stone*
- *Cemplank* Lap Siding by *James Hardie*
- *CertainTeed* 20 Yr Shingle
- Tongue and Groove Subfloor

EXTERIOR FEATURES

- Mahogany 6-panel Entry Door with Peep Hole
- Coach Lighting for Added Security*
- Gutters Front and Back
- Full Sod
- Full Landscaping Package
- 3 Water Faucets for Easy Access*
- 6' Privacy Fence

ENERGY EFFICIENCY

- 14 SEER A/C Unit
- White Aluminum Double Pane, Low-E Windows for added Comfort and Savings
- *Honeywell* Programmable Thermostat
- Insulation
 - Blown R-30 in Flat Areas
 - R-19 Batts in Slopes
 - R-13 Batts in Walls
- Electric Dryer Connections in Utility Room*
- PEX Manabloc Plumbing System for Increased Water Efficiency
- 40-Gallon Quick Recovery Gas Water Heater

SECURITY AND COMFORT

- Smoke Detectors throughout Home
- Steel Garage Door with Garage Door Opener
- Full Alarm System with Two Key Pads
- Professionally Engineered Post-Tension Foundations
- Home Buyers Warranty
- Guided Inspections to Insure the Highest Standard of Quality is met

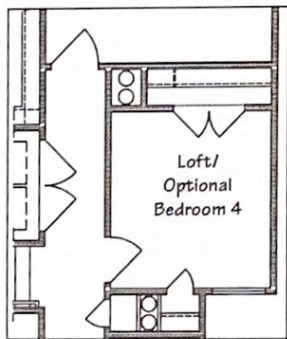
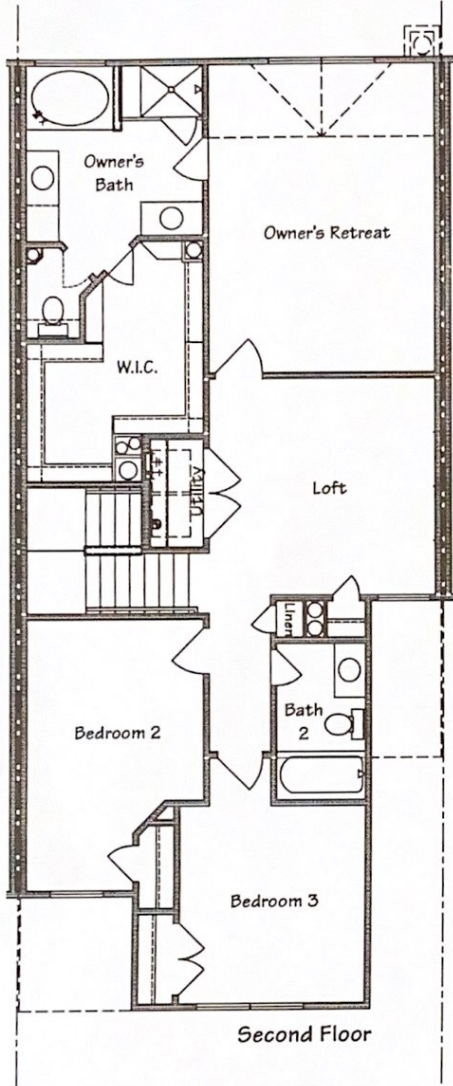
*Varies Per Plan

Approved by: 9/24/2009

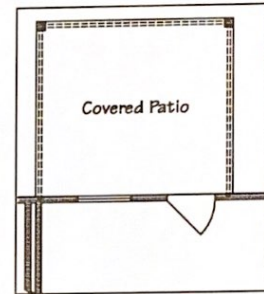
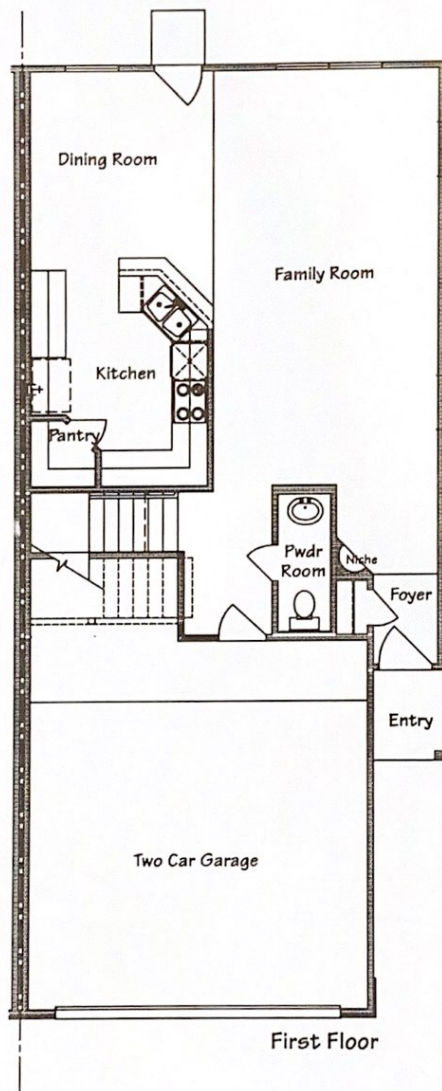


THE CORSICA • 1,787 Sq. Ft.

- 3 Bedrooms, 2 1/2 Baths
- Kitchen Opens to Dining Room and Large Family Room
- Owner's Retreat with Large Walk-In Closet



Optional Bedroom 4 (End Unit Only)



Optional Covered Patio



Optional Fireplace in Family Room