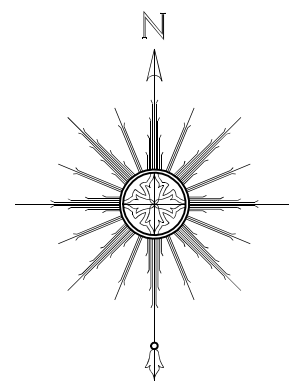


LEGEND

- ⊙ 1/2" iron rod with plastic cap stamped "RPLS 4487" found
- 3/8" iron rod found
- ⊙ 1 1/2" iron pipe found
- ▲ "PK" nail found
- △ 8" galvanized spike with washer set



Geodetic North

There are no visible encroachments onto this tract by buildings or structures from adjacent tracts. There are no visible easements on or crossing this tract other than those shown and those for utilities.

I, Terry B. Hedrick, certify that this plat accurately represents the results of a survey made on the ground on August 20, 2021.

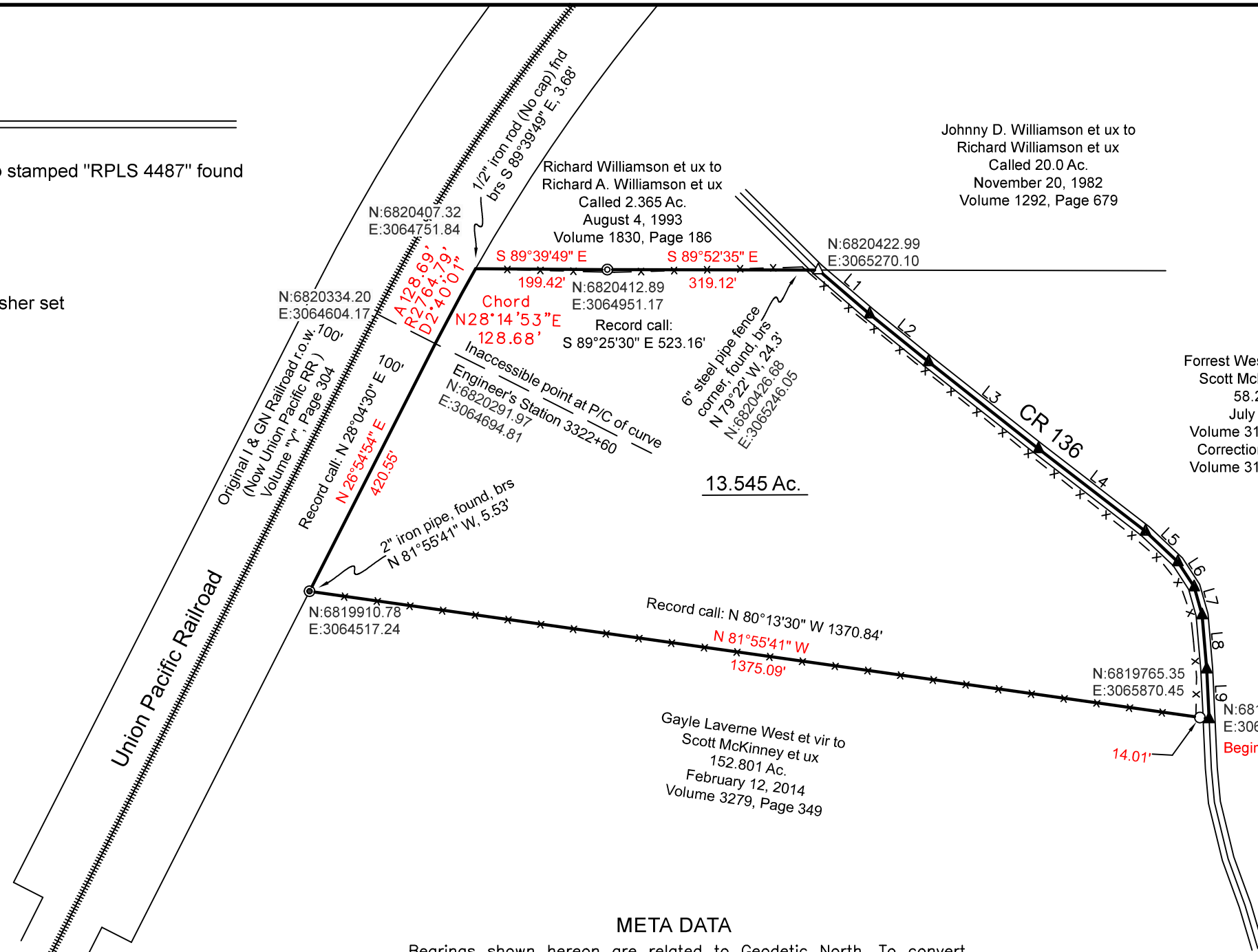
Terry B. Hedrick

Terry B. Hedrick
Registered Professional Land Surveyor No. 4487



HEDRICK LAND SURVEYING COMPANY

Phone (903) 983-3425 Firm No. 10073000



Johnny D. Williamson et ux to
Richard Williamson et ux
Called 20.0 Ac.
November 20, 1982
Volume 1292, Page 679

Forrest West et ux et al to
Scott McKinney et ux
58.222 Ac.
July 5, 2012
Volume 3151, Page 233
Correction Instrument
Volume 3157, Page 513

13.545 Ac.

Gayle Laverne West et vir to
Scott McKinney et ux
152.801 Ac.
February 12, 2014
Volume 3279, Page 349

META DATA

Bearings shown hereon are related to Geodetic North. To convert bearings shown (Geodetic) to bearings related to Grid North for The Texas Coordinate System of 1983, North Central Zone, rotate bearings shown counter-clockwise by the Mapping Angle of 01°56'17". Distances shown hereon are expressed in U.S. Survey Feet as measured horizontally along the surface of the Earth. To convert distances shown (Horizontal-surface) to distances measured along the Grid for The Texas Coordinate System of 1983, North Central Zone, multiply distances shown by the Combined Scale Factor of 0.999936168. Cartesian Coordinates shown hereon are related to the Texas Coordinate System of 1983, North Central Zone, and were obtained by static GPS observations made on site.

Line Table

LINE	BEARING	DISTANCE
L1	S 49°24'52" E	102.59'
L2	S 50°57'49" E	114.79'
L3	S 51°39'45" E	212.25'
L4	S 52°18'54" E	204.34'
L5	S 46°42'33" E	67.52'
L6	S 33°08'25" E	45.35'
L7	S 15°31'09" E	44.13'
L8	S 05°00'20" E	82.22'
L9	S 02°38'41" E	75.35'



SURVEY PLAT OF
13.545 AC. OF LAND
ELIJAH COLLARD JR. SURVEY A-207
RUSK COUNTY, TEXAS

Reference Deed: J.B. Morris et ux to Rowan Land Partners, LLC, called 13.48 acres, November 2, 2020, Volume 3737, Page 506, Official Public Records, Rusk County, Texas.

Scale:	Date:	Job:
1"=200'	08/20/2021	21-82