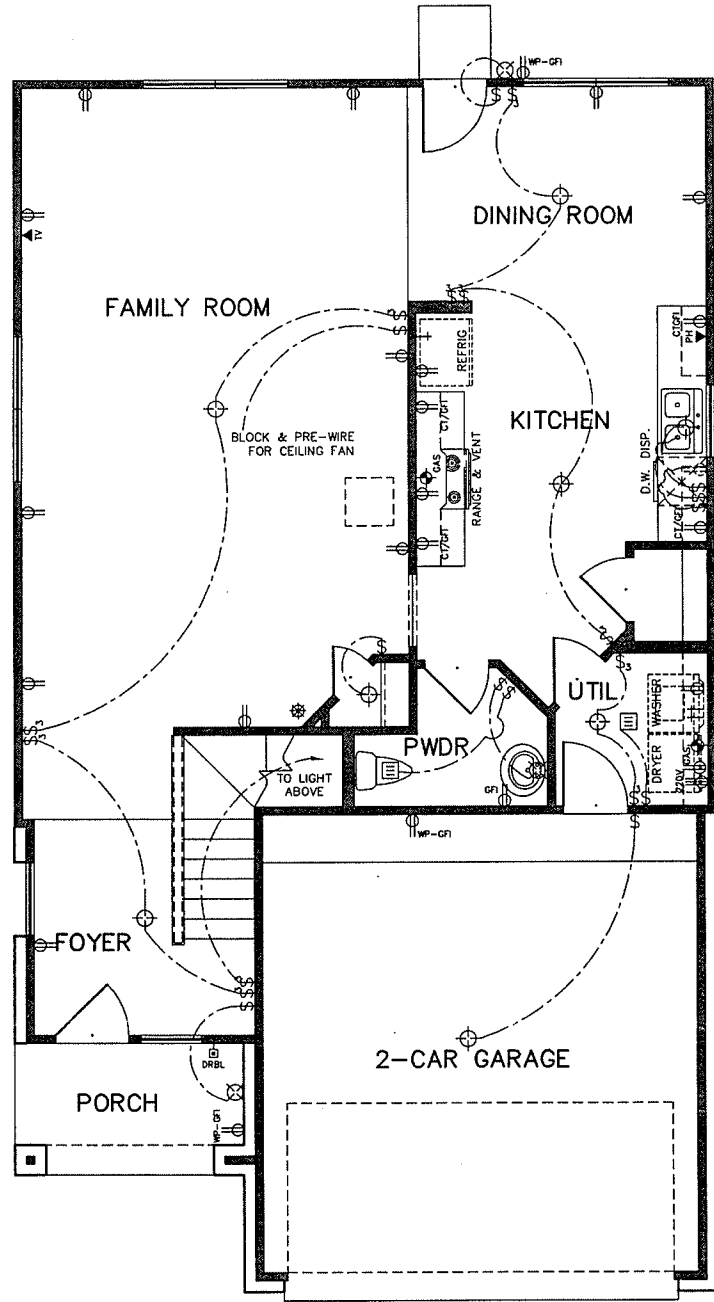


**ELECTRICAL  
2ND FLOOR PLAN**

1/8"=1'-0"



**ELECTRICAL  
1ST FLOOR PLAN**

1/8"=1'-0"

NOTE: EXHAUST FAN IN UTILITY PER HOUSTON CITY CODE.  
 NOTE: NEC: 210.12 ARC-FAULT PROTECTION REQUIRED ON ALL BEDROOM OUTLETS