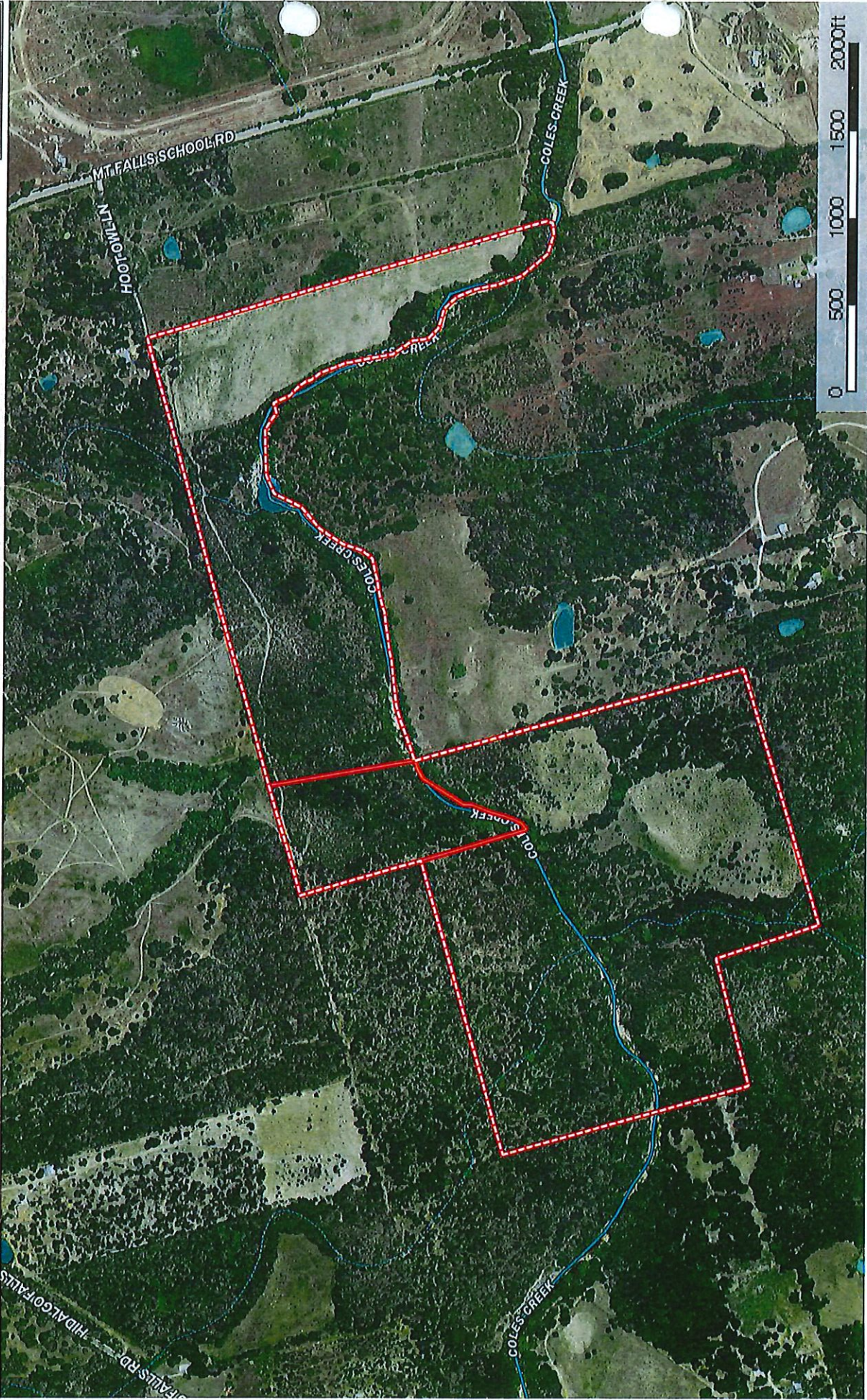


Hoot Owl Lane, 138.5 ac  
Texas, AC +/-



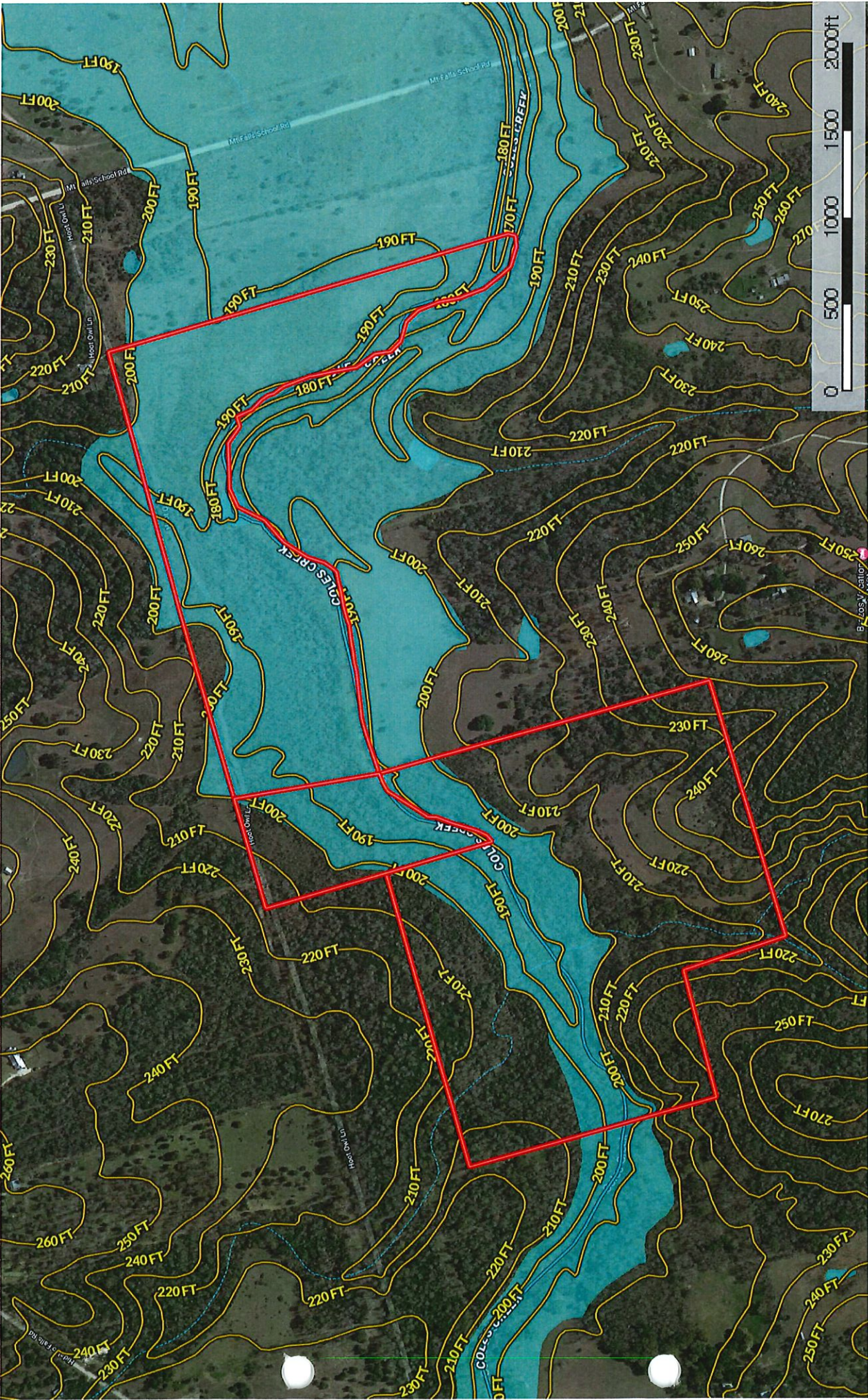
- Boundary
- Stream, Intermittent
- Boundary
- River/Creek
- Water Body

The information contained herein was obtained from sources deemed to be reliable. MapRight Services makes no warranties or guarantees as to the completeness or accuracy thereof.





**Hoot Owl Lane, 138.5 ac**  
Texas, AC +/-



▭ Boundary  
 100 Year Floodplain  
 500 Year Floodplain  
 Floodway  
 Special  
 Unmapped/Not Included  
 Stream, Intermittent  
 River/Creek  
 Water Body

0 500 1000 1500 2000ft

The information contained herein was obtained from sources deemed to be reliable. MapRight Services makes no warranties or guarantees as to the completeness or accuracy thereof.



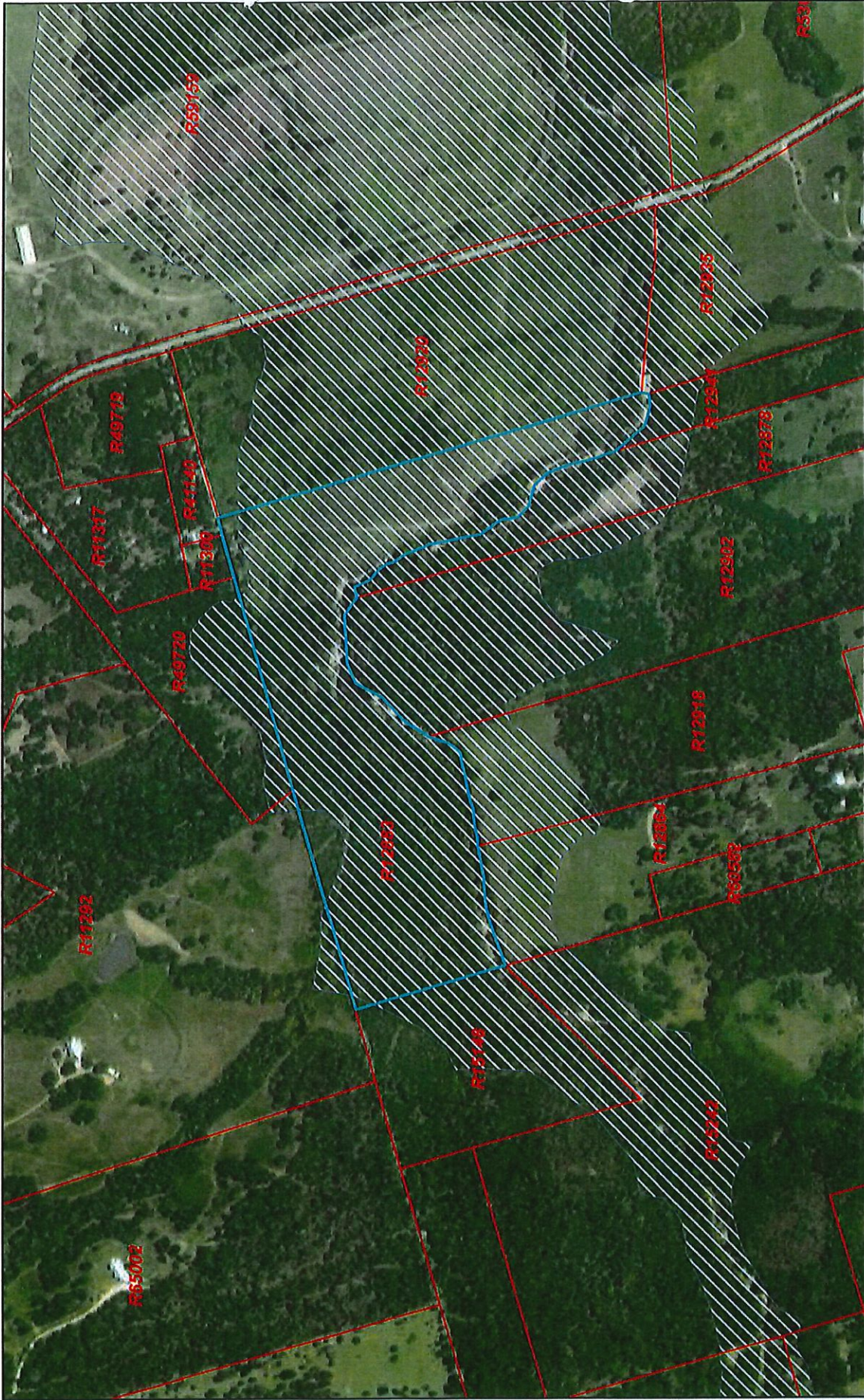








# Washington CAD Web Map



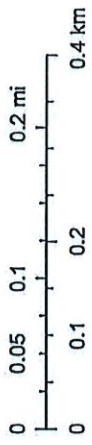
10/18/2020, 4:19:04 PM

 Parcels

 Washington County Boundary

 Flood Plain

1:9,028



Source: Esri, Maxar, GeoEye, Earthstar Geographics, CNES/Airbus DS,

Disclaimer: This product is for informational purposes only and has not been prepared for or be suitable for legal, engineering, or surveying purposes. It does not represent an on-the-ground survey and represents only the approximate relative location of boundaries.