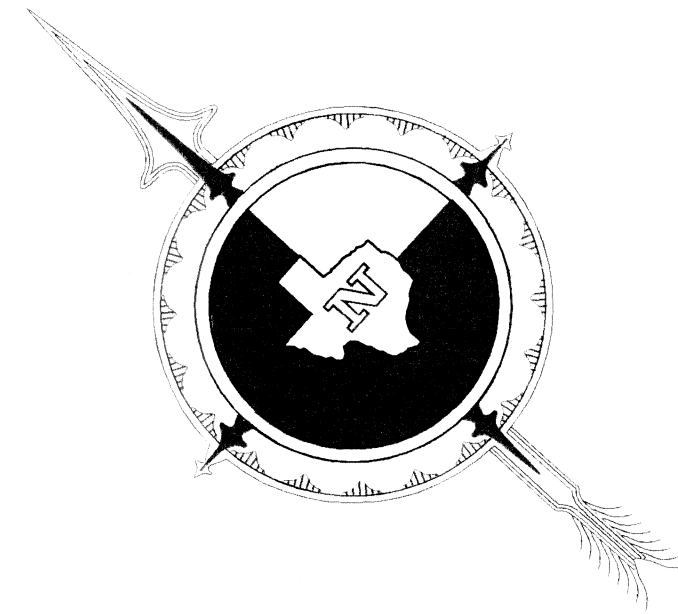


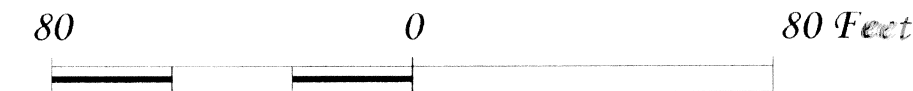
FINAL PLAT
FAIR WEATHER FIELD
IN THE
H. H. PENNINGTON SURVEY, A-323
H. & T.C.R.R. Co. SURVEY Sec. 2, A-184
WALLER COUNTY, TEXAS

a Subdivision Consisting of 20 Residential Tracts (2 Blocks) containing 20.004 Acres,
2 Reserves containing 98.459 Acres, 3 Roadways containing 5.202 Acres

Totaling 123.665 Acres
(Called 123.487 Acres as Recorded in
Vol. 884, Pg. 237 & Vol. 1212, Pg. 357, O.R.W.C.T.)



SCALE: 1" = 80'



CURVE TABLE

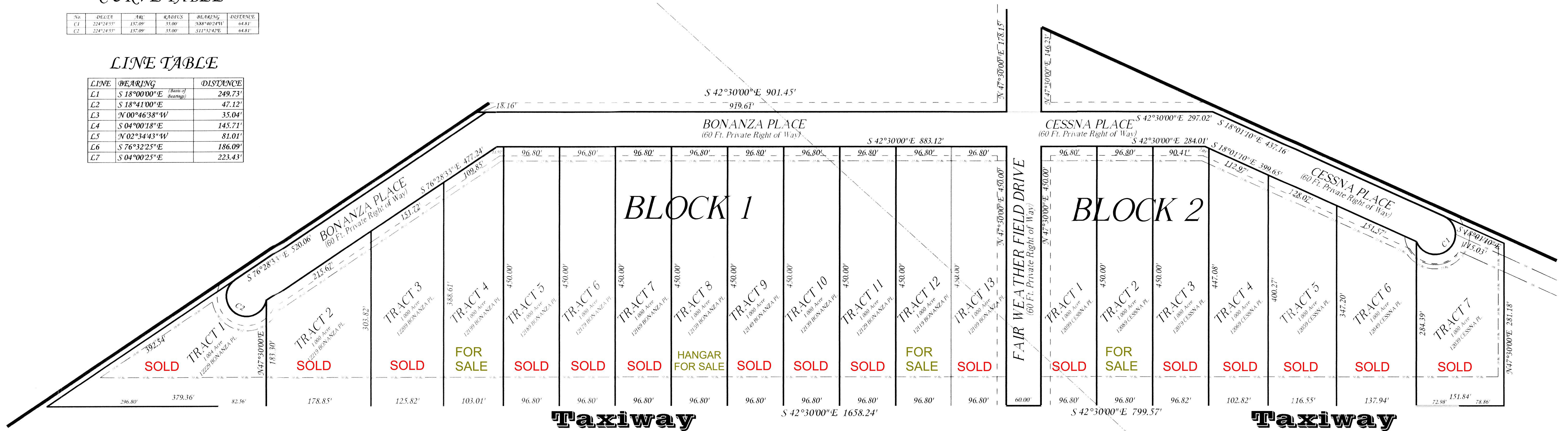
No.	DELTA	ARC	RADIUS	BEARING	DISTANCE
C1	224°24'55"	157.09'	35.00'	N88°40'24"W	64.81'
C2	224°24'55"	157.09'	35.00'	S11°52'42"E	64.81'

LINE TABLE

LINE	BEARING	DISTANCE
L1	S 18°00'00"E (Range of Bearings)	249.73'
L2	S 18°41'00"E	47.12'
L3	N 00°46'38"W	35.04'
L4	S 04°00'18"E	145.71'
L5	N 02°34'43"W	81.01'
L6	S 76°32'25"E	186.09'
L7	S 04°00'25"E	223.43'

LEGEND

- 1/2" IRON ROD FOUND
- 5/8" IRON ROD FOUND
- CONCRETE MOVEMENT FOUND
- 5/8" IRON ROD SET
- BARBED WIRE FENCE
- 16 FT. UTILITY EASEMENT
- DRUNKING EASEMENT
- BUILDING LINE
- SURVEY LINE
- SPT. TERM. ELEV. = 171.75'
- BRASS CAP SET IN CONCRETE
- 3" NORTHWEST LONG NORTHERLY CORNER OF FAIR WEATHER FIELD DRIVE FROM THE INTERSECTION HYDRO-SOUTHWEST CORNER OF FM 139
- OVERHEAD POWER LINES
- POWER POLE
- GUY WIRE
- () DEED CALL



MAIN RUNWAY
F.A.A. Approved TX42

Owner - Developer

Aviation Estates, Ltd.
 Leonard F. Firth, General Partner
 P.O. Box 1418
 Brookshire, Waller County, Texas 77423
 1-281-702-3331
 www.indsock@yahoo.com

COMPILED BY
A-SURVEY
INCORPORATED
 19 NORTH MILLER
 BELLVILLE, TEXAS 77418
 1-979-865-8111
 1-979-865-5086 (FAX)
 1-800-4-A-SURVEY
 ASURVEY@a-survey.com
 PROJECT No.: 10139AF22
 SHT. 2 OF 3

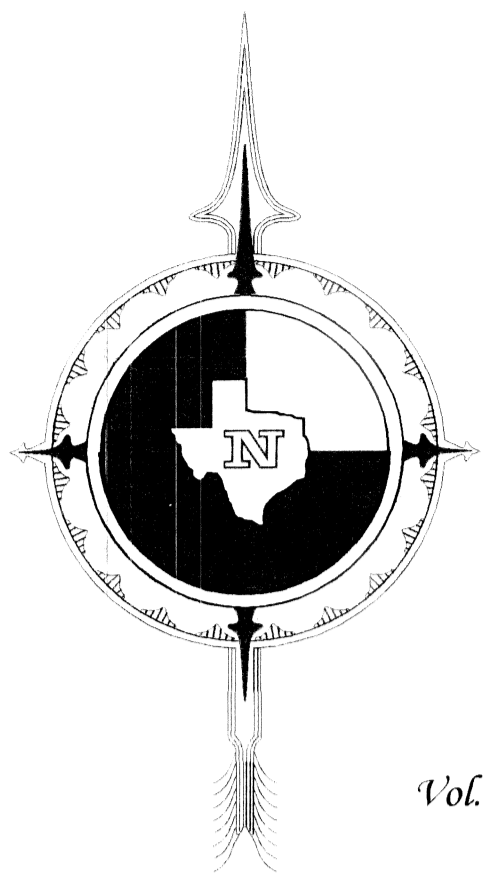
H. H. PENNINGTON SURVEY, A-323

**FINAL PLAT
FAIR WEATHER FIELD**

**IN THE
H. H. PENNINGTON SURVEY, A-323
H. & T.C.R.R. Co. SURVEY Sec. 2, A-184
WALLER COUNTY, TEXAS**

**a Subdivision Consisting of 20 Residential Tracts (2 Blocks) containing 20.004 Acres,
2 Reserves containing 98.459 Acres, 3 Roadways containing 5.202 Acres**

**Totaling 123.665 Acres
(Called 123.487 Acres as Recorded in
Vol. 884, Pg. 237 & Vol. 1212, Pg. 357, O.R.W.C.T.)**



Vu The Phan, et al
Called 110.00 Acres
Vol. 568, Pg. 670, O.R.W.C.T.

Emicael Ortega, et al
Called 29.601 Acres
Vol. 981, Pg. 591, O.R.W.C.T.

Silbano Torres, et ux
Called 20.00 Acres
Vol. 791, Pg. 693, O.R.W.C.T.

Silbano Torres, et ux
Called 80.00 Acres
Vol. 791, Pg. 693, O.R.W.C.T.

Silbano Torres, et ux
Called 20.00 Acres
Vol. 791, Pg. 693, O.R.W.C.T.

Bilulfo Roman, et ux
Called 20.00 Acres
Vol. 784, Pg. 118, O.R.W.C.T.

Andres R. Escobar
Called 25.00 Acres
Vol. 900, Pg. 548, O.R.W.C.T.

Kenneth K. Kins
Called 25.00 Acres
Vol. 900, Pg. 560, O.R.W.C.T.

John C. Carey
Called 11.0654 Acres
Vol. 304, Pg. 676, D.R.W.C.T.

John C. Carey
Called 10.00 Acres
Vol. 398, Pg. 449, D.R.W.C.T.

George C. Caballero, et ux
Called 5.00 Acres
Vol. 1079, Pg. 458, O.R.W.C.T.

Selim Halilovic, et ux
Called 5.00 Acres
Vol. 1210, Pg. 762, O.R.W.C.T.

Craig Baker Marbel Co., Inc.
Called 5.00 Acres
Vol. 717, Pg. 137, O.R.W.C.T.

M. D. Hamid, et ux
Called 2.00 Acres
Vol. 1132, Pg. 635, O.R.W.C.T.

Hafizar Mondal
Called 8.000 Acres
Vol. 1150, Pg. 732, O.R.W.C.T.

Juan Bartolome, et al
Called 5.000 Acres
Vol. 651, Pg. 295, O.R.W.C.T.

Antonio C. Hernandez
Called 5.045 Acres
Vol. 674, Pg. 654, O.R.W.C.T.

Jaeline Family Limited Partnership
Called 250.585 Acres
Vol. 906, Pg. 692, O.R.W.C.T.

H. & T.C.R.R. Co. SURVEY Sec. 2, A-184

CURVE TABLE

No.	DELTA	ARC	CHORD	BEARING	DISTANCE
C1	22°24'35"	117.09'	117.00'	S88°40'24"W	64.81'
C2	22°24'35"	117.09'	117.00'	S117°32'42"W	64.81'

LINE TABLE

LINE	BEARING	DISTANCE
L1	S 18°00'00"E	249.73'
L2	S 18°41'00"E	47.12'
L3	N 00°46'38"W	35.04'
L4	S 04°00'18"E	145.71'
L5	N 02°34'43"W	81.01'
L6	S 76°32'25"E	186.09'
L7	S 04°00'25"E	223.43'

LEGEND

- 1/2" IRON ROD FOUND
- 5/8" IRON ROD FOUND
- CONCRETE MONUMENT FOUND
- 5/8" IRON ROD SET
- BARBED WIRE FENCE
- 16 FT. UTILITY EASEMENT
- DRUNKEN EASEMENT
- BUILDING LINE
- SURVEY LINE
- SITE B.M. ELEV. = 171.75'
- BRASS CAP SET IN CONCRETE
- 25' NAD WEST TIE TO SAN BERNARD R.O.W. OF FAIR WEATHER FIELD DRIVE FROM THE INTERSECTION WITH THE SOUTHWEST CORNER OF FM 539
- OVERHEAD POWER LINES
- POWER POLE
- GUY WIRE
- () DEED CALL

NOTE:
Reference B.M. USCGS BRASS DISK Stamped A 1026 1954
Located at the SW Intersection FM 529 and FM 362.
Elev. = 203.68 Ft. NAVD 1988, 2001 Adj.

Owner - Developer

Aviation Estates, Ltd.
Leonard F. Firth, General Partner
P.O. Box 1418
Brookshire, Waller County, Texas 77423
1-281-702-3331
www.windsock6@yahoo.com

COMPILED BY
A-SURVEY
INCORPORATED
19 NORTH MILLER
BELLVILLE, TEXAS 77418
1-979-865-8111
1-979-865-5086 (FAX)
1-800-4-A-SURVEY
ASURVEY@a-survey.com
PROJECT No.: 10139AF22
SHT. 1 OF 3

H. H. PENNINGTON SURVEY, A-323

H. & T.C.R.R. Co. SURVEY Sec. 2, A-184