

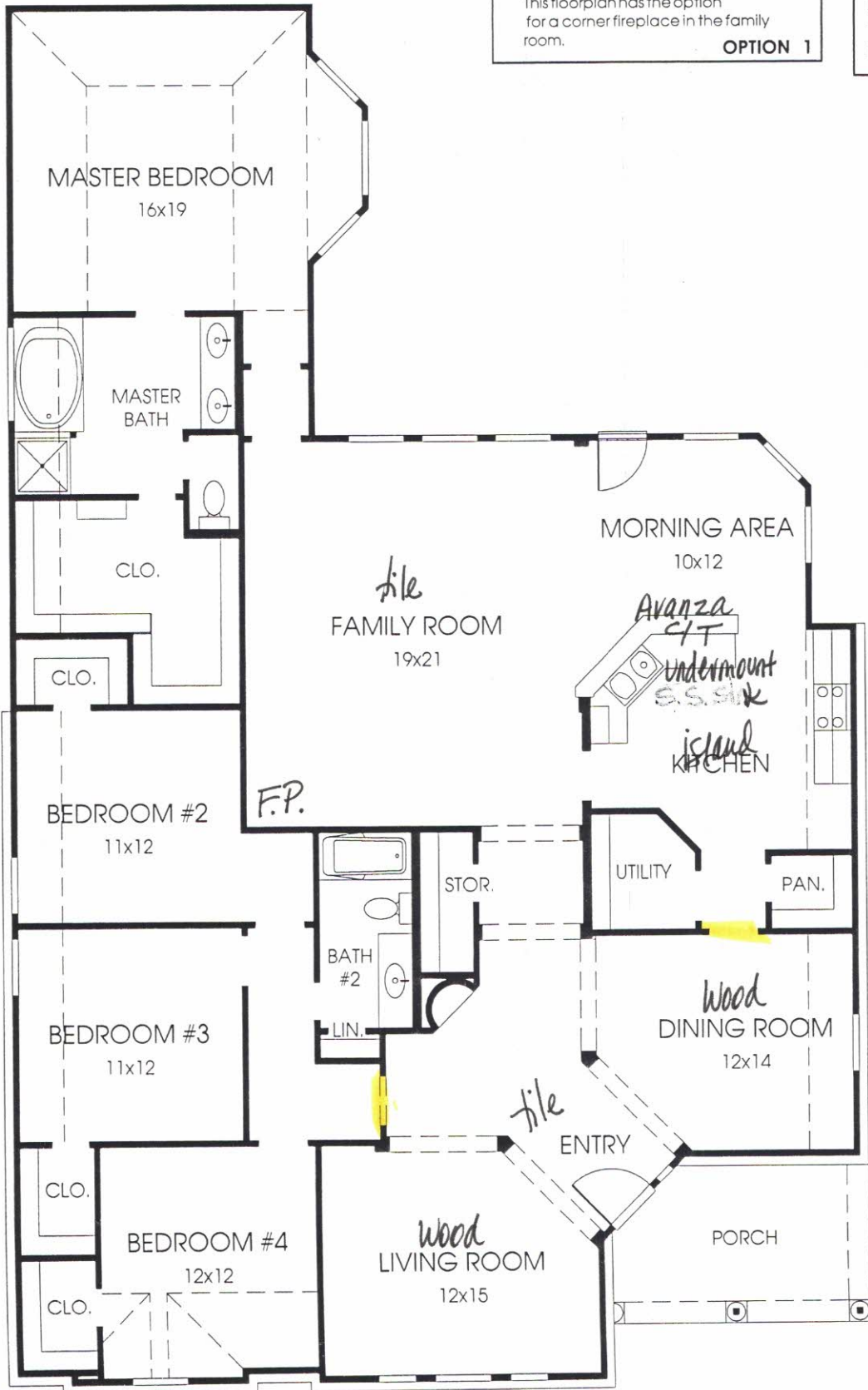
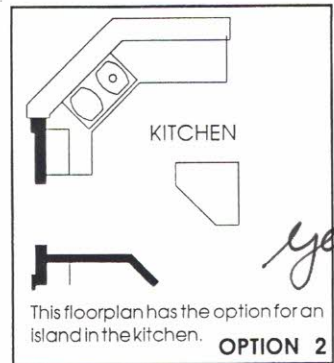
DESIGNS

Plan 2590W

This home contains approximately 2,590 square feet and includes four bedrooms and two baths.

Corner lot
side-load garage w/ 5' rear extension

13919 Prospect Point Drive
Coles Crossing
Section 17



"Brownstone" skin cabinets

Note: The Options shown on this brochure are available at an additional cost.

Not included: inside keyed deadbolt locks, refrigerators, furnishings, drapery, plants, decorator items and all other personal property being used in model homes. Builder reserves the right to make changes in the plans and specifications, and to substitute material of similar quality. Room dimensions indicate approximate inside area measurements.

JUNE 2005 © 2005 Perry Homes (CL&CL-W)

PERRY HOMES

