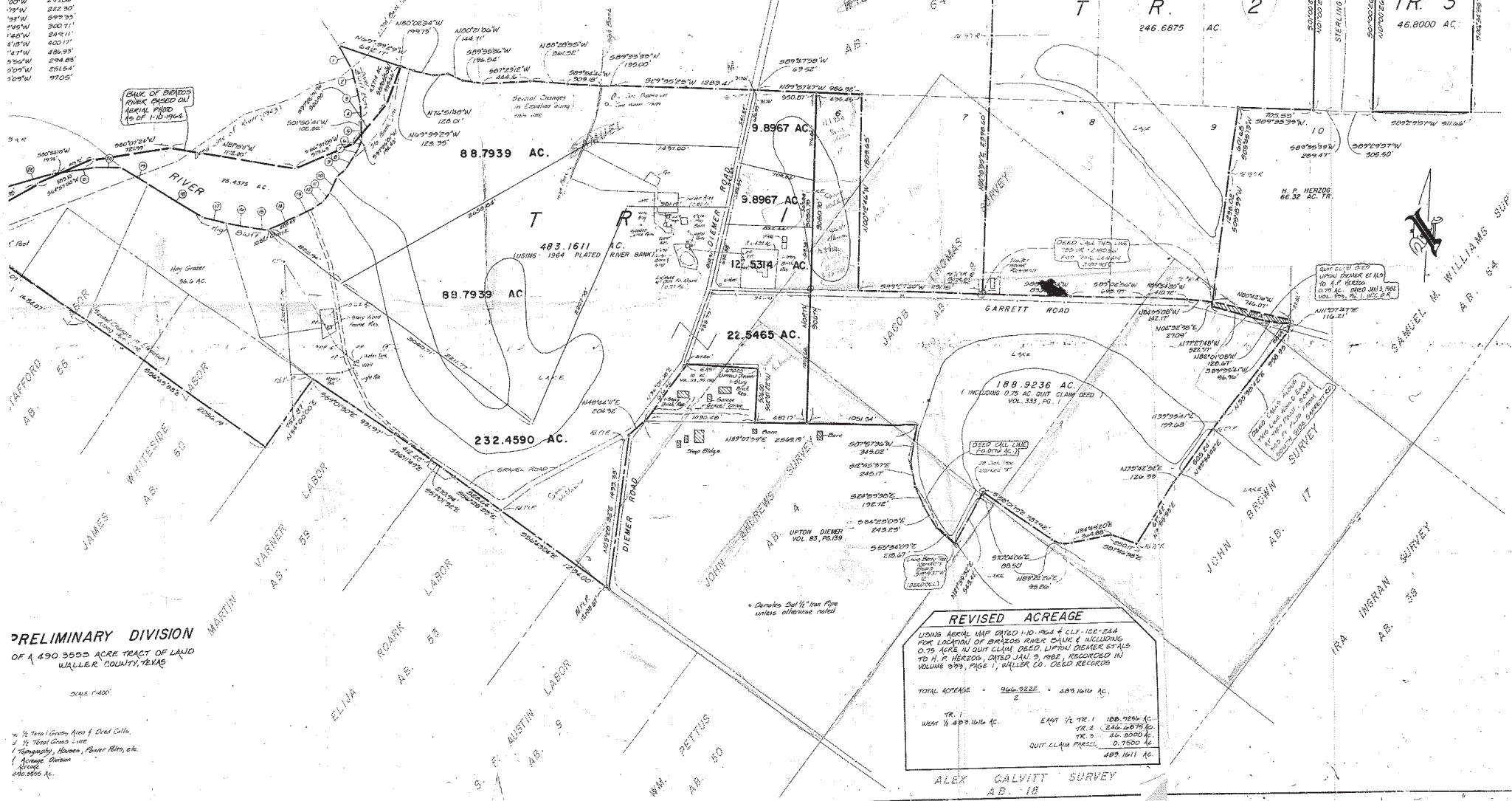


VER MEANDERS

37'E	299.65'
27'E	160.96'
42'E	171.11'
23'E	189.95'
41'W	180.30'
12'W	100.90'
11'W	49.74'
99'W	179.52'
99'W	116.46'
38'W	176.44'
32'W	101.64'
30'W	36.09'
118'W	192.08'
12'W	298.88'
12'W	157.76'
100'W	290.06'
19'W	282.30'
19'W	599.93'
194'W	300.71'
140'W	249.11'
118'W	400.17'
12'W	286.93'
95'W	294.05'
10'W	251.54'
10'W	97.05'

TRACT 1		TRACT 2		TRACT 3	
AS SURVEYED	669.8416 AC.	AS SURVEYED	246.6875 AC.	AS SURVEYED	46.8000 AC.
DEED CALL (1943)	697.20 AC.	DEED CALL (1943)	251.00 AC.	DEED CALL (1943)	46.8000 AC.
RIVER LOSS	- 37.9264 AC.	SHORTAGE ORR CALL	4.3125 AC.		
RIVER GAIN	+ 13.0167 AC.				
SHORTAGE ORR CALL	- 0.4481 AC.				
TOTAL ACRES SURVEYED	957.3291 AC.	TOTAL ACRES SURVEYED	957.3291 AC.	TOTAL ACRES SURVEYED	957.3291 AC.

TRACT 1		TRACT 2	
WEST SIDE ROAD	403.7086 AC. NET	WEST SIDE ROAD	403.7086 AC. NET
EAST SIDE ROAD	244.7723 AC. NET	EAST SIDE ROAD	244.7723 AC. NET
GRAVEL ROAD	2.5975 AC.	GRAVEL ROAD	2.5975 AC.
DIEMER ROAD	5.4169 AC.	DIEMER ROAD	5.4169 AC.
GARRETT ROAD	7.3463 AC.	GARRETT ROAD	7.3463 AC.
TOTAL	669.8416 AC.	TOTAL	669.8416 AC.



PRELIMINARY DIVISION
OF A 490 355 ACRE TRACT OF LAND
WALLER COUNTY, TEXAS

Scale 1"=400'
1/4" = 100' Area 1 Given Area of Deed Calls.
1/4" = Total Gross Area
1" = Homography, Houses, Power Poles, etc.
1" = Average Section
Area
490,355 Ac.

REVISED ACREAGE
USING AERIAL MAP DATED 10-10-1964 & CLF 156-244
FOR LOCATION OF BRIDGES RIVER BANK & INCLUDING
0.75 ACRE IN QUIT CLAIM DEED, UPON DIEMER STALS
TO H. P. HERZOG, DATED JAN 9, 1962, RECORDED IN
VOLUME 999, PAGE 1, WALLER CO. CLERK RECORDS

TOTAL ACREAGE = 490.3552 = 490.1616 AC.

TRACT 1	WEST 1/4 499.1616 AC.	EAST 1/4 TR. 1	188.9236 AC.
TRACT 2	246.6875 AC.	TRACT 3	46.8000 AC.
QUIT CLAIM PARCEL	0.7500 AC.		499.1611 AC.

ALEX CALVITT SURVEY
A.B. 18