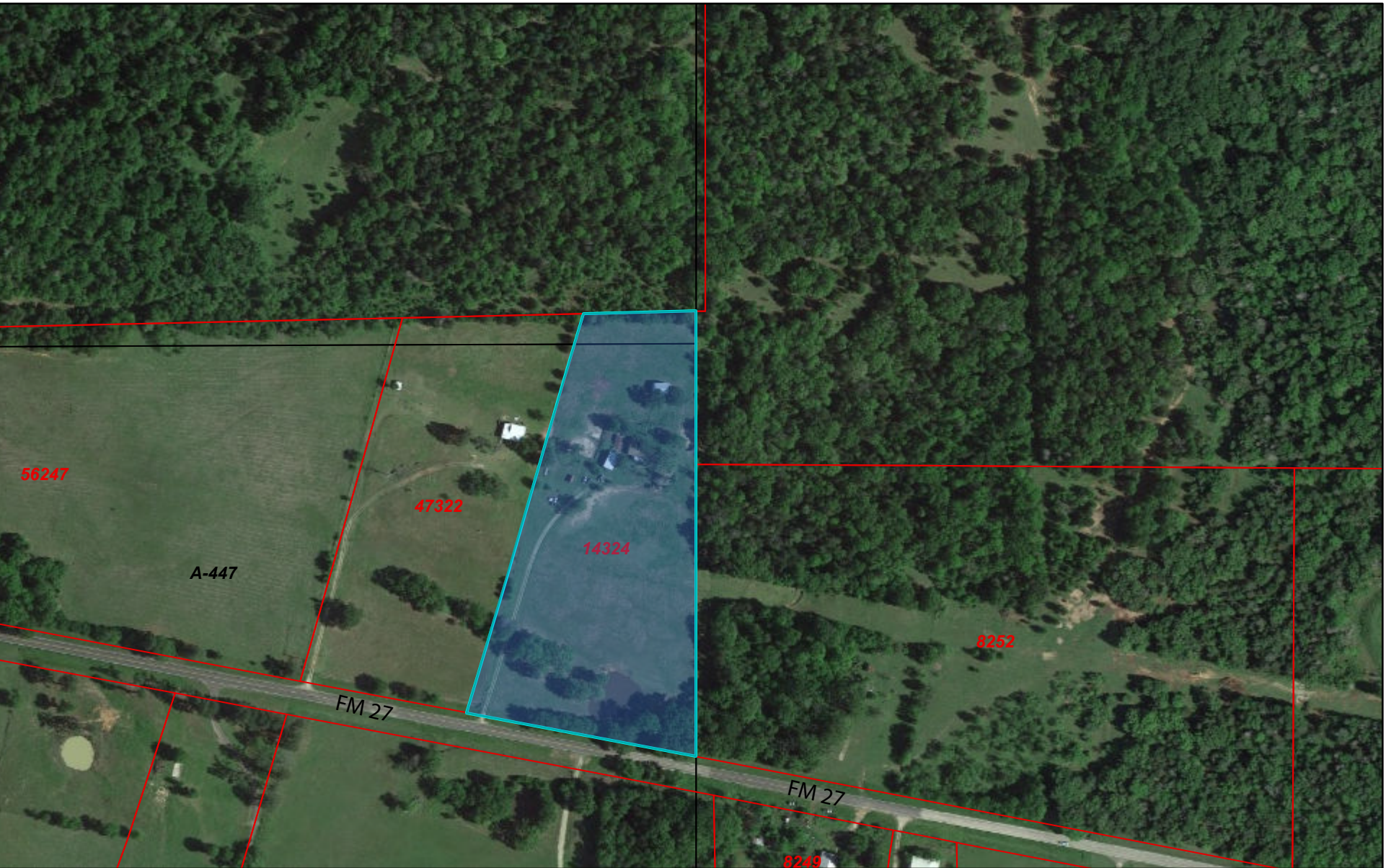

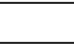
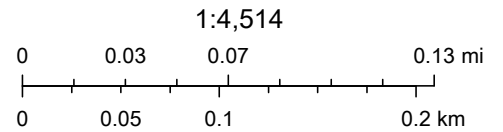


# +/- 9.25 acres, Freestone County



12/10/2020, 11:29:21 AM

-  Parcels
-  Abstracts



© OpenStreetMap (and) contributors, CC-BY-SA

Freestone County Appraisal District, BIS Consulting - [www.bisconsulting.com](http://www.bisconsulting.com)

Disclaimer: This product is for informational purposes only and has not been prepared for or be suitable for legal, engineering, or surveying purposes. It does not represent an on-the-ground survey and represents only the approximate relative location of boundaries.