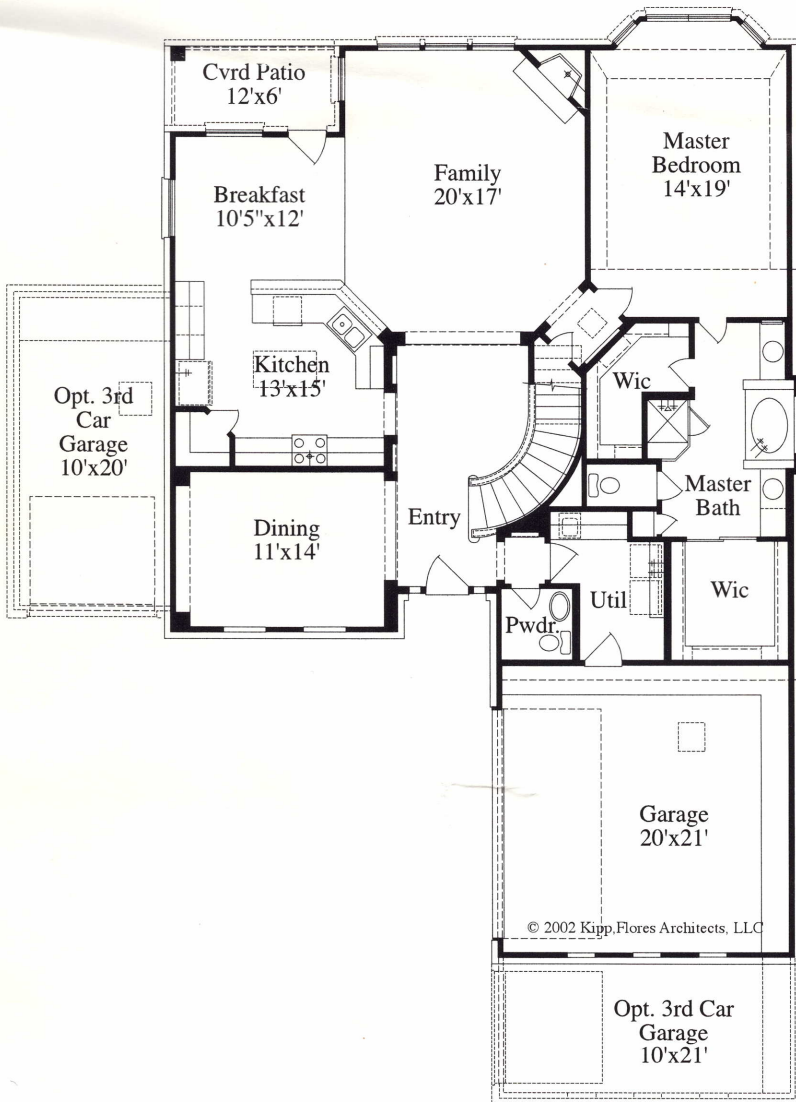


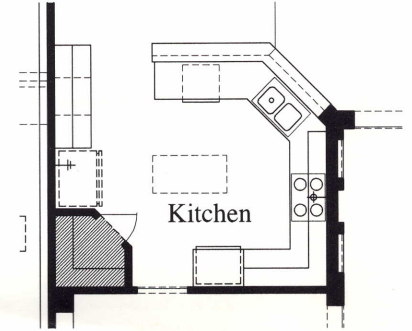


# The Fredericksburg

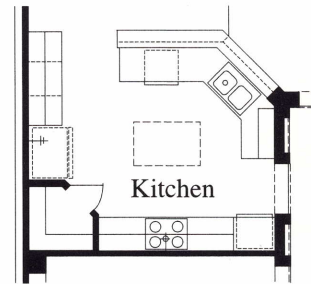
## 3252



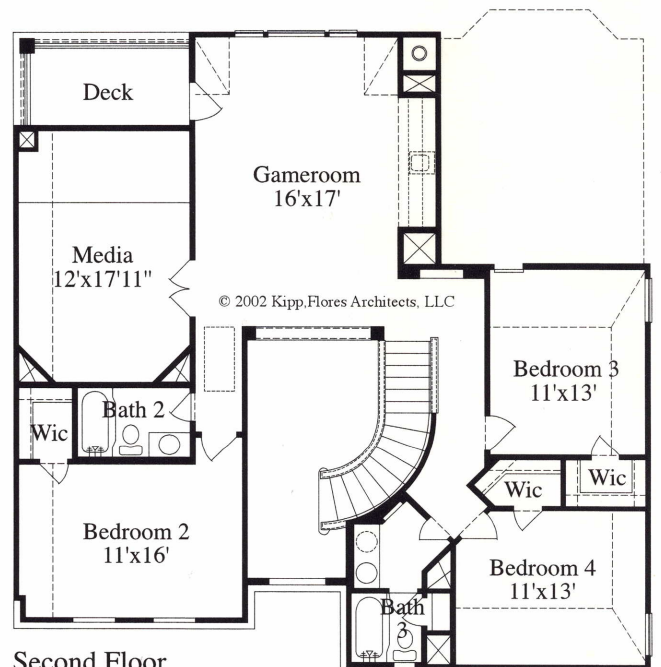
First Floor



Opt. Kitchen 2



Opt. Kitchen



Second Floor

© 2002 Kipp.Flores Architects, LLC

© 2002 Kipp.Flores Architects, LLC

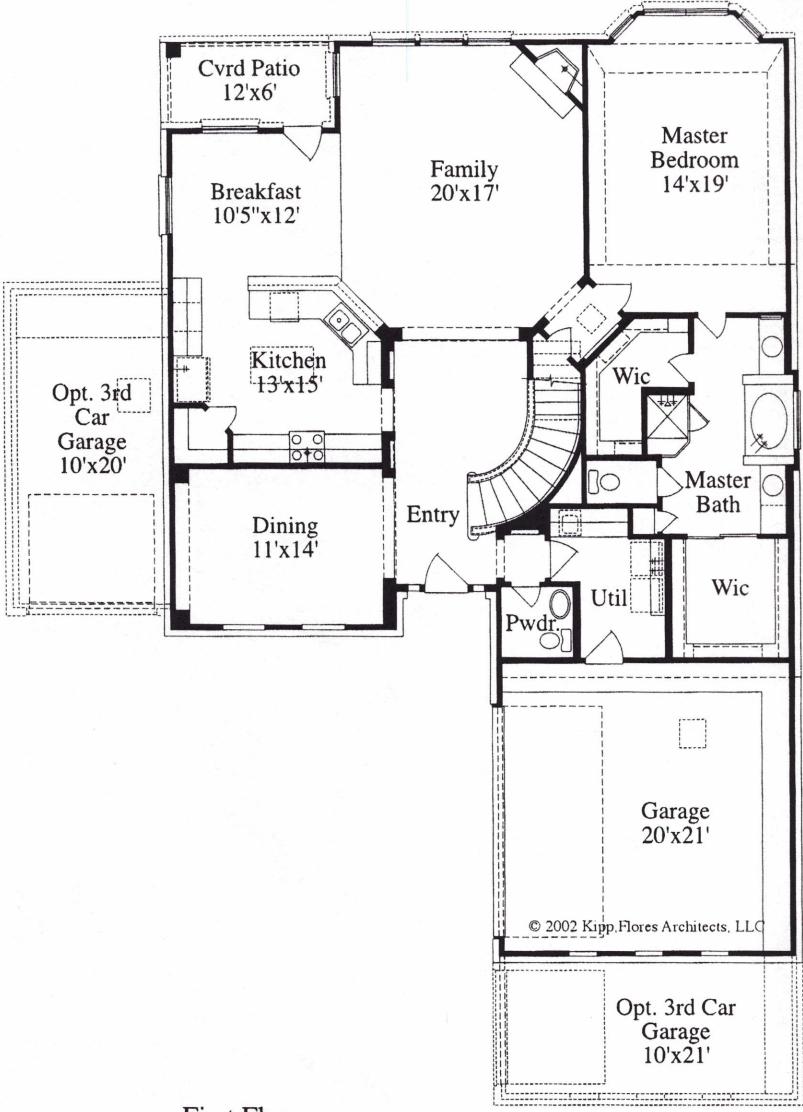
MH 09/07

Room dimensions are approximate and may vary. Prices, products and specifications subject to change without notice. Meritage Homes designs are copyrighted and copyright laws will be enforced to the fullest extent. Photos are representative of Meritage Homes designs and are not necessarily the same as the floor plan shown. Some dotted lines represent optional items.

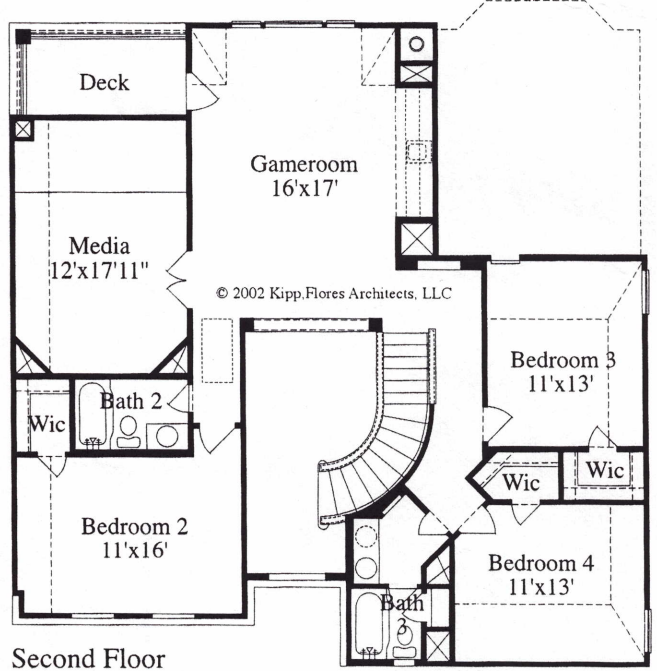
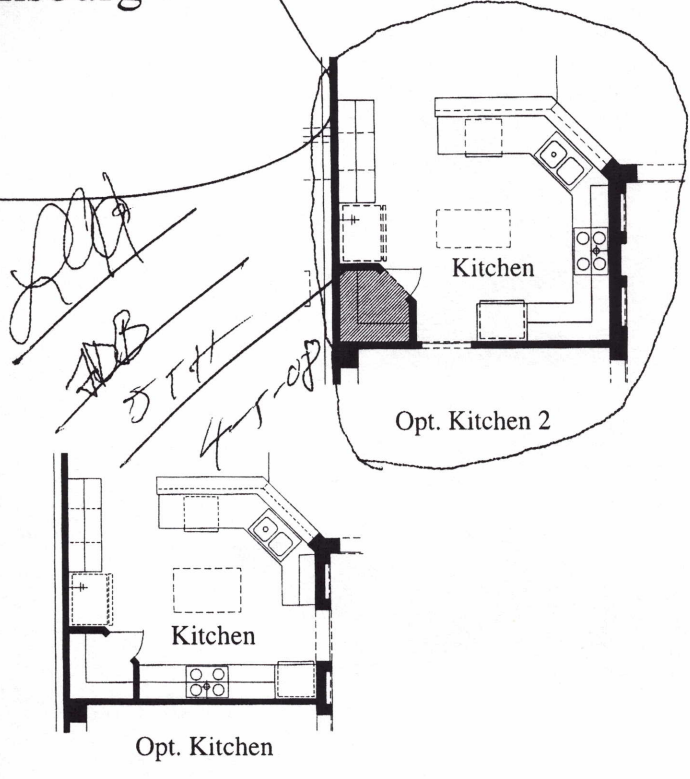




# The Fredericksburg 3252



First Floor



Second Floor

Room dimensions are approximate and may vary. Prices, products and specifications subject to change without notice. Meritage Homes designs are copyrighted and copyright laws will be enforced to the fullest extent. Photos are representative of Meritage Homes designs and are not necessarily the same as the floor plan shown. Some dotted lines represent optional items.

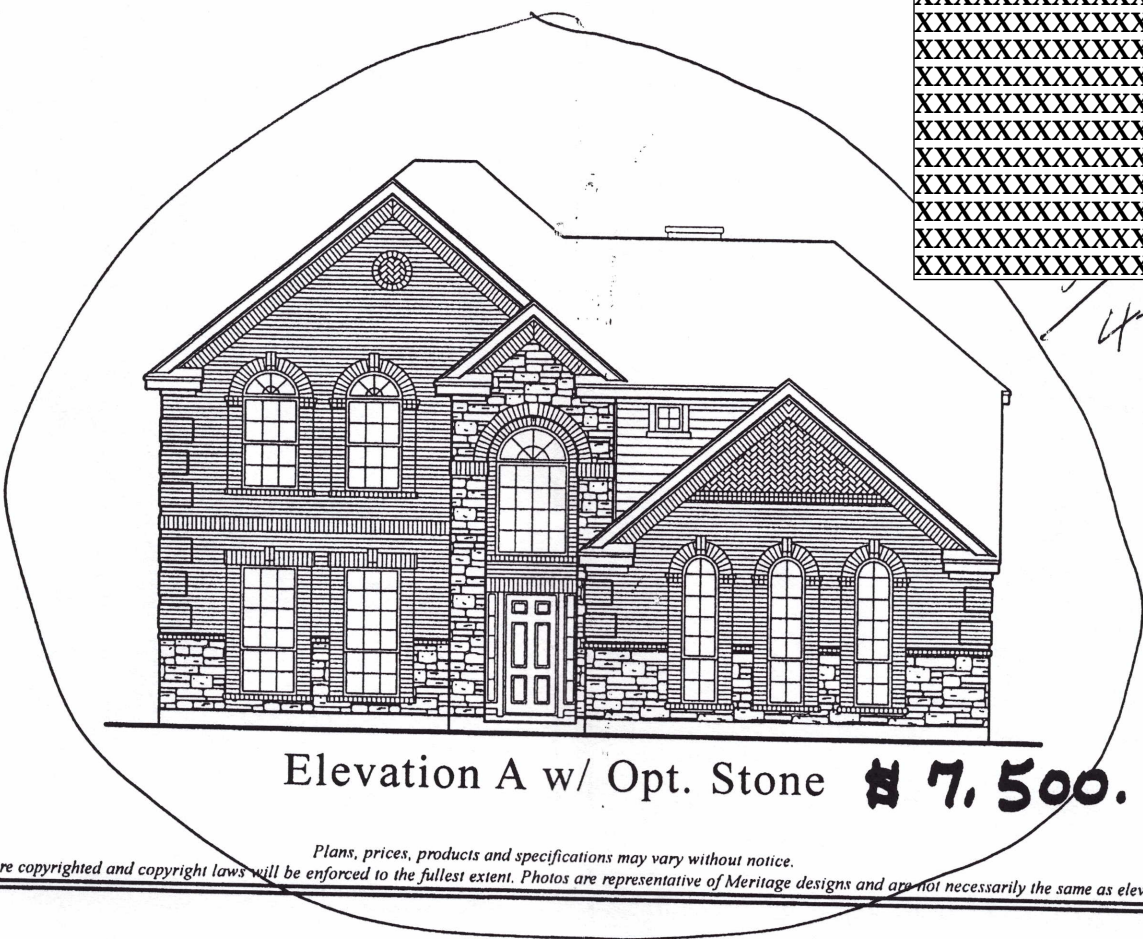
MH 09/07

[www.MeritageHomesTexas.com](http://www.MeritageHomesTexas.com)

The Fredricksburg  
3252



Elevation A **STANDARD**



Elevation A w/ Opt. Stone **\$ 7,500.**

Plans, prices, products and specifications may vary without notice.  
Meritage designs are copyrighted and copyright laws will be enforced to the fullest extent. Photos are representative of Meritage designs and are not necessarily the same as elevations shown.