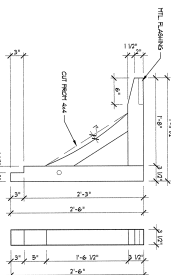


PROFILE

FRONT

AWNING DETAIL
SCALE: 1/8" = 1'-0"

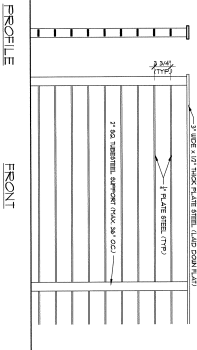
NOTE: AWNING TO BE INSTALLED AT ALL CORNERS AND OPENINGS OF EXTERIOR WALLS. AWNING OPERATION SHALL BE AS SHOWN IN THIS DETAIL. AWNING SHALL BE INSTALLED AT ALL CORNERS AND OPENINGS OF EXTERIOR WALLS. AWNING SHALL BE INSTALLED AT ALL CORNERS AND OPENINGS OF EXTERIOR WALLS. AWNING SHALL BE INSTALLED AT ALL CORNERS AND OPENINGS OF EXTERIOR WALLS.



PROFILE

FRONT

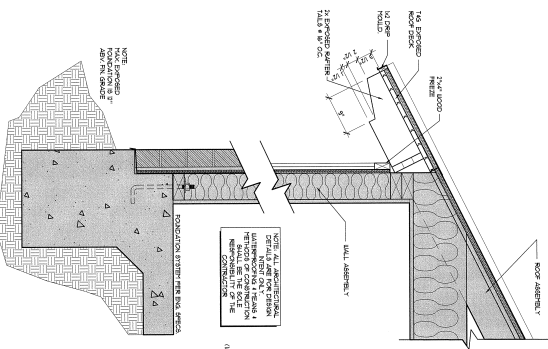
BRACKET DETAIL
SCALE: 1/8" = 1'-0"



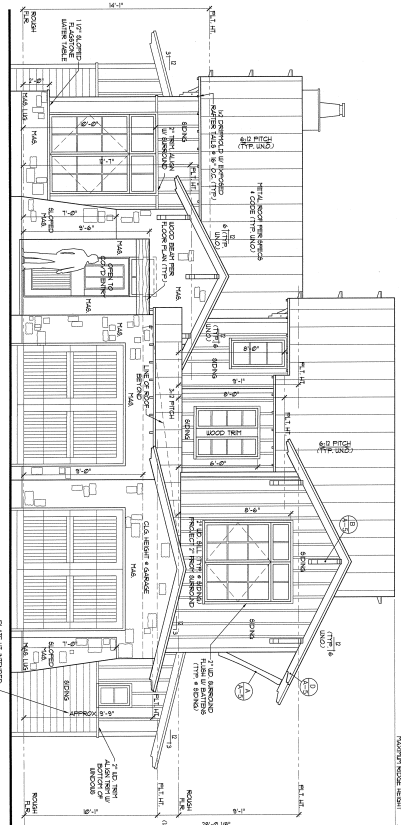
PROFILE

FRONT

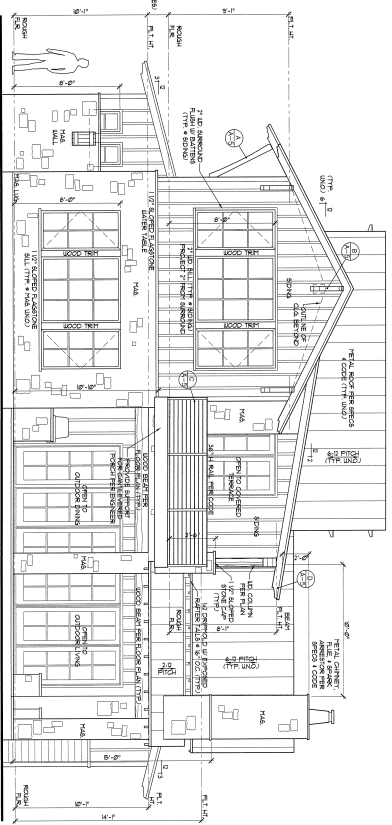
RAIL DETAIL
SCALE: 1/8" = 1'-0"



Drip Eave Detail
SCALE: 1/8" = 1'-0"



FRONT ELEVATION
SCALE: 1/8" = 1'-0"



REAR ELEVATION
SCALE: 1/8" = 1'-0"

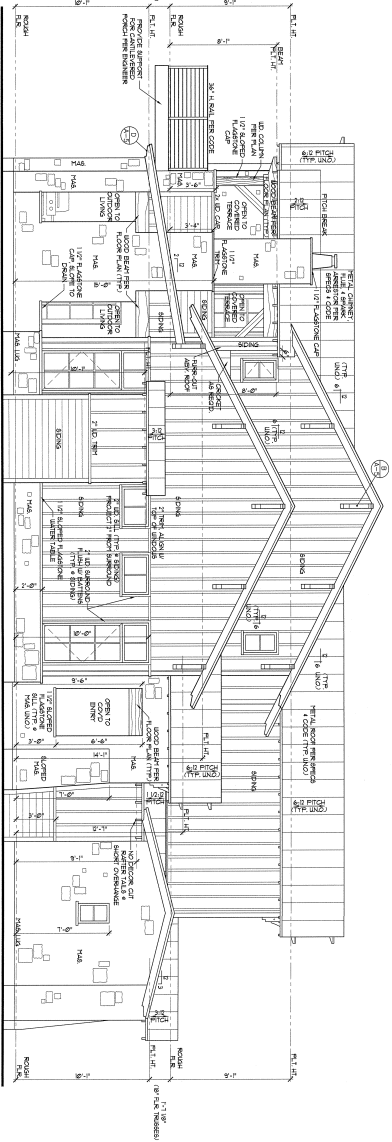
- GENERAL ELEVATION NOTES**
1. ALL ELEVATIONS SHALL BE TO FACE UNLESS NOTED OTHERWISE.
 2. UNLESS NOTED OTHERWISE, ALL DIMENSIONS SHALL BE TO FACE UNLESS NOTED OTHERWISE.
 3. UNLESS NOTED OTHERWISE, ALL DIMENSIONS SHALL BE TO FACE UNLESS NOTED OTHERWISE.
 4. UNLESS NOTED OTHERWISE, ALL DIMENSIONS SHALL BE TO FACE UNLESS NOTED OTHERWISE.
 5. UNLESS NOTED OTHERWISE, ALL DIMENSIONS SHALL BE TO FACE UNLESS NOTED OTHERWISE.
 6. UNLESS NOTED OTHERWISE, ALL DIMENSIONS SHALL BE TO FACE UNLESS NOTED OTHERWISE.
 7. UNLESS NOTED OTHERWISE, ALL DIMENSIONS SHALL BE TO FACE UNLESS NOTED OTHERWISE.
 8. UNLESS NOTED OTHERWISE, ALL DIMENSIONS SHALL BE TO FACE UNLESS NOTED OTHERWISE.
 9. UNLESS NOTED OTHERWISE, ALL DIMENSIONS SHALL BE TO FACE UNLESS NOTED OTHERWISE.
 10. UNLESS NOTED OTHERWISE, ALL DIMENSIONS SHALL BE TO FACE UNLESS NOTED OTHERWISE.

cornerstone
ARCHITECTS, P.C.
12315
12315
12315

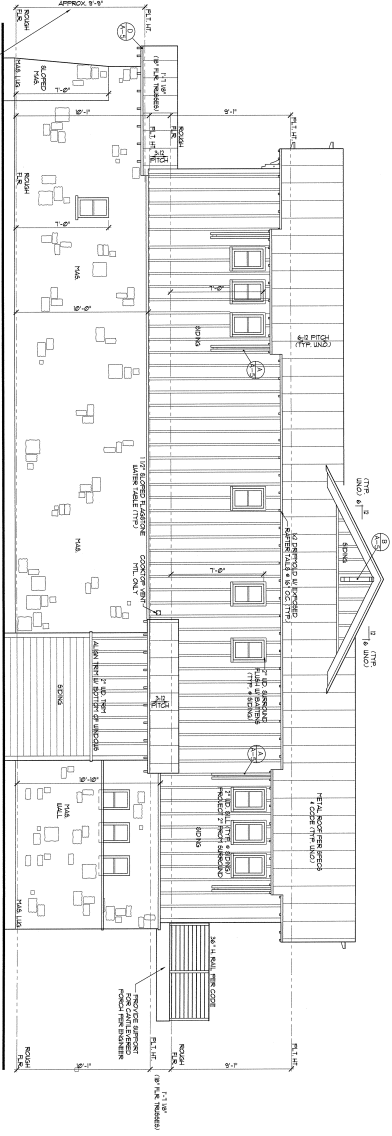
KAYLIE RESIDENCE
RESERVE 0.11
12315
12315
12315

SHEET
A-5
5 OF 14
12315
12315
12315

PROJECT NAME:
12315
12315
12315



LEFT ELEVATION



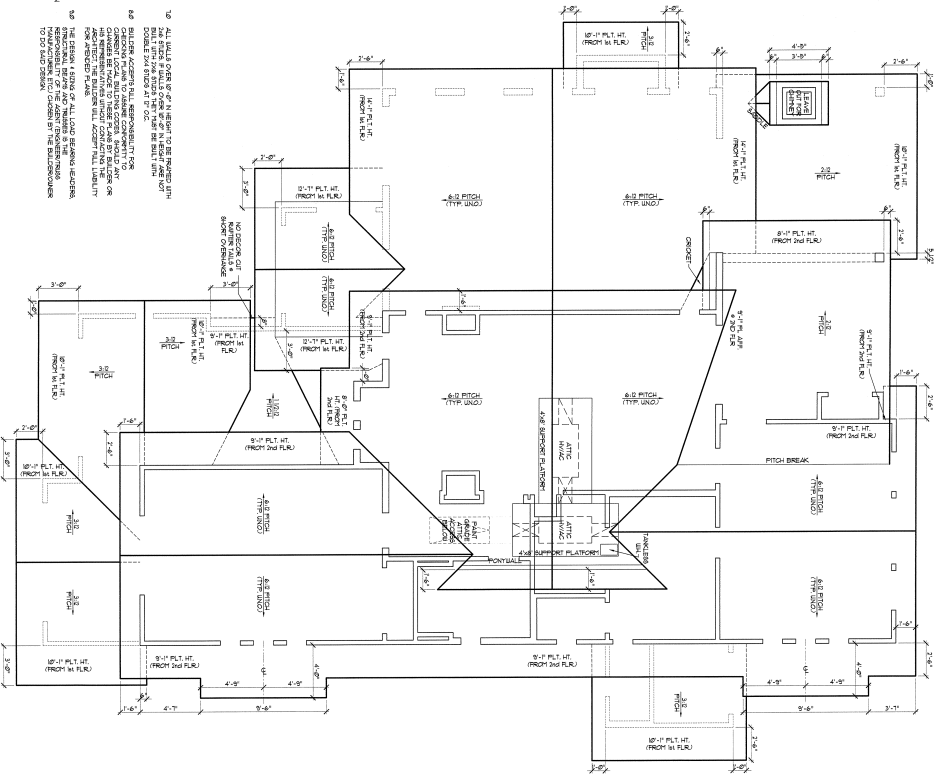
RIGHT ELEVATION

cornerstone
 ARCHITECTURAL FIRM
 12345 MAIN STREET
 SUITE 100
 DALLAS, TEXAS 75201
 TEL: 214-555-1234
 FAX: 214-555-5678
 WWW.CORNERSTONE-ARCH.COM

PROFESSIONAL SEAL
 STATE OF TEXAS
 ARCHITECT
 NO. 12345
 EXPIRES 12/31/15

DATE: 12/31/15
 PROJECT: 12345
 SHEET: A-6
 OF: 14

PROJECT: 12345
 DATE: 12/31/15
 PROJECT: 12345
 PROJECT: 12345

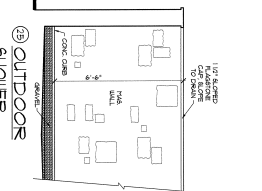
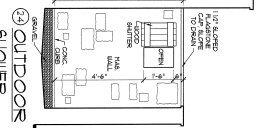
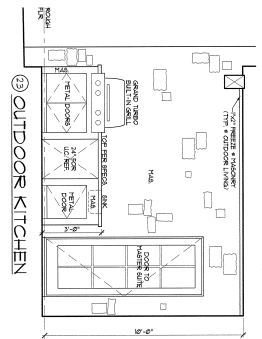
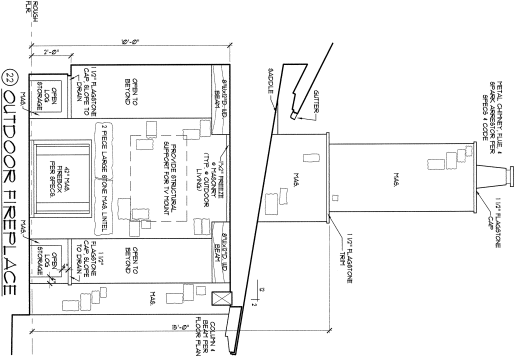
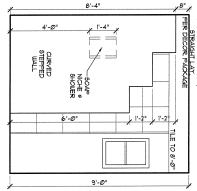
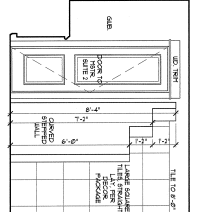
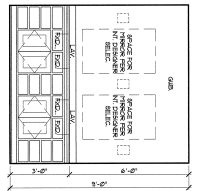
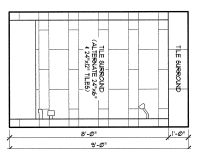
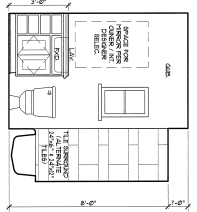
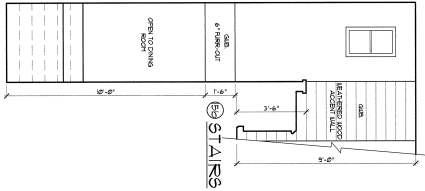


ROOF PLAN
SCALE: 1/8" = 1'-0"

- GENERAL ROOF NOTES**
- 10 FINISHED TO BE AS NOTED ON PLAN.
 - 11 UNLESS OTHERWISE NOTED, ALL DIMENSIONS ARE TO FACE UNLESS OTHERWISE NOTED.
 - 12 UNLESS OTHERWISE NOTED, ALL DIMENSIONS ARE TO FACE UNLESS OTHERWISE NOTED.
 - 13 UNLESS OTHERWISE NOTED, ALL DIMENSIONS ARE TO FACE UNLESS OTHERWISE NOTED.
 - 14 UNLESS OTHERWISE NOTED, ALL DIMENSIONS ARE TO FACE UNLESS OTHERWISE NOTED.
 - 15 UNLESS OTHERWISE NOTED, ALL DIMENSIONS ARE TO FACE UNLESS OTHERWISE NOTED.
 - 16 UNLESS OTHERWISE NOTED, ALL DIMENSIONS ARE TO FACE UNLESS OTHERWISE NOTED.
 - 17 UNLESS OTHERWISE NOTED, ALL DIMENSIONS ARE TO FACE UNLESS OTHERWISE NOTED.
 - 18 UNLESS OTHERWISE NOTED, ALL DIMENSIONS ARE TO FACE UNLESS OTHERWISE NOTED.
 - 19 UNLESS OTHERWISE NOTED, ALL DIMENSIONS ARE TO FACE UNLESS OTHERWISE NOTED.
 - 20 UNLESS OTHERWISE NOTED, ALL DIMENSIONS ARE TO FACE UNLESS OTHERWISE NOTED.
 - 21 UNLESS OTHERWISE NOTED, ALL DIMENSIONS ARE TO FACE UNLESS OTHERWISE NOTED.
 - 22 UNLESS OTHERWISE NOTED, ALL DIMENSIONS ARE TO FACE UNLESS OTHERWISE NOTED.
 - 23 UNLESS OTHERWISE NOTED, ALL DIMENSIONS ARE TO FACE UNLESS OTHERWISE NOTED.
 - 24 UNLESS OTHERWISE NOTED, ALL DIMENSIONS ARE TO FACE UNLESS OTHERWISE NOTED.
 - 25 UNLESS OTHERWISE NOTED, ALL DIMENSIONS ARE TO FACE UNLESS OTHERWISE NOTED.
 - 26 UNLESS OTHERWISE NOTED, ALL DIMENSIONS ARE TO FACE UNLESS OTHERWISE NOTED.
 - 27 UNLESS OTHERWISE NOTED, ALL DIMENSIONS ARE TO FACE UNLESS OTHERWISE NOTED.
 - 28 UNLESS OTHERWISE NOTED, ALL DIMENSIONS ARE TO FACE UNLESS OTHERWISE NOTED.
 - 29 UNLESS OTHERWISE NOTED, ALL DIMENSIONS ARE TO FACE UNLESS OTHERWISE NOTED.
 - 30 UNLESS OTHERWISE NOTED, ALL DIMENSIONS ARE TO FACE UNLESS OTHERWISE NOTED.
 - 31 UNLESS OTHERWISE NOTED, ALL DIMENSIONS ARE TO FACE UNLESS OTHERWISE NOTED.
 - 32 UNLESS OTHERWISE NOTED, ALL DIMENSIONS ARE TO FACE UNLESS OTHERWISE NOTED.
 - 33 UNLESS OTHERWISE NOTED, ALL DIMENSIONS ARE TO FACE UNLESS OTHERWISE NOTED.
 - 34 UNLESS OTHERWISE NOTED, ALL DIMENSIONS ARE TO FACE UNLESS OTHERWISE NOTED.
 - 35 UNLESS OTHERWISE NOTED, ALL DIMENSIONS ARE TO FACE UNLESS OTHERWISE NOTED.
 - 36 UNLESS OTHERWISE NOTED, ALL DIMENSIONS ARE TO FACE UNLESS OTHERWISE NOTED.
 - 37 UNLESS OTHERWISE NOTED, ALL DIMENSIONS ARE TO FACE UNLESS OTHERWISE NOTED.
 - 38 UNLESS OTHERWISE NOTED, ALL DIMENSIONS ARE TO FACE UNLESS OTHERWISE NOTED.
 - 39 UNLESS OTHERWISE NOTED, ALL DIMENSIONS ARE TO FACE UNLESS OTHERWISE NOTED.
 - 40 UNLESS OTHERWISE NOTED, ALL DIMENSIONS ARE TO FACE UNLESS OTHERWISE NOTED.
 - 41 UNLESS OTHERWISE NOTED, ALL DIMENSIONS ARE TO FACE UNLESS OTHERWISE NOTED.
 - 42 UNLESS OTHERWISE NOTED, ALL DIMENSIONS ARE TO FACE UNLESS OTHERWISE NOTED.
 - 43 UNLESS OTHERWISE NOTED, ALL DIMENSIONS ARE TO FACE UNLESS OTHERWISE NOTED.
 - 44 UNLESS OTHERWISE NOTED, ALL DIMENSIONS ARE TO FACE UNLESS OTHERWISE NOTED.
 - 45 UNLESS OTHERWISE NOTED, ALL DIMENSIONS ARE TO FACE UNLESS OTHERWISE NOTED.
 - 46 UNLESS OTHERWISE NOTED, ALL DIMENSIONS ARE TO FACE UNLESS OTHERWISE NOTED.
 - 47 UNLESS OTHERWISE NOTED, ALL DIMENSIONS ARE TO FACE UNLESS OTHERWISE NOTED.
 - 48 UNLESS OTHERWISE NOTED, ALL DIMENSIONS ARE TO FACE UNLESS OTHERWISE NOTED.
 - 49 UNLESS OTHERWISE NOTED, ALL DIMENSIONS ARE TO FACE UNLESS OTHERWISE NOTED.
 - 50 UNLESS OTHERWISE NOTED, ALL DIMENSIONS ARE TO FACE UNLESS OTHERWISE NOTED.

cornerstone
ARCHITECTS
1000 W. 10TH AVENUE
SUITE 100
DENVER, CO 80202
TEL: 303.733.1111
WWW.CORNERSTONEARCHITECTS.COM

PROJECT: EXAMINER RESIDENCE
DATE: 12/15/15
SCALE: 1/8" = 1'-0"
SHEET: 7 OF 14
NO.: 12315



GENERAL NOTES

1. ALL DIMENSIONS ARE TO FACE UNLESS NOTED OTHERWISE.

2. FINISHES TO BE MATCHED TO EXISTING FINISHES UNLESS NOTED OTHERWISE.

3. MATERIALS TO BE MATCHED TO EXISTING MATERIALS UNLESS NOTED OTHERWISE.

4. ALL WORK TO BE DONE IN ACCORDANCE WITH THE LATEST EDITIONS OF THE INTERNATIONAL RESIDENTIAL CODE BOOK AND THE NATIONAL ELECTRICAL CODE.

5. ALL WORK TO BE DONE IN ACCORDANCE WITH THE LATEST EDITIONS OF THE INTERNATIONAL RESIDENTIAL CODE BOOK AND THE NATIONAL ELECTRICAL CODE.

6. ALL WORK TO BE DONE IN ACCORDANCE WITH THE LATEST EDITIONS OF THE INTERNATIONAL RESIDENTIAL CODE BOOK AND THE NATIONAL ELECTRICAL CODE.

7. ALL WORK TO BE DONE IN ACCORDANCE WITH THE LATEST EDITIONS OF THE INTERNATIONAL RESIDENTIAL CODE BOOK AND THE NATIONAL ELECTRICAL CODE.

8. ALL WORK TO BE DONE IN ACCORDANCE WITH THE LATEST EDITIONS OF THE INTERNATIONAL RESIDENTIAL CODE BOOK AND THE NATIONAL ELECTRICAL CODE.

9. ALL WORK TO BE DONE IN ACCORDANCE WITH THE LATEST EDITIONS OF THE INTERNATIONAL RESIDENTIAL CODE BOOK AND THE NATIONAL ELECTRICAL CODE.

10. ALL WORK TO BE DONE IN ACCORDANCE WITH THE LATEST EDITIONS OF THE INTERNATIONAL RESIDENTIAL CODE BOOK AND THE NATIONAL ELECTRICAL CODE.

11. PROVIDE WITH KEYS AS REQUIRED FOR ALL LOCKS AND DOORS.

12. PROVIDE WITH KEYS AS REQUIRED FOR ALL LOCKS AND DOORS.

13. PROVIDE WITH KEYS AS REQUIRED FOR ALL LOCKS AND DOORS.

14. PROVIDE WITH KEYS AS REQUIRED FOR ALL LOCKS AND DOORS.

15. PROVIDE WITH KEYS AS REQUIRED FOR ALL LOCKS AND DOORS.

16. PROVIDE WITH KEYS AS REQUIRED FOR ALL LOCKS AND DOORS.

17. PROVIDE WITH KEYS AS REQUIRED FOR ALL LOCKS AND DOORS.

18. PROVIDE WITH KEYS AS REQUIRED FOR ALL LOCKS AND DOORS.

19. PROVIDE WITH KEYS AS REQUIRED FOR ALL LOCKS AND DOORS.

20. PROVIDE WITH KEYS AS REQUIRED FOR ALL LOCKS AND DOORS.

21. PROVIDE WITH KEYS AS REQUIRED FOR ALL LOCKS AND DOORS.

22. PROVIDE WITH KEYS AS REQUIRED FOR ALL LOCKS AND DOORS.

23. PROVIDE WITH KEYS AS REQUIRED FOR ALL LOCKS AND DOORS.

24. PROVIDE WITH KEYS AS REQUIRED FOR ALL LOCKS AND DOORS.

25. PROVIDE WITH KEYS AS REQUIRED FOR ALL LOCKS AND DOORS.

26. PROVIDE WITH KEYS AS REQUIRED FOR ALL LOCKS AND DOORS.

27. PROVIDE WITH KEYS AS REQUIRED FOR ALL LOCKS AND DOORS.

28. PROVIDE WITH KEYS AS REQUIRED FOR ALL LOCKS AND DOORS.

29. PROVIDE WITH KEYS AS REQUIRED FOR ALL LOCKS AND DOORS.

30. PROVIDE WITH KEYS AS REQUIRED FOR ALL LOCKS AND DOORS.

31. PROVIDE WITH KEYS AS REQUIRED FOR ALL LOCKS AND DOORS.

32. PROVIDE WITH KEYS AS REQUIRED FOR ALL LOCKS AND DOORS.

33. PROVIDE WITH KEYS AS REQUIRED FOR ALL LOCKS AND DOORS.

34. PROVIDE WITH KEYS AS REQUIRED FOR ALL LOCKS AND DOORS.

35. PROVIDE WITH KEYS AS REQUIRED FOR ALL LOCKS AND DOORS.

36. PROVIDE WITH KEYS AS REQUIRED FOR ALL LOCKS AND DOORS.

37. PROVIDE WITH KEYS AS REQUIRED FOR ALL LOCKS AND DOORS.

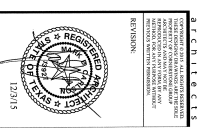
38. PROVIDE WITH KEYS AS REQUIRED FOR ALL LOCKS AND DOORS.

39. PROVIDE WITH KEYS AS REQUIRED FOR ALL LOCKS AND DOORS.

40. PROVIDE WITH KEYS AS REQUIRED FOR ALL LOCKS AND DOORS.

INTERIOR ELEVATIONS

SCALE: 1/8" = 1'-0"



cornerstone

ARCHITECTURE

12345 MAIN STREET

ANNAPOLIS, MD 21403

TEL: 410-261-1234

FAX: 410-261-5678

WWW.CORNERSTONEARCHITECTURE.COM

DAVID H. BISHOP

REGISTERED PROFESSIONAL ARCHITECT

NO. 12345

STATE OF MARYLAND

12/31/15

PROJECT INFORMATION

PROJECT NAME: [REDACTED]

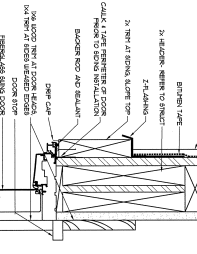
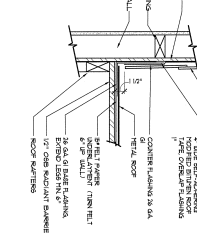
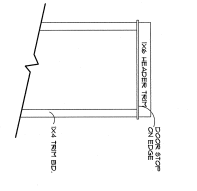
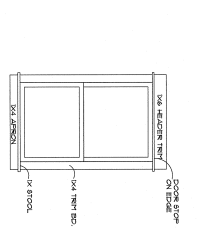
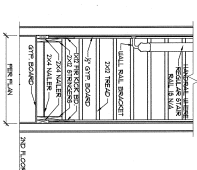
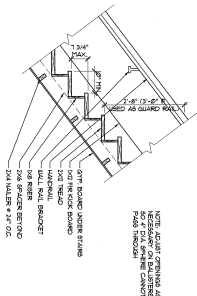
PROJECT ADDRESS: [REDACTED]

PROJECT DATE: [REDACTED]

PROJECT NO.: [REDACTED]

REVISIONS

NO.	DATE	DESCRIPTION
1	12/31/15	ISSUED FOR PERMIT



1 STAIR SECTION
SCALE: 1/4\"/>

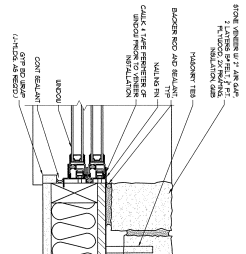
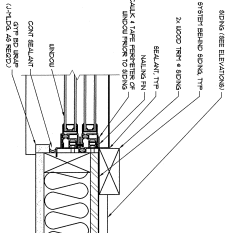
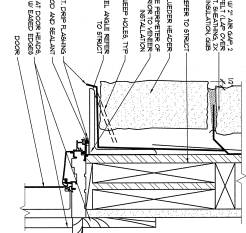
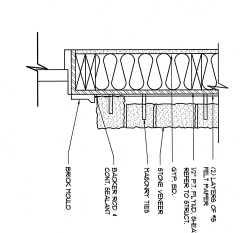
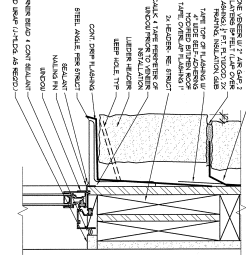
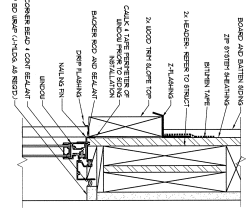
2 STAIR SECTION
SCALE: 1/4\"/>

3 INT. WINDOW TRIM (TYPE 1)
SCALE: 1/4\"/>

4 INT. DOOR TRIM (TYPE 1)
SCALE: 1/4\"/>

5 WALL TO ROOF FLASHING
SCALE: 1/4\"/>

6 SWING DOOR HEAD
SCALE: 1/4\"/>



7 WINDOW HEAD
SCALE: 1/4\"/>

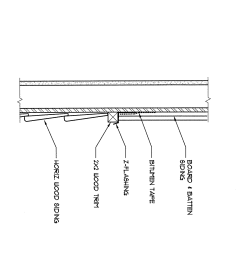
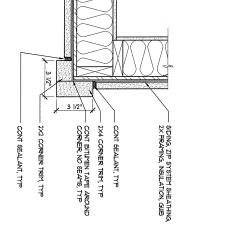
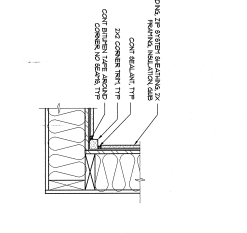
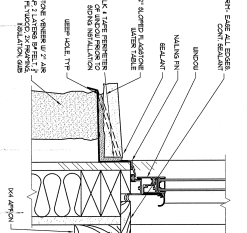
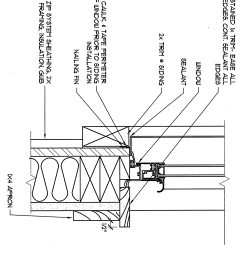
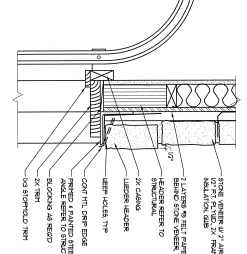
8 WINDOW HEAD
SCALE: 1/4\"/>

9 SWING DOOR JAMB
SCALE: 1/4\"/>

10 SWING DOOR HEAD
SCALE: 1/4\"/>

11 WINDOW JAMB
SCALE: 1/4\"/>

12 WINDOW JAMB
SCALE: 1/4\"/>



13 GARAGE HEAD
SCALE: 1/4\"/>

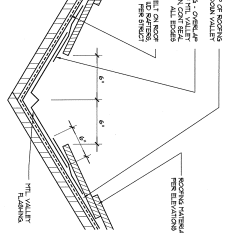
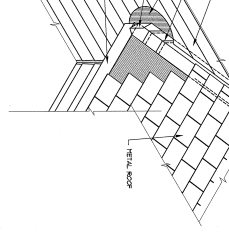
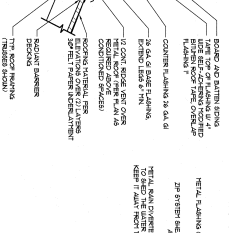
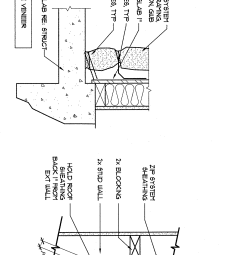
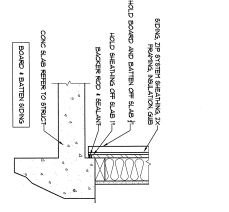
14 WINDOW SILL
SCALE: 1/4\"/>

15 WINDOW SILL
SCALE: 1/4\"/>

16 INSIDE CORNER TRIM
SCALE: 1/4\"/>

17 OUTSIDE CORNER TRIM
SCALE: 1/4\"/>

18 TRANSITION DETAIL
SCALE: 1/4\"/>



19 ENTRY LEVEL DETAIL
SCALE: 1/4\"/>

20 WALL TO ROOF FLASHING
SCALE: 1/4\"/>

21 ROOF WALL INTERSECTION
SCALE: 1/4\"/>

22 VALLEY FLASHING
SCALE: 1/4\"/>

NOTE: SEE DETAIL SCHEDULES AND SPECIFICATIONS FOR MATERIALS AND FINISHES. THIS DETAIL IS SUBJECT TO CHANGE WITHOUT NOTICE. THE CONTRACTOR SHALL BE RESPONSIBLE FOR OBTAINING ALL NECESSARY PERMITS AND APPROVALS. THE CONTRACTOR SHALL BE RESPONSIBLE FOR OBTAINING ALL NECESSARY PERMITS AND APPROVALS. THE CONTRACTOR SHALL BE RESPONSIBLE FOR OBTAINING ALL NECESSARY PERMITS AND APPROVALS.

CG PARTNERS

CORNERSTONE GROUP ARCHITECTS

1105 WEST 11th Street, Suite 1000, Vancouver, BC V6H 2T6
 604-681-1111
 www.cornerstonegroup.com

RAFAEL RESNINE
 ARCHITECT
 107/15
 1105 WEST 11th Street, Suite 1000, Vancouver, BC V6H 2T6
 604-681-1111
 www.cornerstonegroup.com

D-1

11 OF 14
 1105 WEST 11th Street, Suite 1000, Vancouver, BC V6H 2T6
 604-681-1111
 www.cornerstonegroup.com

