

IMPROVEMENTS IN SE
JULY 31, 1997

BENTWATER

SECTION FIFTY FOUR

BEING A SUBDIVISION OF 4.5088 ACRES
IN THE OWEN SHANNON SURVEY, A-36
MONTGOMERY COUNTY, TEXAS
14 LOTS 1 BLOCK 0 RESERVES

ENGINEER:
CENTURY ENGINEERING, INC.
3030 SOUTH GESSNER, SUITE 100, HOUSTON, TEXAS 77063

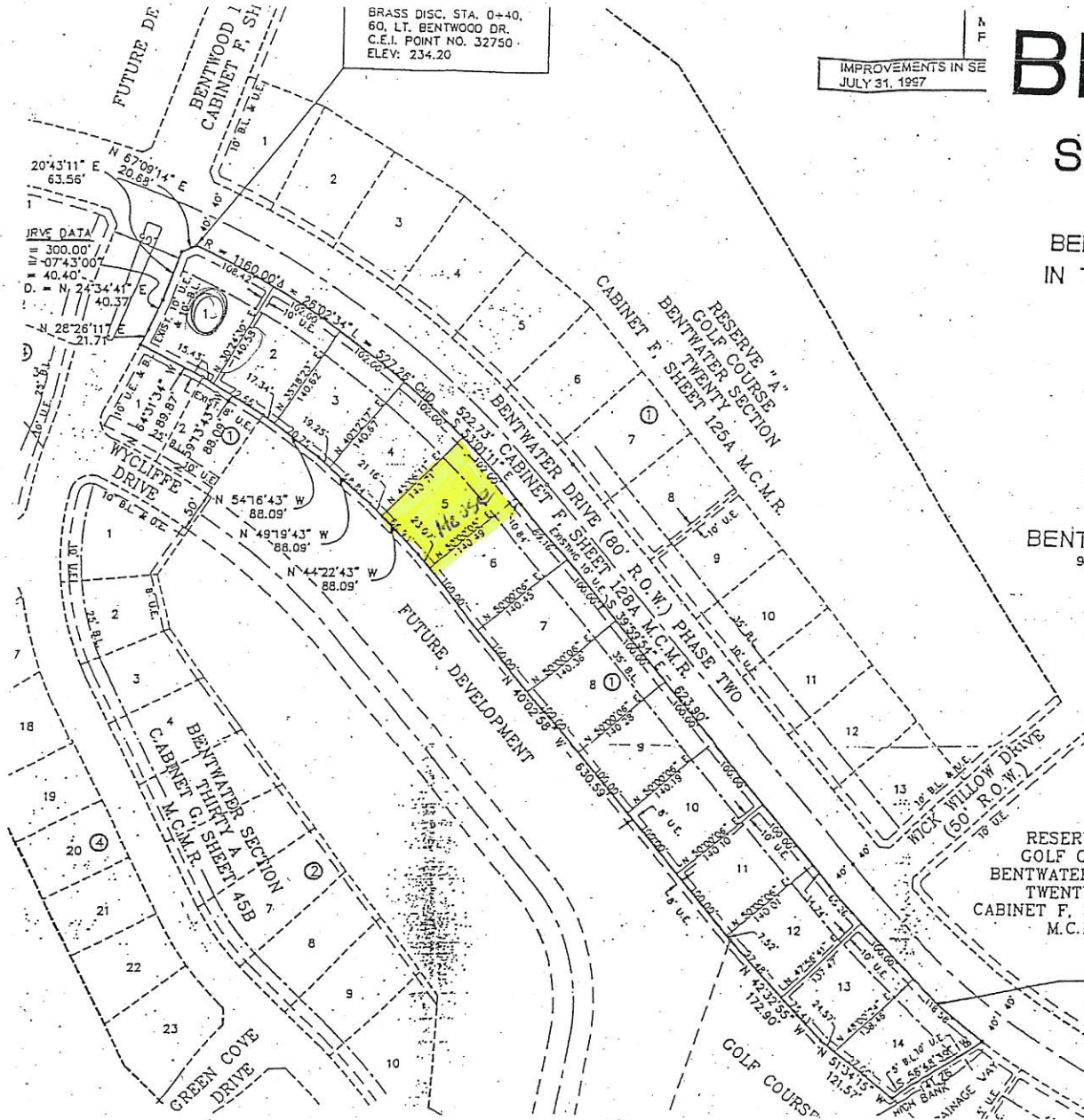
DEVELOPER:
BENTWATER ON THE NORTH SHORE, LTD.
9800 CENTRE PARKWAY, SUITE 540, HOUSTON, TEXAS 77036

BEING A
IN THE C
MON

RESERVE "A"
GOLF COURSE
BENTWATER SECTION
TWENTY ONE
CABINET F, SHEET 126B
M.C.M.R.

CURVE DATA

R = 1240.00
Δ = 13°06'55"
L = 283.84'
CHD. = S 46°33'22" E
283.22'



BRASS DISC. STA. 0+40,
60, LT. BENTWAGO DR.
C.E.I. POINT NO. 32750
ELEV: 234.20

IRVING DATA
R = 300.00'
Δ = 074°3'00"
L = 40.40'
D. = N 24°34'41" E
40.37'
N 28°26'11" E
21.71'

14 L'
CE
3030 SCL
BENTWATER
9800 CENT