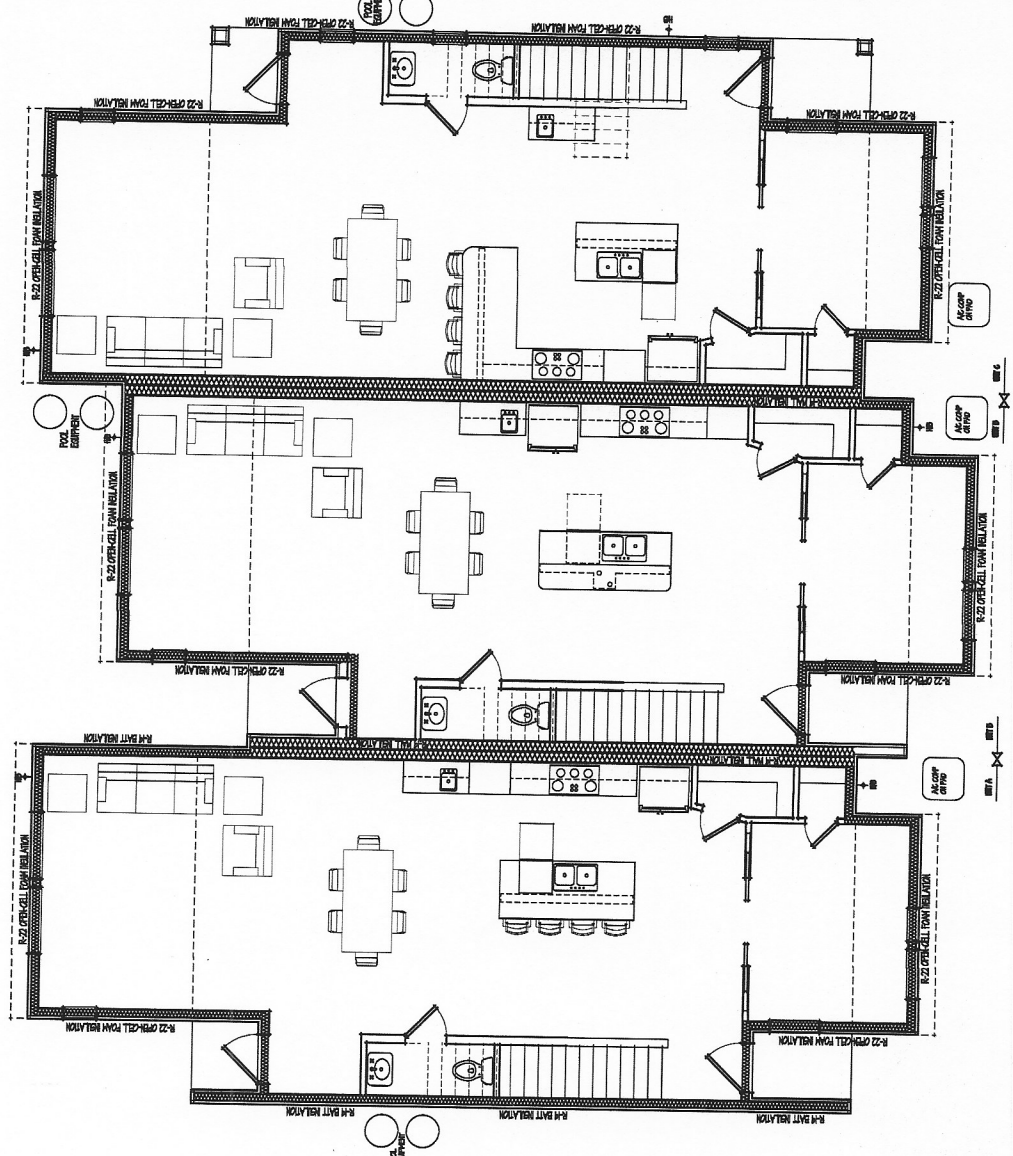


A NEW CONDO PROJECT FOR  
 GOLDEN HORSESHOE DEVELOPMENT  
 COMPANY LLC.  
 1410 CRYSTA EAST STREET UNITS A, B & C  
 CORPUS CHRISTI, TX

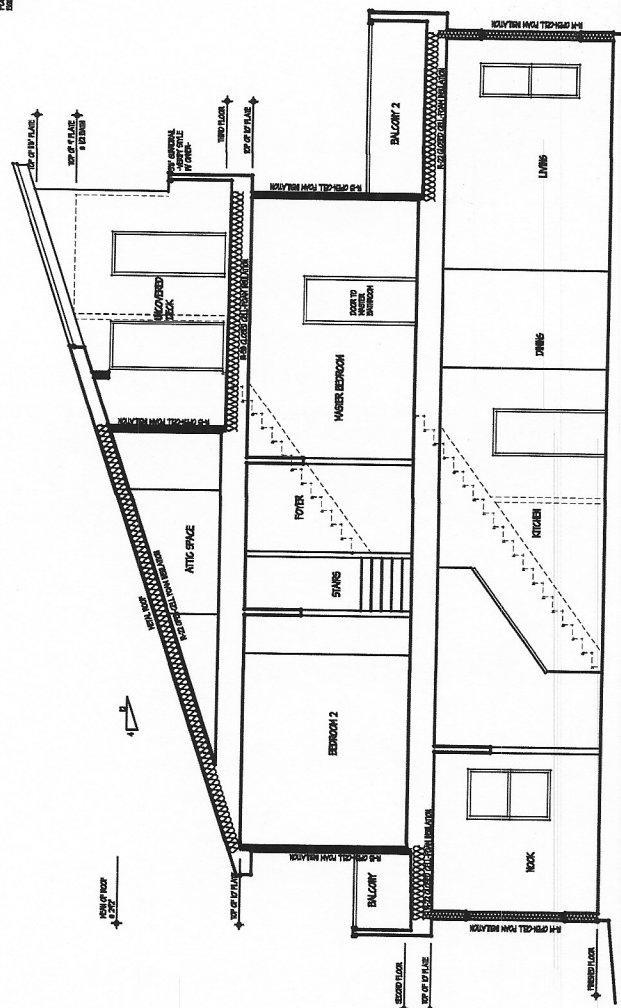
**PDG**  
 South Texas  
**PRIME DESIGN**  
 CORPUS CHRISTI, TX 78408  
 PHONE 361.848.7888  
 JAMES@PDG.COM

DATE 11/03/2014  
 PROJECT NO. E-1-002  
 SHEET NO. 01

SHEET NO. 01



THERMAL ENVELOPE  
 SCALE 1/4" = 1'-0"



THERMAL ENVELOPE SECTION 'A'  
 SCALE 1/4" = 1'-0"

**BUILDER PROFILE**

MINIMUM STANDARDS REQUIRED BY THE 2015 INTERNATIONAL ENERGY CONSERVATION CODE

CLIMATE ZONE	FENESTRATION U-FACTOR	SKYLIGHT U-FACTOR	GLAZED FENESTRATION SHGC	CEILING R-VALUE	WOOD FRAME WALL R-VALUE	MAS5 WALL R-VALUE	FLOOR R-VALUE	BASEMENT WALL R-VALUE	SLAB R-VALUE & DEPTH	CRACK SPACE WALL R-VALUE
2	0.40	0.05	0.25	30	B	46	B	0	0	0

**INSPECTION TESTING**

BLOWER DOOR TEST	5 ACH50
HVAC DUCT LEAKAGE TEST	4 CFM PER 100 SQ. FT. CONDITIONED SPACE (ROUGH OR FINAL) 3 CFM PER 100 SQ. FT. CONDITIONED SPACE (NO AIR HANDLER)

- WALL LEGEND -  
 INSLATED CAVITY