

HOME SWEET *Quick Move-in* HOME



THE GRAYCLIFF

2515 Swang Pl

 4

 3 Full, 1 Half Bath

- ✓ 2918 SQ FT
- ✓ Study w/glass doors at 2nd floor
- ✓ Large Walk-in Shower @ Master
- ✓ Custom closets throughout
- ✓ Situated on lot next to walking trail
- ✓ MLS #60160384

No long drives home when you live in this NEW David Weekley Homes gated community in Timbergrove Village! Situated on a lot next to the walking trail, you will enjoy this spacious, open design with a wall of windows across the rear of the home looking out to a lush rear lawn that is maintained by the HOA! You will be impressed with the high ceilings, rich wood flooring and Kitchen with island/breakfast bar, quartz counters, built-in wine fridge & custom walk in pantry. Relax at the end of a long day in the huge walk-in shower with rain shower head at Master. Large custom walk in closet. Steps away is a large Study w/French doors & wood floors. The huge game room is great for movie night or for friends and family to hang out! Light and bright. Custom closets throughout. Wood stair treads with iron spindles give an elegant look! Pavers on patio, courtyard, walk and driveway. HOA maintains front AND rear yard landscaping so you can enjoy your time off around the big community pool that feels like a resort getaway!

David Weekley Homes is an Environments for Living **DIAMOND** Level Builder! Heating & cooling *usage* is **GUARANTEED** for 3 years!

FLOOR PLAN	PLAN REVIEW REV DATE	PROJECTED HERS INDEX	ESTIMATED ANNUAL HEATING & COOLING COST	ESTIMATED MONTHLY HEATING & COOLING COST
Graycliff	3/28/20	60	\$756	\$63

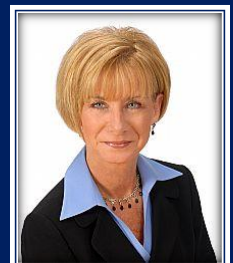


FOR MORE INFORMATION, CONTACT:

Beverly Bradley

832-687-0172

hbradlev@dwhomes.com



See a David Weekley Homes Sales Consultant for details. Prices, plans, dimensions, features, specifications, materials, and availability of homes or communities are subject to change without notice or obligation. Illustrations are artist's depictions only and may differ from completed improvements. Copyright ©2018 David Weekley Homes - All Rights Reserved. 290837 Phoenix, AZ (PHXW102034)



THE GRAYCLIFF

2,918 sq. ft. • 4 Bedrooms • 3 Full Baths • 1 Half Bath • 2 Car Garage



6035 1442 HOU

For additional options, please visit DavidWeekleyHomes.com

6/22/2020

CENTRAL LIVING
by David Weekley Homes