



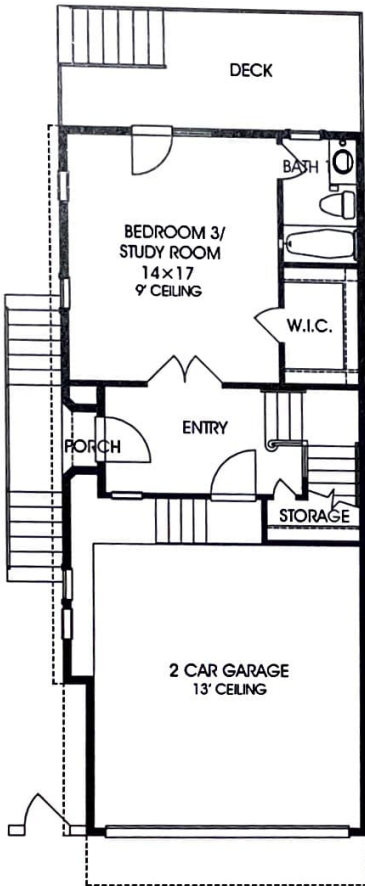
InTown HOMES

Floor Plan

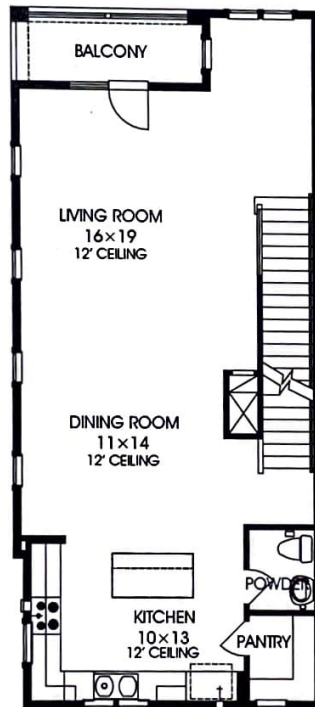
Sherwood RD West 25TH

2,443 sq. ft.

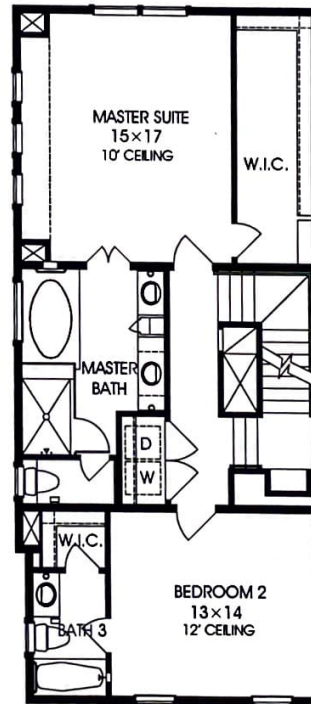
3 bed / 3.5 bath



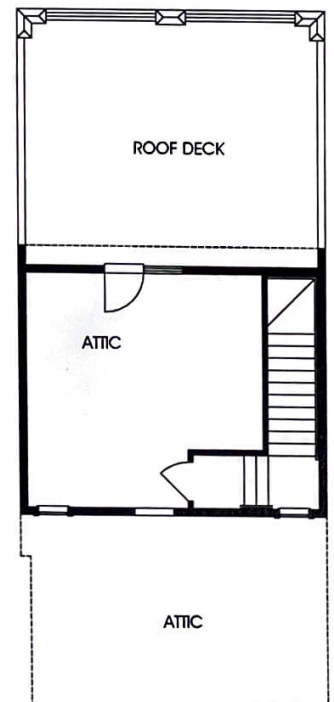
First Floor
509 sq.ft.



Second Floor
926 sq.ft.



Third Floor
991 sq.ft.



Fourth Floor
17 sq.ft.

intown-homes.com

All prices, features and plans are subject to change without notice. Square footage is approximate. No representation or warranties either expressed or implied are made as to the accuracy of the information herein or with respect to the suitability, usability, merchantability or conditions of any property herein described. All rights Reserved. InTownHomes 2013

