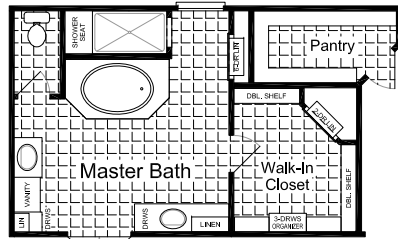


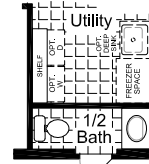
# Fiesta SERIES



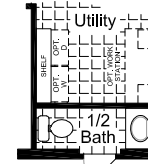
Opt. Grande Spa



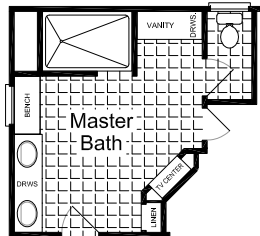
Opt. Picture Window



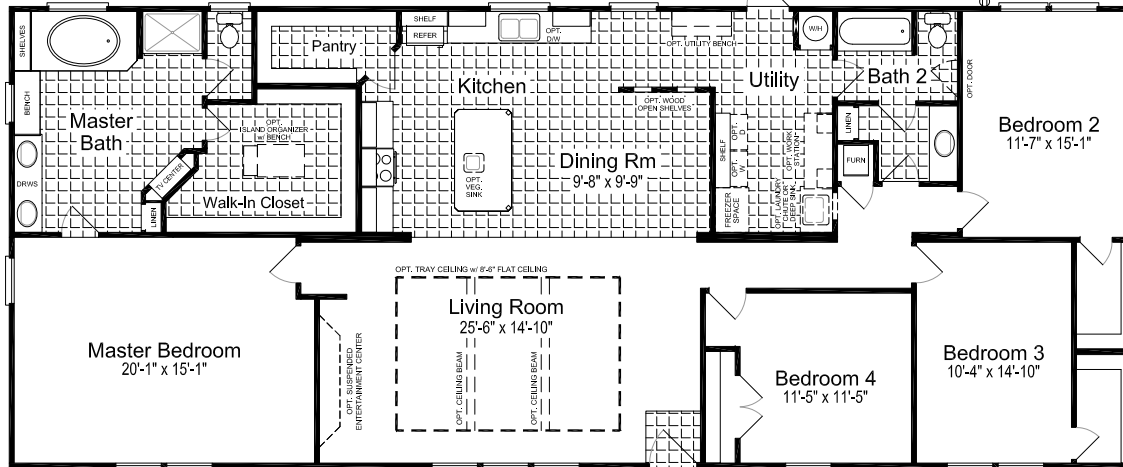
Opt. 1/2 Bath  
Shown w/  
Freezer Space &  
Opt. Deep Sink



Opt. 1/2 Bath  
Shown w/  
Opt. Work Station



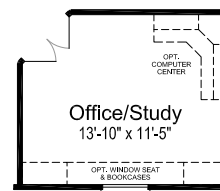
Opt. Infinity Spa



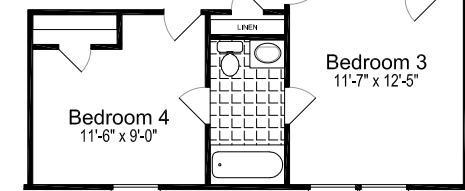
**The "CANYON BAY II"**  
**Model: 320FT32764C**  
 Add "M" to model # for MOD  
 2356 Square feet  
 31'-0" x 76'-0"  
 4 Bedrooms / 2 Baths  
 Austin, Texas Date: 09/16/2019



Opt. Foyer w/ Recessed Entry  
(N/A w/ OPT. TRAY CEILING)



Opt. Home Office/Study  
(N/A w/ OPT. FOYER w/ RECESSED ENTRY)



Opt. Jack & Jill Bath

## Key Features:

- \* Rear Country Kitchen
- \* Built-in Linens in Both Baths
- \* Spa Bench

Because Palm Harbor Homes has a continuous product updating and improvement process, specifications are subject to change without notice or obligation. Likewise, the floor plan shown is representative only and may vary from the actual home. Square footage calculations are based on nominal widths and all room dimensions are approximate subject to industry standards. R-values may vary in compressed areas. Some transportation components may have been recycled after close inspection for safety and appearance.

Copyright © 2019 by Palm Harbor Homes, Inc.  
 All Rights Reserved.