

WELCOME HOME!

Pam Roth

Realtor®

832.841.5928

pamrothrealtor@gmail.com



Just the Facts

- ⇒ Subdivision
Long Meadow Farms
- ⇒ Address
21426 Beverly Chase Dr
Richmond, TX 77406
- ⇒ 4 bedroom, 2 full bath, 2 half bath
- ⇒ 3,476 square foot
- ⇒ Huge corner lot
- ⇒ Lamar Consolidated ISD
Adolphus Elementary School
Wertheimer Middle School
Briscoe Junior High School
John Foster High School
- ⇒ Built in 2007
- ⇒ 1.5 story - media & game rooms up
- ⇒ Offered at \$345,000



4

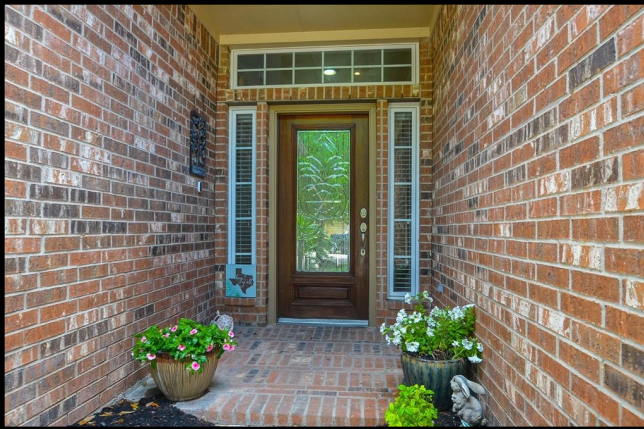


2 Full
2 Half

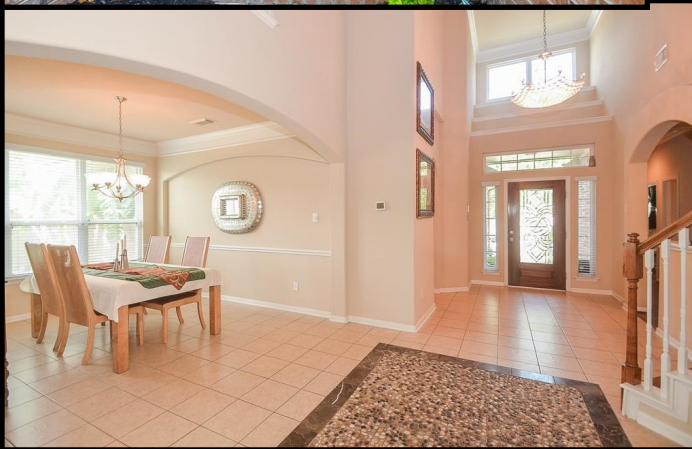


3+





1.5 STORY STUNNING CORNER LOT HOME IN LONG MEADOW FARMS! With a media room, game room and half bath upstairs, this home is PERFECT for your entertaining needs. Plus outside there are three patio areas to host your family and friends. Inside the home has 4 spacious bedrooms (all on the first floor, all hardwood), 2 full baths and 2 half baths. From the moment you enter the grand foyer you will be mesmerized by the stunning chandelier. The stainless steel and granite kitchen has an island for your cooking enjoyment. While you're preparing meals, you will enjoy being included in the conversations going on in the family room thanks to the open floor plan. The primary bedroom is huge and includes a sitting area. The garage is an oversized true 3 car garage (not tandem) - you will have all the storage you can possibly need. Long Meadow Farms is a sought after community with award winning LCISD schools. Close to shopping and dining.



Property Pictures



UPGRADES AND FEATURES

21426 Beverly Chase Dr
Richmond, TX 77406



Pam Roth

Realtor®

JLA Realty

(832) 841-5928

- ◆ New roof February 2021
- ◆ Open floor plan with cozy fireplace
- ◆ Stainless steel appliances
- ◆ Beautiful granite counter tops in kitchen
- ◆ Separate open dining room with chair rail and niche
- ◆ Hardwood and tile floors throughout downstairs
- ◆ Elegant crystal chandelier in towering foyer
- ◆ Stunning curved wooden staircase
- ◆ Spacious game room upstairs
- ◆ Raised media room with dry bar upstairs
- ◆ Surround sound both upstairs and downstairs
- ◆ Huge primary suite with sitting area
- ◆ Fantastic primary bath with soaking tub, separate shower, and his and her sinks
- ◆ Amazing true 3 car garage with extra storage space (NOT tandem)
- ◆ Pex piping system throughout
- ◆ Additional attic storage space
- ◆ Huge corner lot with ample seating areas and green space

NEIGHBORHOOD AMENITIES

- ◆ Award winning Lamar Community ISD with Adolphus Elementary a few blocks away
- ◆ Three resort style community pools
- ◆ Fantastic club house overlooking lake
- ◆ New state of the art fitness center
- ◆ Walking and biking paths
- ◆ Beautiful lakes
- ◆ Neighborhood parks
- ◆ Tennis courts
- ◆ Community events
- ◆ Low HOA (\$850) and low taxes (2.5373)
- ◆ Close to dining, shopping, and entertainment
- ◆ Excellent location to major freeways
- ◆ And so much more!