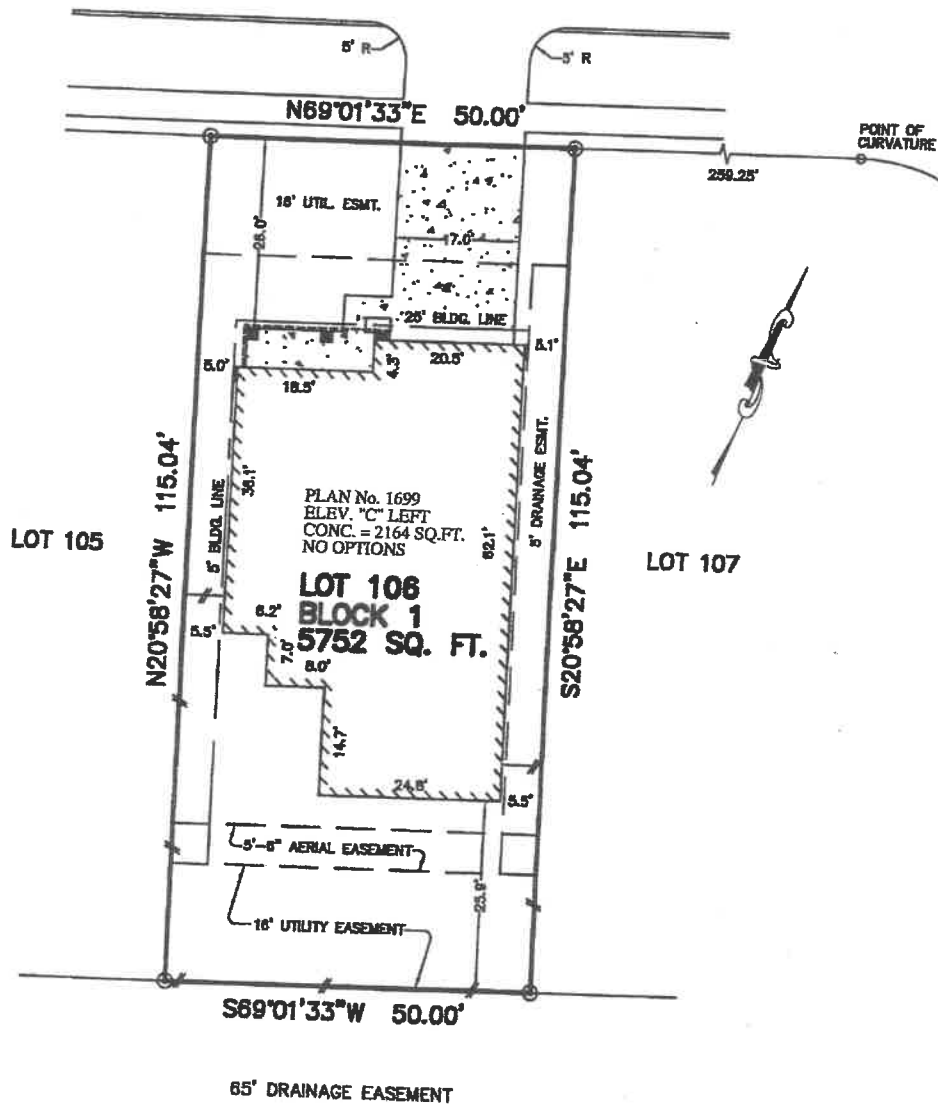


DIAMOND WAY
 (60' R.O.W.)
 28' CONCRETE PAVEMENT



NOTES:

1. ALL BEARINGS SHOWN HEREON ARE BASED ON THE RECORDED PLAT.
2. THIS PLOT PLAN WAS PREPARED WITHOUT BENEFIT OF A TITLE REPORT. THERE MAY BE EASEMENTS, BUILDING LINES & OTHER MATTERS OF RECORD NOT SHOWN HEREON. SURVEYOR OR ALLPOINTS SERVICES CORP. IS NOT LIABLE FOR ANY DAMAGES THAT MAY INCUR IN ANY EVENT THE BUILDER BUILDS ANY IMPROVEMENTS CLOSER THAN 5.0' OR WITHIN AN EASEMENT.

APPROX. LOT COVERAGE: 45%
 FRONT SOD: 212 SQ. YD.
 BACK SOD: 204 SQ. YD.
 A/C PAD: 16 SQ. FT.
 TOTAL PAVING: 933 SQ. FT.

PLOT PLAN
 SCALE: 1" = 20'

©2005, ALLPOINTS SERVICES CORP., ALL RIGHTS RESERVED

FOR: COMPASS POINTE HOMES
 ADDRESS: 15010 DIAMOND WAY
 ALLPOINTS JOB No.: 220045VV
 G.F.: (NONE)



ALLPOINTS SERVICES CORP.

PHONE: 713-468-7707
 FAX: 713-827-1861

LOT 106, BLOCK 1,
LANAI, SECTION ONE,
 CLERK'S FILE No. 4307-S, VOL. B, PG. 250,
 PLAT RECORDS, CHAMBERS COUNTY, TEXAS.

REISSUE DATE: JANUARY 12, 2006
 ISSUE DATE: JULY 14, 2005