

GENERAL NOTES:

PLANS DRAWN TO MEET 2000 IRC INTERNATIONAL RESIDENTIAL CODE.

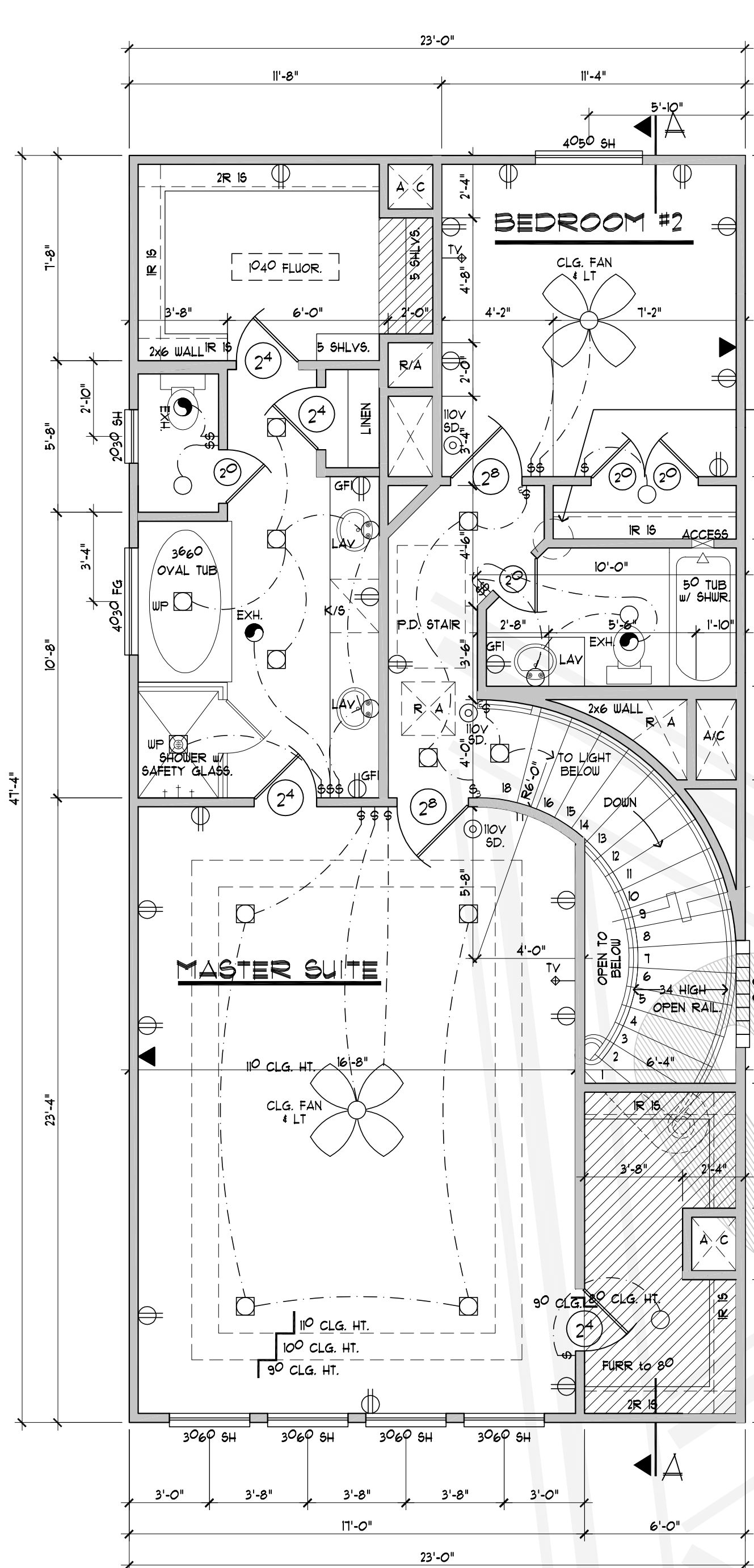
© COPYRIGHT 2000 CAMERON ARCHITECTS, INC. ALL RIGHTS RESERVED.

- THIS PLAN AND THE DESIGNS CONTAINED HEREIN ARE THE PROPERTY OF CAMERON ARCHITECTS, INC. AND MAY NOT BE REPRODUCED, ALL OR IN PART, WITHOUT PRIOR WRITTEN CONSENT FROM CAMERON ARCHITECTS, INC.
- GARAGE TO HAVE 5/8" FIRE CODE GYPSUM BOARD ON ALL WALLS AND CEILING (FULL GYPSUM BOARD). ALL WALL ARE COMMON WALLS ON TWO STORY DWELLING SEC. R309.
- TILE TO BE THINSET.
- CONTRACTOR TO PROVIDE GOOD ATTIC VENTILATION.
- ATTICS CONTAINING APPLIANCES REQUIRING ACCESS SHALL BE PROVIDED WITH A PULL DOWN STAIRWAY WITH A CLEAR OPENING NOT LESS THAN 22" IN WIDTH AND A LOAD CAPACITY OF NOT LESS THAN 350 POUNDS AND A CLEAR AND UNOBSTRUCTED PASSAGEWAY LARGE ENOUGH TO ALLOW REMOVAL OF THE LARGEST APPLIANCE, BUT NOT LESS THAN 30" HIGH AND 22" WIDE AND NOT MORE THAN 20" IN LENGTH (M102.1.3).
- GUTTERS AND DOWNSPOUTS AS REQUIRED.
- FLASHING ABOVE WINDOWS AS REQUIRED.
- CONTRACTOR TO PROVIDE STEEL LINTELS ABOVE ALL OPENINGS WITH BRICK ABOVE.

- WHERE WOOD FRAME WALLS ARE SUBJECT TO WATER SPLASH FRAMING TO BE PROTECTED WITH WATERPROOF PAPER CONFORMING TO SECTION R301.2.
- STRUTS MIN. 2 X 4, 8' MAXIMUM UNBRACED LENGTH, MIN. SLOPE OF 45° FROM HORIZONTAL FIGURE R602.5.1.
- RAPPORTS TO BE NAILED TO ADJACENT CEILING JOISTS.
- ESCAPE/RESCUE WINDOWS FROM SLEEPING AREAS SHALL HAVE MIN. 5.7 sq. ft. CLEAR NET OPENING AND MIN. CLEAR OPENING HT. OF 24" AND MIN. CLEAR OPENING WIDTH OF 20" FINISHED BILL HT. SHALL BE MAX. 44" ABOVE FLOOR. SEC R310.
- ALL GLAZING IN HAZARDOUS LOCATIONS SUBJECT TO HUMAN IMPACT SHALL COMPLY WITH R308 (SAFETY GLASS) AND CPSC 16 CFR/HUMAN IMPACT).
- ALL GLASS AND WINDOWS IN A TUB OR SHOWER IS LESS THAN 60 INCHES ABOVE A STANDING SURFACE AND DRAIN INLET TEMPERED GLAZING IS REQUIRED. SHOWER DOORS TO BE TEMPERED GLAZING.
- SEE SECTION R308.4 FOR SPECIFIC LOCATIONS CONSIDERED HAZARDOUS FOR THE PURPOSE OF GLAZING.

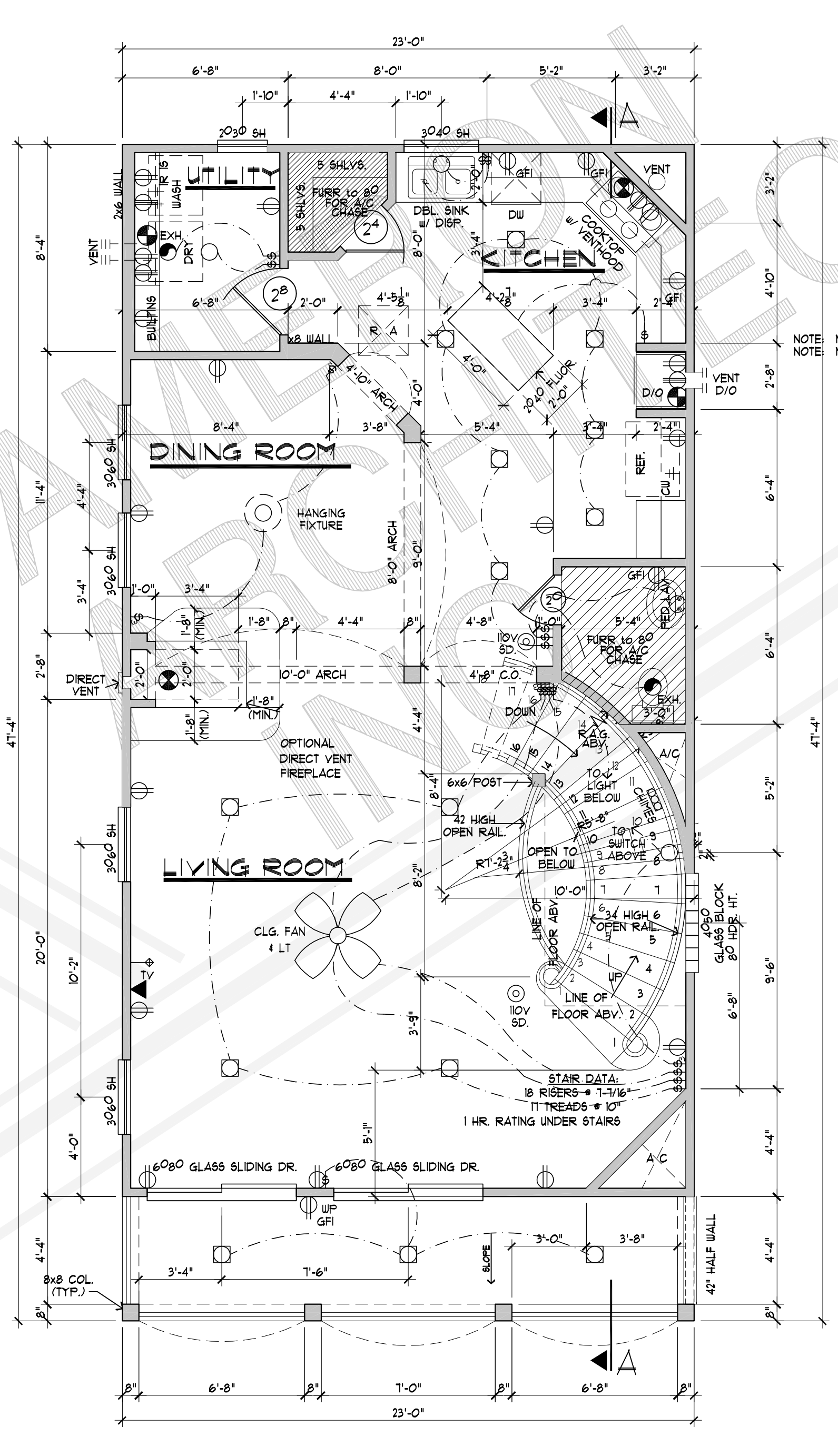
- ALL GLAZING IN SIDE HINGED DOORS SHALL BE TEMPERED.
- ALL EXTERIOR WALLS TO BE BRACED EFFECTIVELY SECTION R602.
- CROSS VENTILATION AT ENCLOSED ATTICS SEC. R604.1 & R606.2.
- FIRESTOPS OF APPROVED MATERIAL SEC. 602.8.
- COMBUSTIBLE MATERIAL 12 INCHES FROM FIREPLACE OPENING.
- PREFAB FIREPLACE TO BE ICBO APPROVED - MANUFACTURERS MANUAL TO BE PROVIDED TO FIELD INSPECTOR.
- FIREPLACE CHIMNEY TO BE 2'-0" HIGHER THAN ANY STRUCTURE WITHIN 10'-0".
- FIRESTOPPING IN CONCEALED SPACES OF HALLS, FURR DOWNS, CEILINGS AND FLOOR LEVELS AND AT 10' INTERVALS ALONG LENGTH OF HALL. SEC R602.8 FIREPLACE HEARTH TO BE 3/8" NONCOMBUSTIBLE MATERIAL.
- STUDS AT 16 INCHES O.C. ON LOAD BEARING WALLS

- ALL 110V SMOKE DETECTORS WITH BATTERY BACK-UP AND INSTALLED IN SERIES PER SEC. R311.
- ELECTRICAL CONTRACTOR TO LOCATE 110V OUTLET WITHIN 25'-0" OF A/C COMPRESSOR (GFI IF NOT IN SPLIT).
- BRICK TIES EVERY 2 SQUARE FEET.
- BALUSTERS AT 4 INCHES CLEAR SPACING.
- SHOWER STALL WALLS TO BE FINISHED WITH NON-ABSORBENT SURFACE TO MIN. HEIGHT OF 76 FEET ABOVE DRAIN INLET. R302.2.
- STAIR CONSTRUCTION MUST COMPLY W/ SECTION R314 AND HAND RAILS MUST COMPLY W/ SECTION R315.
- ALL STAIR PARTS: HAND RAILS AND GUARD RAILS MUST COMPLY WITH SEC. R303.4 LIVE LOAD; SEE TABLE R303.4. RAILS MUST WITHSTAND 200 POUNDS IN ALL DIRECTIONS.
- ONE HOUR RATED GYPSUM BOARD UNDER STAIRS. SEC 314.8.
- ON BRICK STRUCTURES THE WEEP WHOLE SPACING MUST COMPLY W/ SECTION R103.1.6.
- ROOF MATERIAL, CLASS B SHINGLES PER SECTION R312.2.
- ALL GAS LINES WITHIN 36" OF WINDOWS, WINDOWS NEED TO BE TEMPERED AND FIXED.



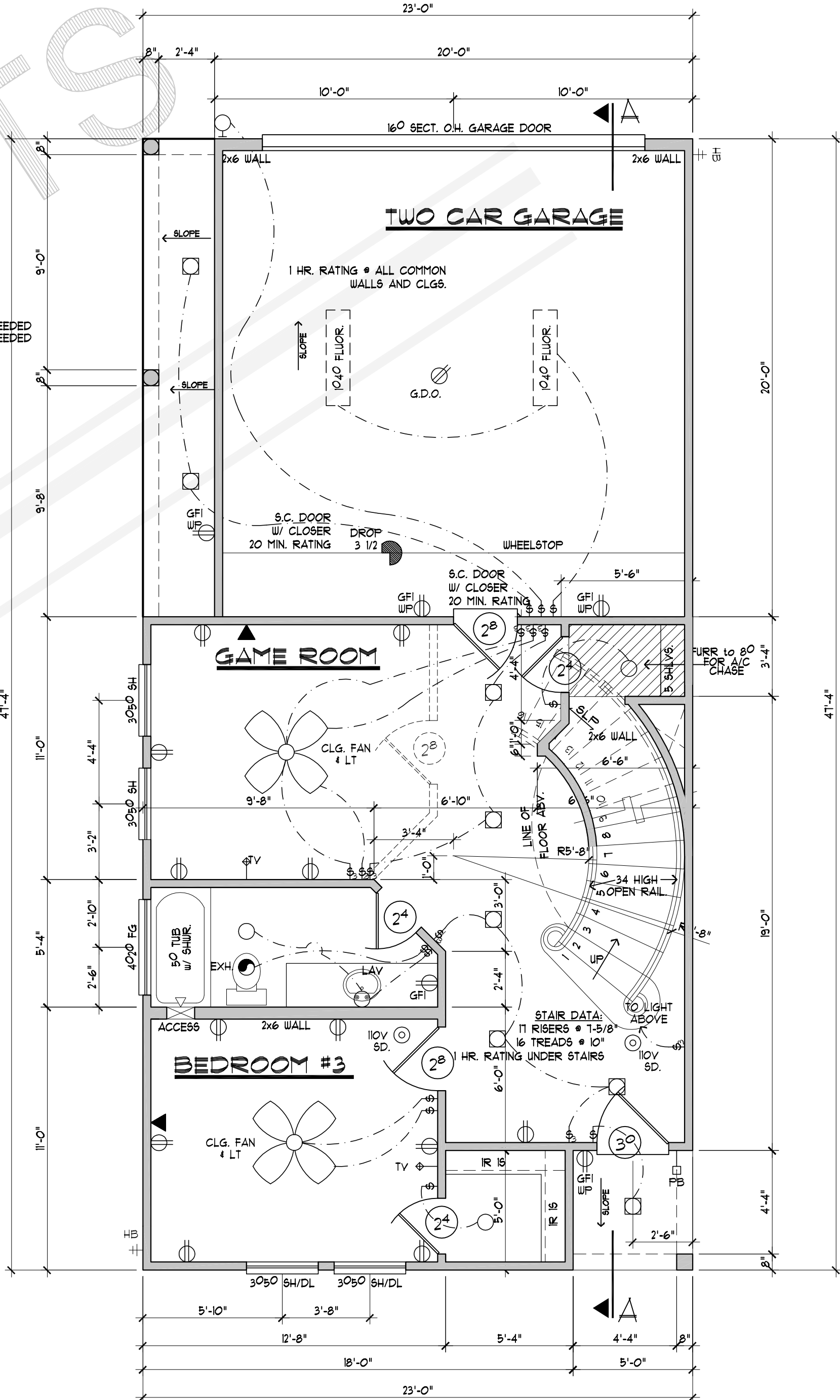
3 THIRD FLOOR PLAN

SCALE: 24 x 36 - 1/4" = 1'-0"
 SCALE: 11 x 17 - 1/8" = 1'-0"
 9'-0" PLATE HEIGHT
 6'-8" HEADER HEIGHT (I.N.O.)



2 SECOND FLOOR PLAN

SCALE: 24 x 36 - 1/4" = 1'-0"
 SCALE: 11 x 17 - 1/8" = 1'-0"
 9'-0" PLATE HEIGHT
 8'-0" HEADER HEIGHT (I.N.O.)



1 FIRST FLOOR PLAN

SCALE: 24 x 36 - 1/4" = 1'-0"
 SCALE: 11 x 17 - 1/8" = 1'-0"
 9'-0" PLATE HEIGHT
 6'-8" HEADER HEIGHT (I.N.O.)

THE PLANS AND THE DESIGNS CONTAINED HEREIN ARE THE PROPERTY OF CAMERON ARCHITECTS, INC. AND MAY NOT BE REPRODUCED, ALL OR IN PART, WITHOUT PRIOR WRITTEN CONSENT FROM CAMERON ARCHITECTS, INC. ALL RIGHTS RESERVED. CAMERON ARCHITECTS, INC. IS NOT RESPONSIBLE FOR THE CONSTRUCTION OF THIS PROJECT. THE CONTRACTOR SHALL BE RESPONSIBLE FOR THE CONSTRUCTION OF THIS PROJECT. THE CONTRACTOR SHALL BE RESPONSIBLE FOR THE CONSTRUCTION OF THIS PROJECT. THE CONTRACTOR SHALL BE RESPONSIBLE FOR THE CONSTRUCTION OF THIS PROJECT.

• 713-666-2185 VOICE
 • 713-838-2785 FAX
 • 655 WEST LOOP SOUTH
 • SUITE 322
 • DALLAS, TEXAS 75227
 • E-MAIL: archmessage@aol.com

CAMERON ARCHITECTS INC.

CONSTRUCTED BY
Brookstone Homes

FLOOR PLANS

BY	DATE	REV.	DESCRIPTION
ES	06-11-2008		REVIEW
ES	08-11-2008		ISSUE
CJ	10-07-2011		REVISED

SQUARE FOOTAGES:	
FIRST FLOOR	605 Sq.Ft.
SECOND FLOOR	374 Sq.Ft.
THIRD FLOOR	1089 Sq.Ft.
TOTAL LIVING	2668 Sq.Ft.
PORCHES	200 Sq.Ft.
GARAGE	400 Sq.Ft.
TOTAL COVERAGE	3268 Sq.Ft.

3G-3-2668

© COPYRIGHT 2003 CAMERON ARCHITECTS, INC. ALL RIGHTS RESERVED.