

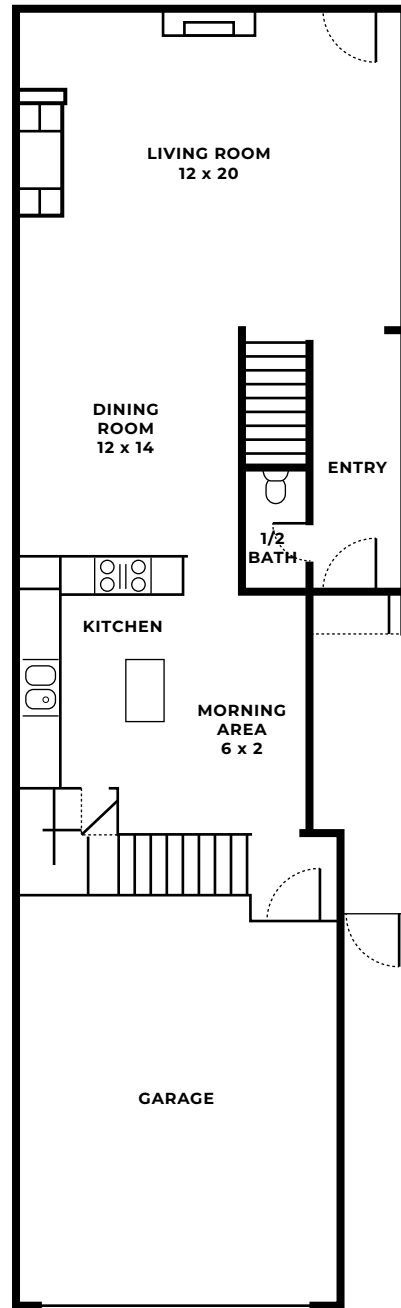
# 1509 PARK STREET

4 BEDS  
3½ BATHS  
3,597 SF LIVING  
PER HCAD

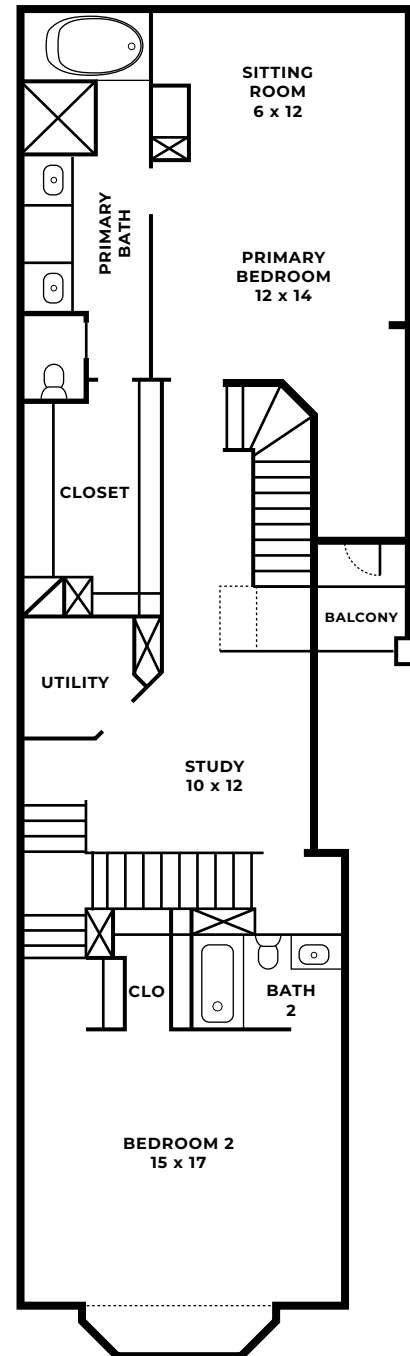
All images used are for illustrative purposes only and are intended to convey the concept and vision for the homes. They are for guidance and do not necessarily represent a true and accurate depiction of the finished product and specification may vary.

Floor plans are intended to give a general indication of the proposed layout only. All images and dimensions are not intended to form part any contract or warranty.

## LEVEL 1



## LEVEL 2



## LEVEL 3

