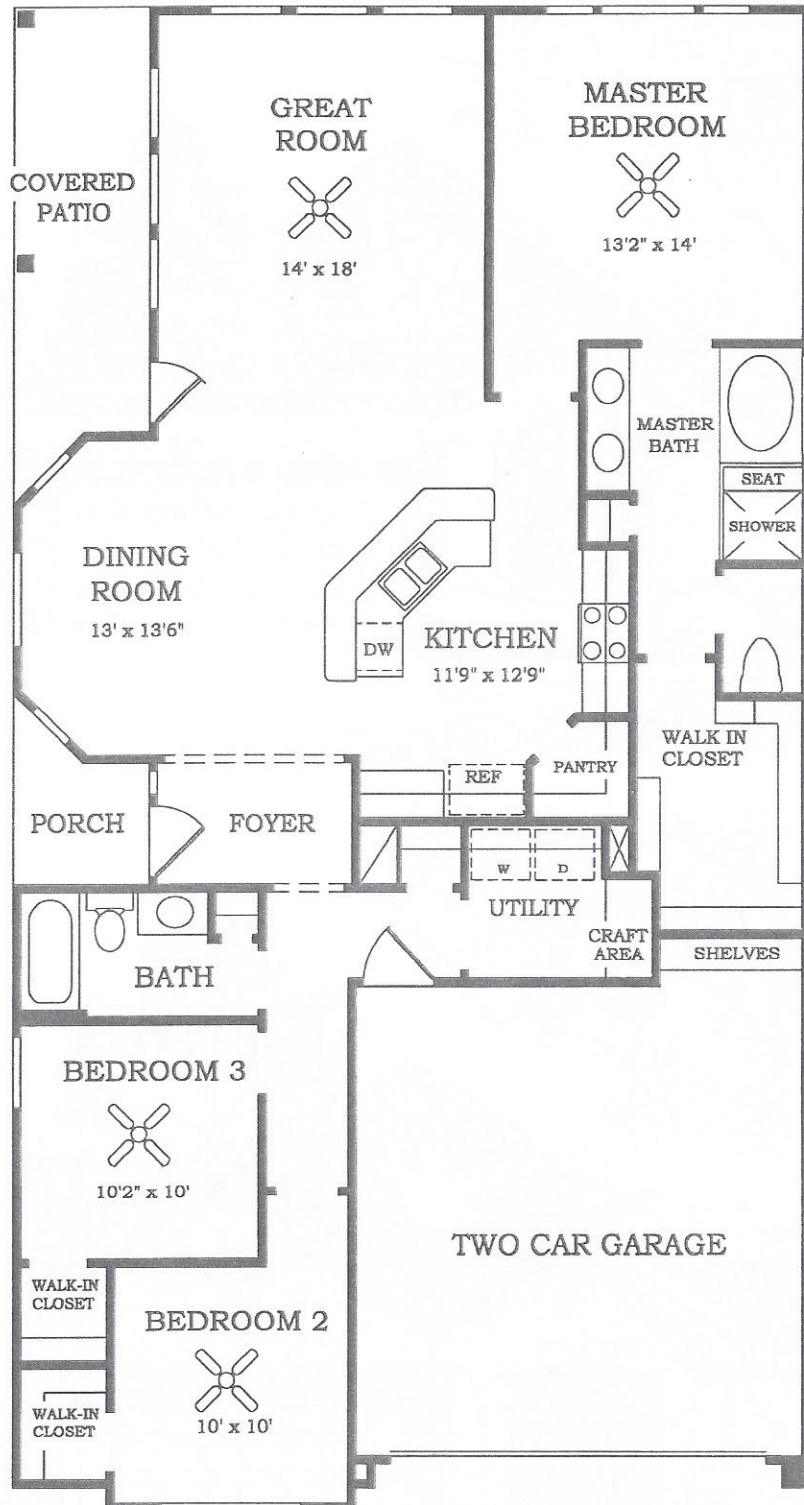


The Calais

MODEL #7220

THREE BEDROOMS, TWO FULL BATHS, COVERED ENTRY, OPEN DINING ROOM AND GREAT ROOM OVERLOOKING COVERED PATIO, LARGE MASTER CLOSET, UTILITY ROOM WITH CRAFT AREA. TWO-CAR ATTACHED GARAGE WITH STORAGE SHELVES. APPROXIMATELY 1631 SQ. FT.



FLOOR PLAN

Lennar
Homes, since 1954

5/14/99



In our continuing efforts to improve our product, Lennar Homes reserves the right to revise specifications and dimensions without notice. All dimensions are approximate. Layout may be revised. Landscaping shown is for conceptual purposes only. Copyright © 1995 Lennar Homes, Inc. All rights reserved 3/96

