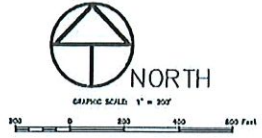


- Boundary
- 100 Year Floodplain
- 500 Year Floodplain
- Floodway
- Special
- Unmapped/ Not Included
- Stream, Intermittent
- River/Creek
- Water Body



WASHINGTON COUNTY, TEXAS  
VICINITY MAP  
SCALE: 1" = 2000'

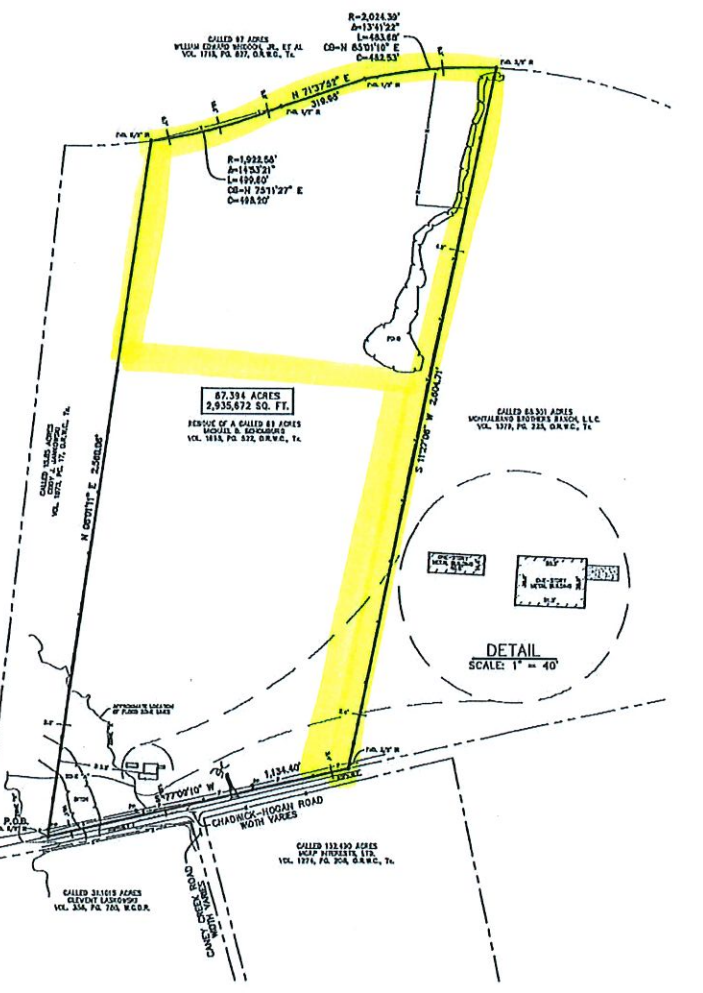


**DESCRIPTION**

A TRACT OR PART OF ANY CONVEYANCE AT THE... (text partially obscured)

BEING MORE OR LESS THAN 10 ACRES... (text partially obscured)

BEING MORE OR LESS THAN 10 ACRES... (text partially obscured)



**GENERAL NOTES**

1. SURVEYOR HAS NOT VISITED THE SUBJECT PROPERTY... (text partially obscured)
2. BEARING AND DISTANCE... (text partially obscured)
3. ACCORDING TO THE FEDERAL EMERGENCY MANAGEMENT AGENCY... (text partially obscured)
4. BEARING AND DISTANCE... (text partially obscured)
5. ENVIRONMENTAL AND DAMAGE ISSUES ARE BEYOND THE SCOPE OF THIS SURVEY... (text partially obscured)
6. THE SQUARE FOOTAGE TOTAL SHOWN HEREON... (text partially obscured)
7. FINISH BOUNDARIES... (text partially obscured)

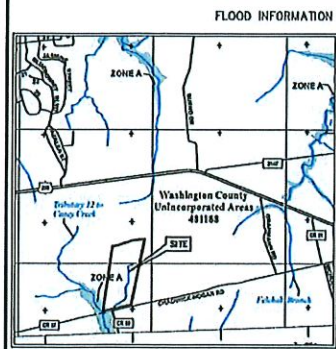
**LEGEND**

\* SOME OF THESE ELEMENTS MAY NOT BE USED IN THIS SURVEY

(R)	- RAILROAD	(PW)	- PRIVATE WATER
(A)	- AIRWAY	(P)	- POWER LINE
(S)	- S.W. CORNER	(R)	- ROAD
(E)	- EASEMENT	(R)	- RAILROAD
(C)	- CURB	(C)	- CEMENT
(D)	- DRIVE	(C)	- CONCRETE
(F)	- FENCE	(C)	- CORNER
(G)	- GULLY	(C)	- CRACK
(H)	- HIGHWAY	(C)	- CEMENT
(I)	- IRRIGATION	(C)	- CONCRETE
(J)	- JUNCTION	(C)	- CORNER
(K)	- KILN	(C)	- CRACK
(L)	- LEASE	(C)	- CONCRETE
(M)	- MOUND	(C)	- CORNER
(N)	- NATURE	(C)	- CRACK
(O)	- OIL	(C)	- CONCRETE
(P)	- POWER	(C)	- CORNER
(Q)	- QUARRY	(C)	- CRACK
(R)	- ROAD	(C)	- CONCRETE
(S)	- S.W. CORNER	(C)	- CORNER
(T)	- TOWER	(C)	- CONCRETE
(U)	- UTILITY	(C)	- CONCRETE
(V)	- VALLEY	(C)	- CORNER
(W)	- WALL	(C)	- CONCRETE
(X)	- WATER	(C)	- CONCRETE
(Y)	- YARD	(C)	- CONCRETE
(Z)	- ZONE	(C)	- CONCRETE

**SURVEYOR'S CERTIFICATION**

I, THE SURVEYOR, HEREBY CERTIFY... (text partially obscured)



**FEMA**  
FEDERAL EMERGENCY MANAGEMENT AGENCY  
National Flood Insurance Program  
1-800-358-3434

**REVISIONS**

DATE	REASON	BY

**RPK LAND SERVICES LLC**  
1516 WASHINGTON, D.C. 20540  
WASHINGTON COUNTY, TEXAS  
11-30-002  
DATE NOVEMBER 2020  
SHEET NO. 1 OF 1