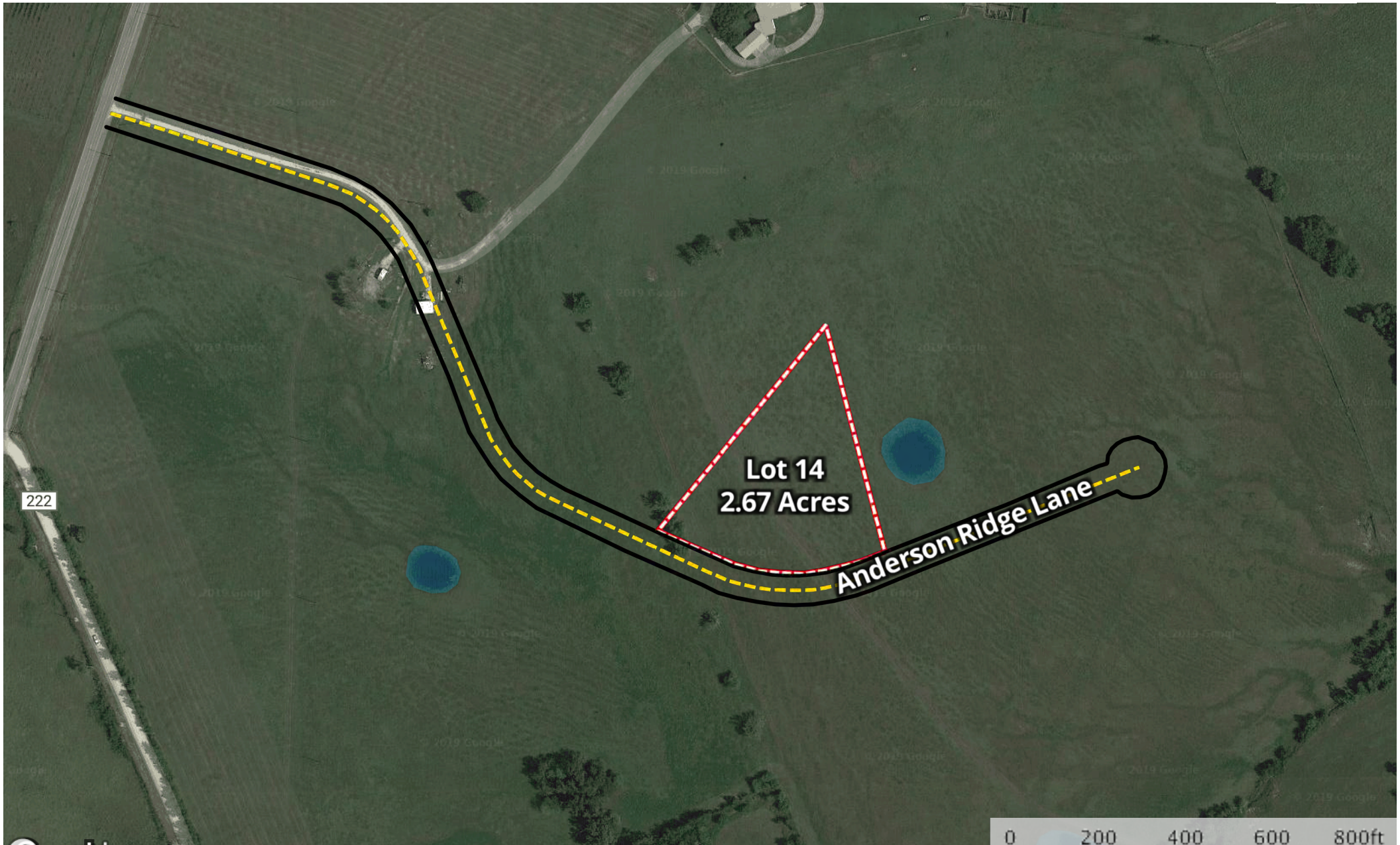


Anderson Ridge

Texas, AC +/-



Googlebox

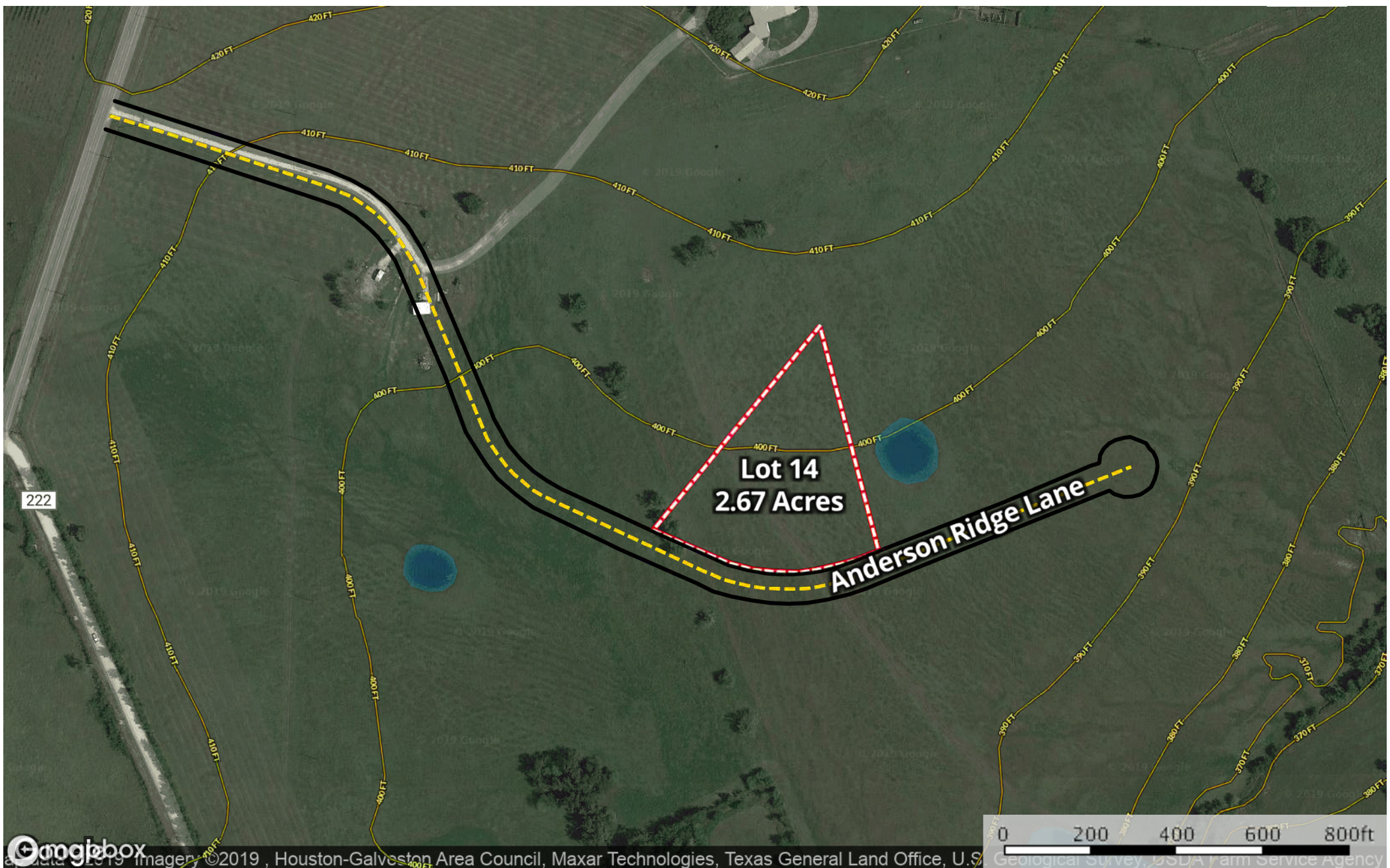
0 200 400 600 800ft
Geological Survey, USDA Farm Service Agency

- Road / Trail
- Anderson Ridge Lane
- Pond / Tank
- Lot 14

M The information contained herein was obtained from sources deemed to be reliable. MapRight Services makes no warranties or guarantees as to the completeness or accuracy thereof.

Anderson Ridge

Texas, AC +/-



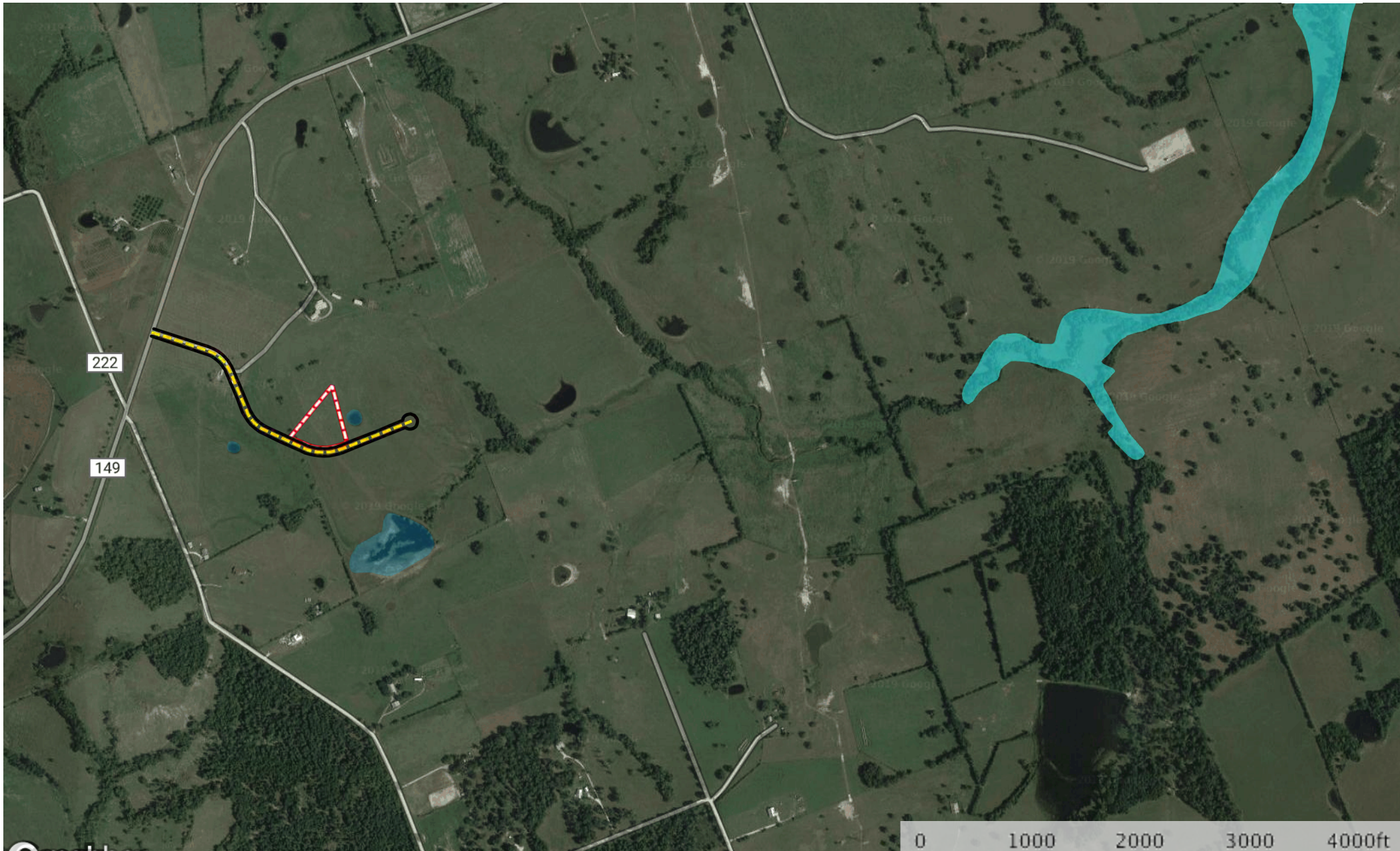
© 2019 Imagery © 2019, Houston-Galveston Area Council, Maxar Technologies, Texas General Land Office, U.S. Geological Survey, USDA Farm Service Agency

- Road / Trail
- Anderson Ridge Lane
- Pond / Tank
- Lot 14

M The information contained herein was obtained from sources deemed to be reliable. MapRight Services makes no warranties or guarantees as to the completeness or accuracy thereof.

Anderson Ridge

Texas, AC +/-



Googlebox

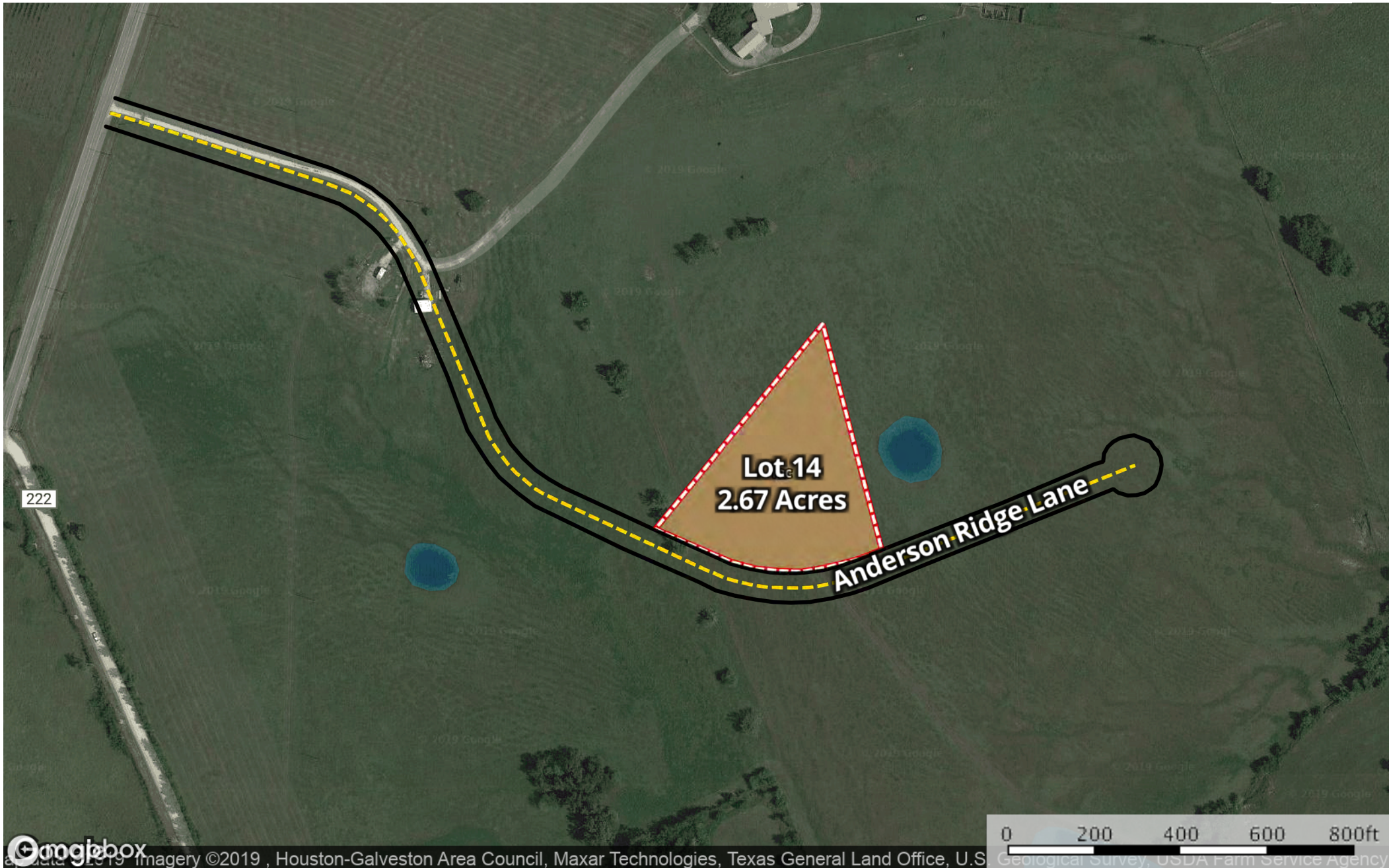
© 2019 Imagery © 2019, Houston-Galveston Area Council, Maxar Technologies, Texas General Land Office, U.S. Geological Survey, USDA Farm Service Agency

- Road / Trail
- Anderson Ridge Lane
- Pond / Tank
- ▭ Lot 14
- 100 Year Floodplain
- 500 Year Floodplain
- Floodway
- Special
- Unmapped/ Not Included

M The information contained herein was obtained from sources deemed to be reliable. MapRight Services makes no warranties or guarantees as to the completeness or accuracy thereof.

Anderson Ridge

Texas, AC +/-



Googlebox

Imagery ©2019, Houston-Galveston Area Council, Maxar Technologies, Texas General Land Office, U.S. Geological Survey, USDA Farm Service Agency

- Road / Trail
- Anderson Ridge Lane
- Pond / Tank
- Lot 14

M The information contained herein was obtained from sources deemed to be reliable. MapRight Services makes no warranties or guarantees as to the completeness or accuracy thereof.

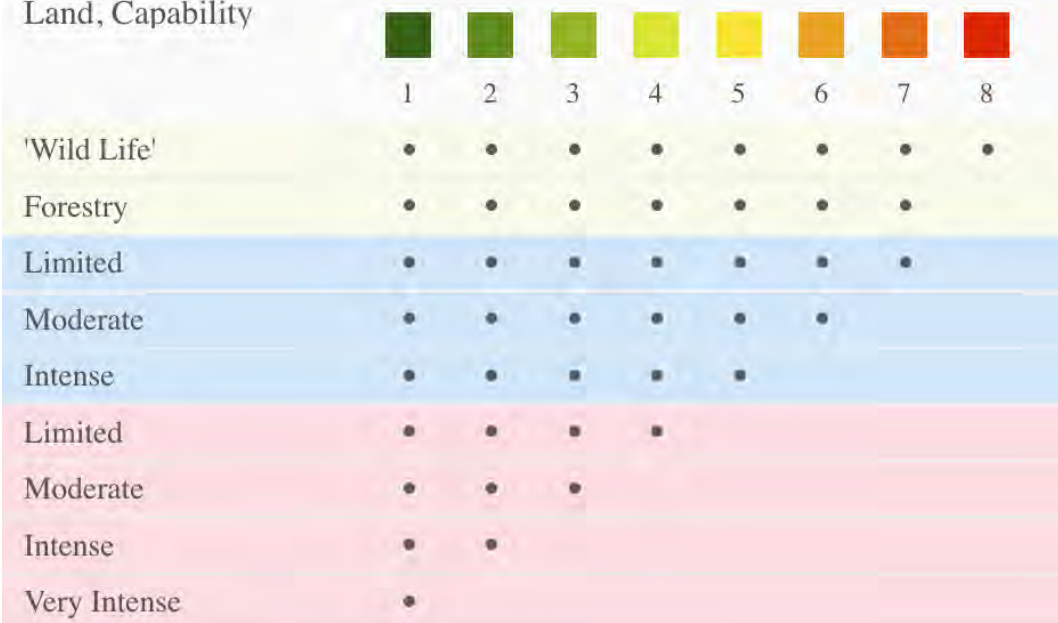
SOIL CODE	SOIL DESCRIPTION	ACRES	%	CAP
FrC	Frelsburg clay, 1 to 5 percent slopes	2.7	99.99	3e
TOTALS		2.7	100%	3.0

Capability Legend

Increased Limitations and Hazards

Decreased Adaptability and Freedom of Choice Users

Land, Capability



Grazing Cultivation

(c) climatic limitations (e) susceptibility to erosion

(s) soil limitations within the rooting zone (w) excess of water