

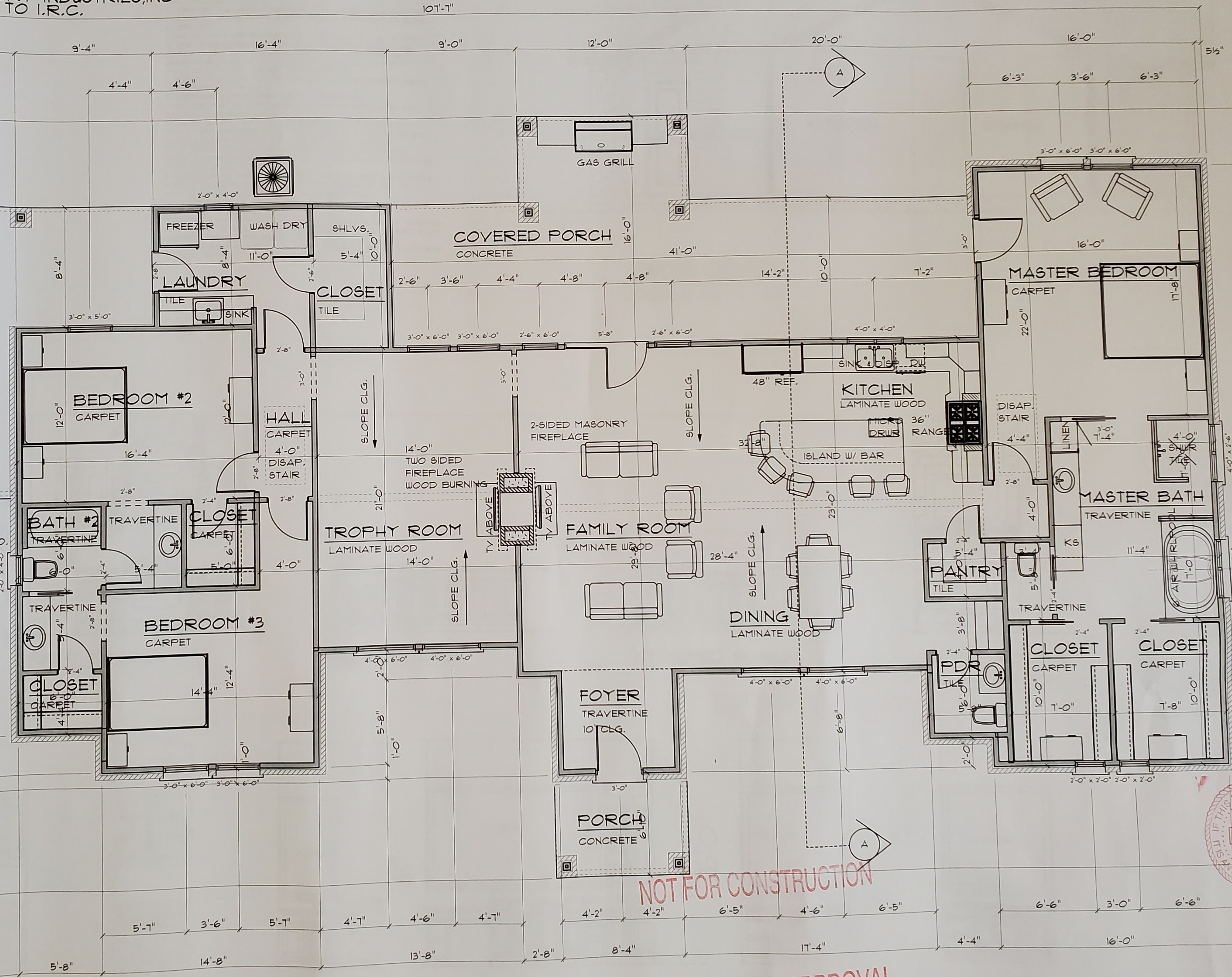


10' CEILING

CLEARANCE 75"
X6 RAILS AND STEPS
EXTRA WIDE LADDER
350 LB. LOAD RATING
LANDING SPACE 71"

FOLDING ATTIC STAIR DETAIL
SPACEMAKER BY CENTURY INDUSTRIES, INC
DESIGN MUST CONFORM TO I.R.C.

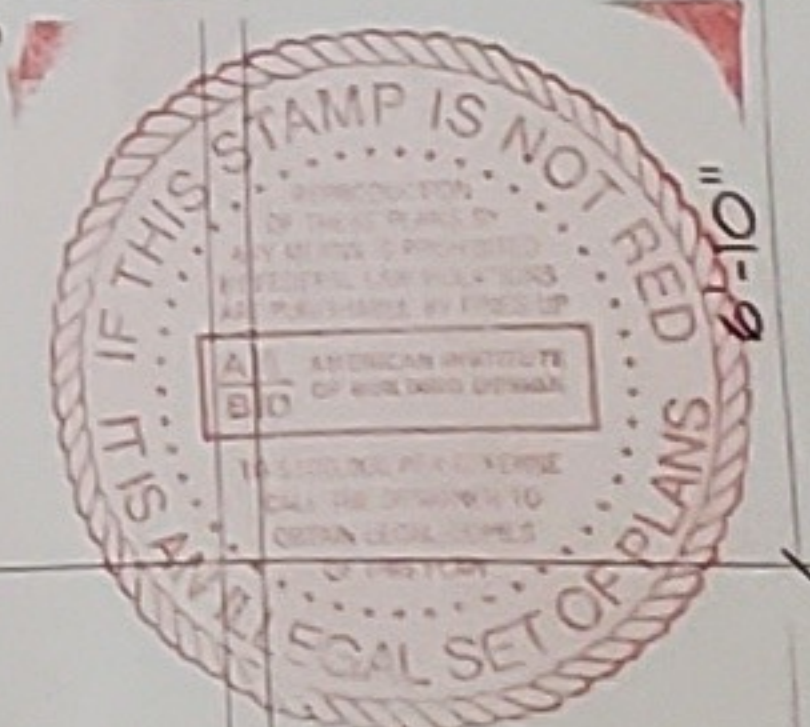
PORTE COCHERE
CONCRETE



AREAS	
LIVING AREA	2610
FRONT PORCH	56
REAR PORCH	476
PORT COCHERE	560
TOTAL STRUCTURE	3702 SQ.FT.

NOT FOR CONSTRUCTION

CUSTOMER APPROVAL
FLOOR PLAN
SCALE 1/4" = 1'-0"



24'-0"

107'-7"