

FIRST FLOOR PLAN

SCALE: 1/4" = 1'

ELECTRICAL LEDGEND

- STANDARD SWITCH
- 3-WAY SWITCH
- 4-WAY SWITCH
- EXHAUST FAN
- Ⓢ - 110V WALL MOUNTED RECTFICAL
- Ⓢ - 220V WALL MOUNTED RECTFICAL
- Ⓢ - 110V FLOOR MOUNTED RECTFICAL
- Ⓢ - WEATHER-PROOF 110V WALL MOUNTED RECTFICAL
- Ⓢ - PHONE JACK FLOOR MONTED

SPECIFICATIONS

SWEAT HOME

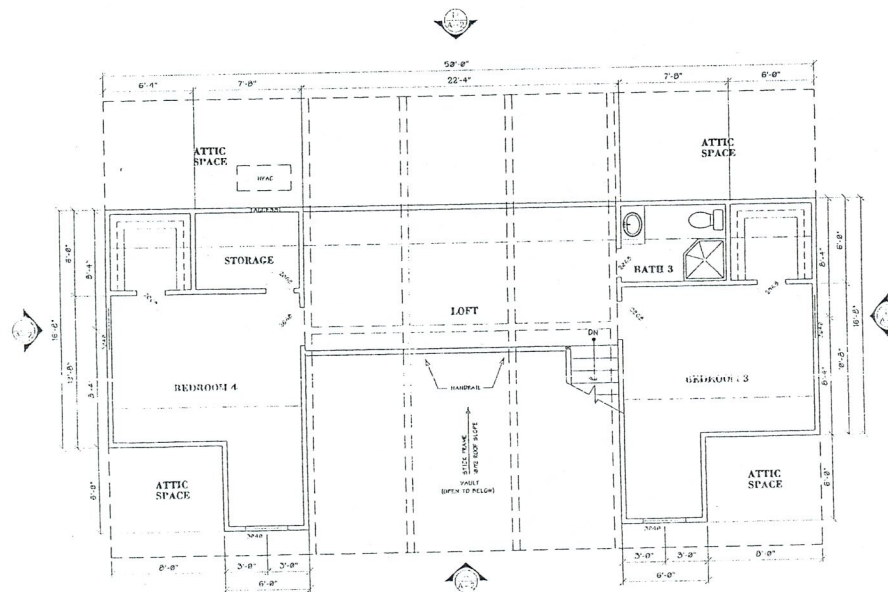
FIRST FLOOR: 1,600 SQ. FT.
 LOFT: 694 SQ. FT.
 LIVING AREA: 2,294 SQ. FT.

TEXAS LOG HOMES
 11500 HIGHWAY 290 EAST
 CHAPPEL HILL, TEXAS 77426
 PHONE: (979) 251-7944

REVISIONS

NO	DESCRIPTION	DATE	APPROVED

DRAWN BY: ANDREW MASSEY DATE: 02/01/04
 SCALE: PAGE: 1



LOFT FLOOR PLAN

SCALE: 1/4" = 1'

LIGHT FIXTURE & ELECTRICAL LEDGEND

- RECESSED DOWNLIGHT
- SURFACE MOUNTED OR SUSPENDED LIGHT
- WALL MOUNTED LIGHT
- 2x4' FLUORESCENT FIXTURE
- FLUORESCENT FIXTURE
- ⊗ 48" CEILING FAN W/ LIGHT
- ⊗ 50" CEILING FAN W/ LIGHT
- ⊞ STANDARD SWITCH
- ⊞ 3-WAY SWITCH
- ⊞ 4-WAY SWITCH
- ⊞ EXHAUST FAN
- ⊞ EXHAUST FAN W/ HEAT LAMP
- ⊞ TV JACK COAXIAL WALL MOUNTED
- ⊞ 10V WALL MOUNTED RECEPTICAL
- ⊞ 220V WALL MOUNTED RECEPTICAL
- ⊞ 10V FLOOR MOUNTED RECEPTICAL
- ⊞ 10V FLOOR MOUNTED RECEPTICAL
- ⊞ WEATHER PROOF 10V WALL MOUNTED RECEPTICAL
- ⊞ SPECIAL PURPOSE RECEPTICAL
- ⊞ PHONE JACK WALL MOUNTED
- ⊞ PHONE JACK FLOOR MOUNTED

SPECIFICATIONS

SWEAT HOME

FIRST FLOOR:	1,400 SQ. FT.
LOFT:	894 SQ. FT.
LIVING AREA:	2,294 SQ. FT.
PORCHES:	300 SQ. FT.
TOTAL:	2,594 SQ. FT.



REVISIONS

NO.	DESCRIPTION	DATE	APPROVED

DRAWN BY: ANDREW MASSEY DATE: 07/20/09
 SCALE: 1/4" = 1' PAGE: **A-2**