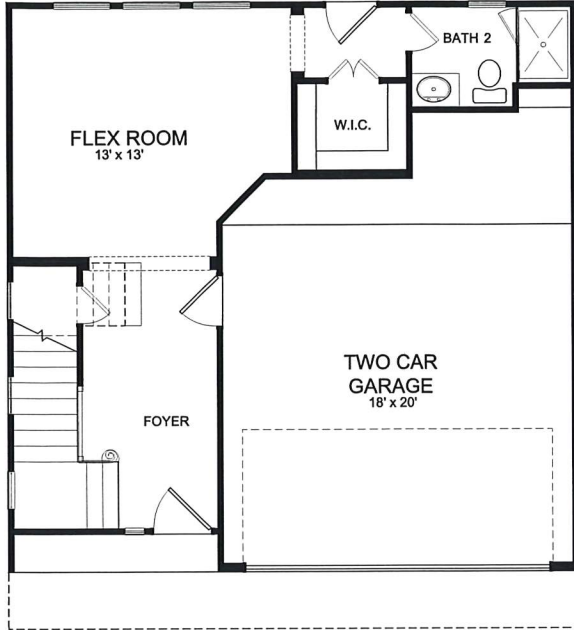
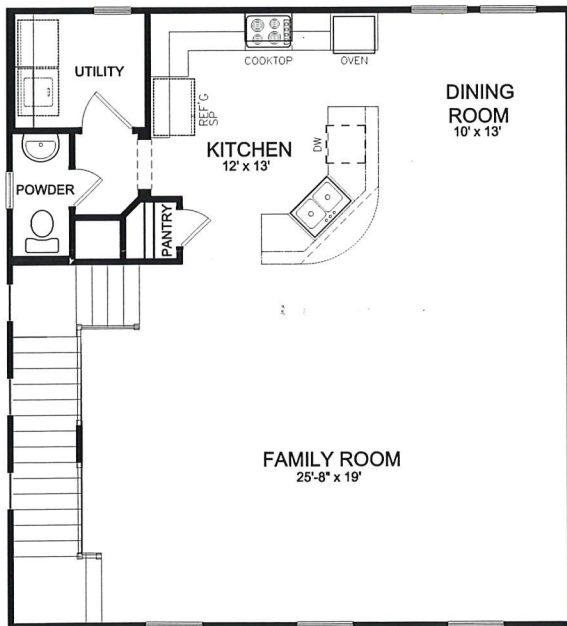
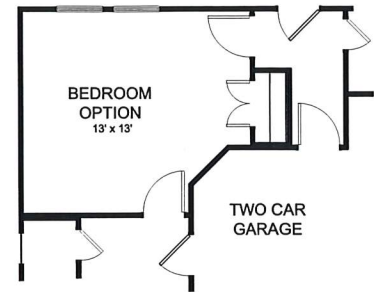
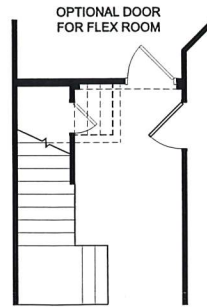


ROME 9001

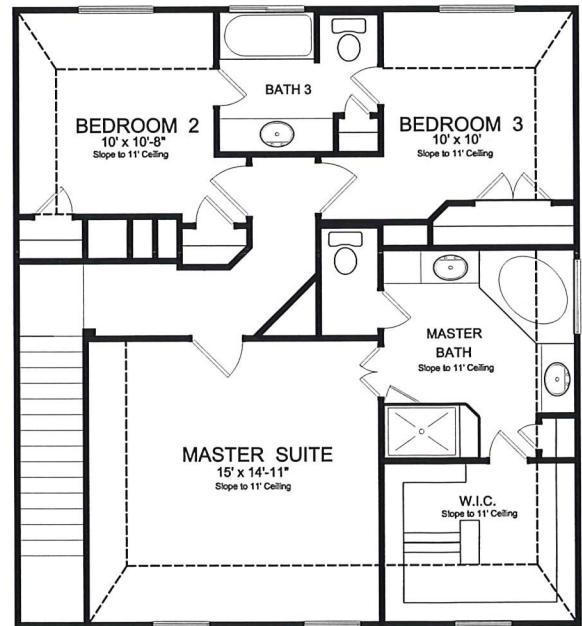
KHovnanian[®]
Homes



FIRST FLOOR



SECOND FLOOR



THIRD FLOOR

4 Bedrooms • 3.5 Baths • 2 Car Garage • 2,286 Square Feet

All dimensions are approximate. Window configurations may vary upon elevation chosen. Purchasers may review detailed architectural drawings available in the sales office to ensure accuracy and understanding of home chosen. Please be advised that the square footage in the architectural drawings will be greater than that shown in this brochure because the architectural drawings include square footages for Common Elements which are adjacent to but not part of the home. All finished square footage calculations for this home were made based on plan dimensions only and may vary from the finished square footage of the home as built. We are pledged to the letter and spirit of U.S. policy for the achievement of equal housing opportunity throughout the Nation. We encourage and support an affirmative advertising and marketing program in which there are no barriers to obtaining housing because of race, color, religion, sex, handicap, familial status or national origin. 07/26/16

ALL Houston K. Hovnanian® HIGH PERFORMANCE HOMES

SEALED DUCTWORK:
Mastic and taped sealed ductwork in unconditioned spaces to minimize energy loss

HIGH EFFICIENCY HVAC:
Gas furnace for reduced energy costs. MERV 10 air filters and fresh air ventilation system for increased indoor air quality

AIR SEALING:
Hotwall sheathing, poly seal, and drywall penetrations sealed for improved thermal performance and air infiltration

CARPET AND PAD:
Manufactured using recycled content with low chlorofluorocarbons (CFCs) for improved indoor air quality

FIBER CEMENT SIDING:
Manufactured from a long lasting, non-toxic fiber cement combination

14 SEER A.C. UNIT
Cost effective and energy efficient air conditioning unit

RADIANT BARRIER ROOF DECKING:
Energy efficient radiant barrier that reduces radiant heat from entering the attic, keeping it cooler and lowering energy costs

R-38 ATTIC INSULATION:
Increase insulation for lower heating and cooling costs

DRIP EDGE: Moisture management system at roof/gutter location protects against moisture infiltration

CFL LIGHT BULBS:
Installed in the interior for reduced energy usage

PROGRAMMABLE THERMOSTATS:
Programmable thermostats make it easy for you to save energy and money by easily monitoring and regulating your home's temperature

ENERGY EFFICIENT DOUBLE PANE LOW E WINDOWS: Low E windows with low Solar Heat Gain Coefficient for improved thermal performance

FLOOR JOISTS: Engineered floor system design for more predictable floors and to minimize waste

SILL SEAL:
Between exterior plate and slab to improve air and water infiltration performance

ENGINEERED WINDSTORM DESIGN: For more reliable performance

BRICK & MANUFACTURED STONE:
Acquired regionally within 500 miles to save on use of fuel



EQUAL HOUSING OPPORTUNITY

All Houston K. Hovnanian® HIGH PERFORMANCE HOMES

Energy Efficient Features included in all Houston K. Hovnanian® High Performance Homes Other Homes

✓	14 SEER AC Unit - Cost effective and energy efficient air conditioning unit.	
✓	Low E Windows - Double Pane Low E windows with low Solar Heat Gain Coefficient for improved thermal performance.	
✓	Programmable Thermostats - Programmable thermostats make it easy for you to save energy and money by easily monitoring and regulating your home's temperature.	
✓	High Efficiency HVAC - Gas furnace for reduced energy costs.	
✓	Interior CFL Lighting - Installed for reduced energy usage.	
✓	MERV 10 Air Filters - For improved indoor air quality and reduced maintenance.	
✓	High Efficiency Water Heater - Installed for reduced energy costs.	
✓	Fresh Air Ventilation - For improved indoor air quality.	
✓	Radiant Barrier Roof Decking - Energy efficient and cost effective radiant barrier that reduces radiant heat from entering the attic, keeping it cooler and lowering energy costs.	
✓	Engineered Floor System - Designed for more predictable floors and to minimize waste.	
✓	Sealed Ductwork - Mastic and taped sealed ductwork in unconditioned spaces to minimize energy loss.	
✓	Tight Construction - Reduced air infiltration system includes hotwall sheathing, poly seal, drywall penetrations sealed and sill seal between exterior plate and slab for improved thermal performance and air infiltration.	

