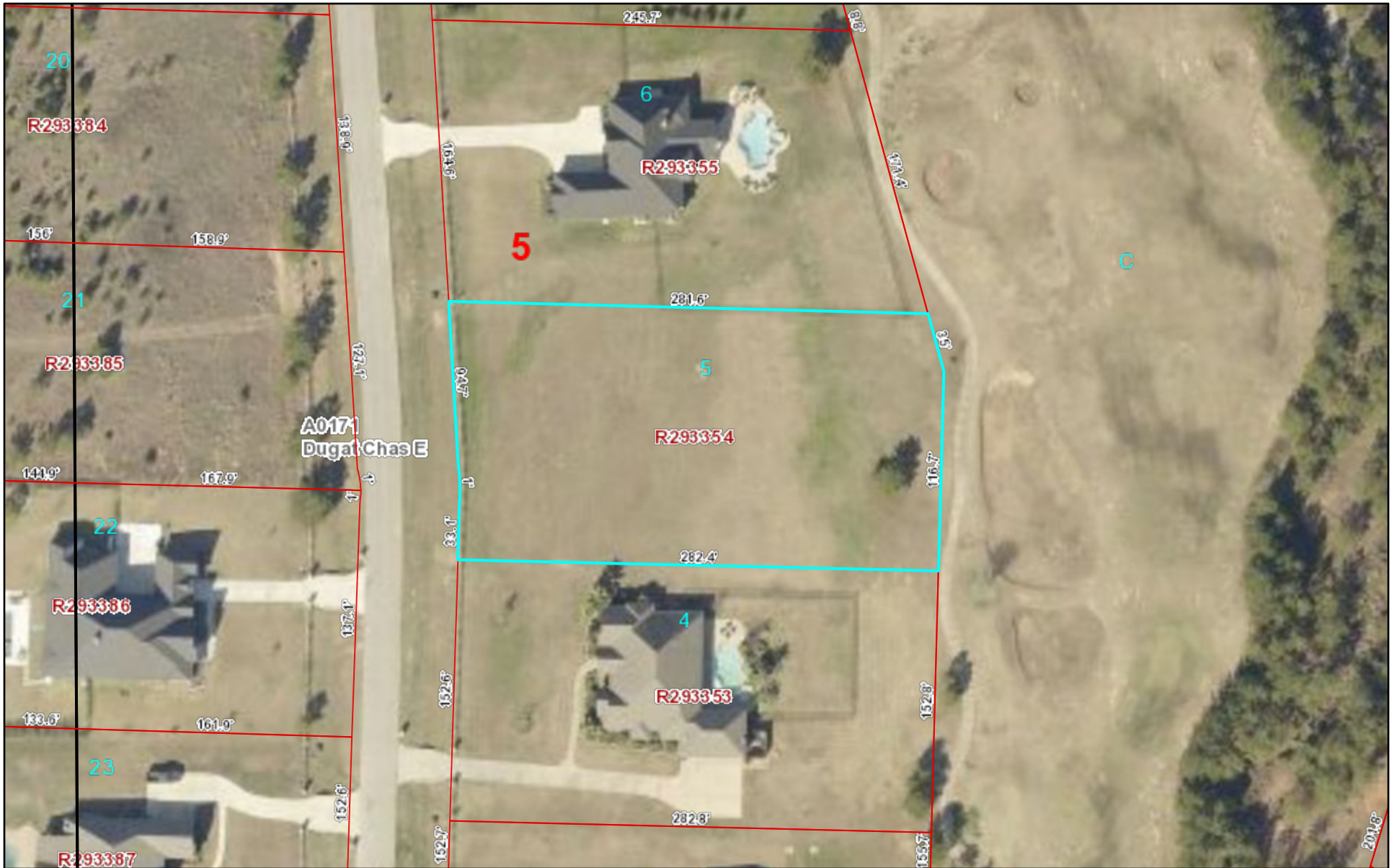


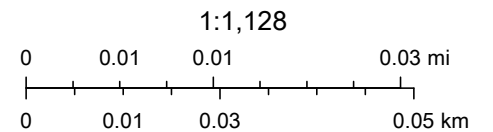


Montgomery CAD Web Map



5/15/2021, 9:17:50 AM

-  Abstracts
-  Parcels



© OpenStreetMap (and) contributors, CC-BY-SA

Montgomery County Appraisal District, BIS Consulting -
Disclaimer: This product is for informational purposes only and has not been prepared for or be suitable for legal, engineering, or surveying purposes. It does not represent an on-the-ground survey and represents only the approximate relative location of boundaries.