

EVERYTHING'S INCLUDEDsm

CHATEAU COLLECTION FEATURES

INTERIOR FEATURES

- Security System with 2 keypads and motion detector
- Rounded sheetrock corners in entry
- Colonist raised panel interior doors
- Ceramic tile flooring in foyer area
- Multi-speed ceiling fan with light kit in master bedroom, secondary rooms, great room, study & loft
- ½" Rebond carpet pad
- 100% nylon "Stain Relief" carpeting with a five-year wear guarantee
- White "Divided Light" style windows on front of home
- Folding stair access to attic
- Pre-wired for telephones in kitchen, bedrooms, master bath, loft, utility room, study, and garage
- Pre-wired for cable television outlets in great room, bedrooms, study and loft
- Polished brass lever interior door hardware
- Smoke detectors
- Suspended light fixture in dining room with dimmer
- Crown molding in entry, dining room, kitchen, family room and master bedroom
- Two tone interior paint scheme

KITCHEN FEATURES

- White on white appliances
- Complete GE[®] appliance package:
 - Self-cleaning electric range
 - Multi-cycle potscrubber dishwasher
 - Combined microwave/vent hood
- Gas and electric stove hook-up
- 42" upper cabinets
- Fluorescent lighting
- Ceramic tile flooring in kitchen and breakfast area
- Ceramic tile backsplash
- White porcelain sink with designer white faucet
- Garbage disposal

LAUNDRY ROOM FEATURES

- Gas & Electric dryer hook-up
- Ceramic tile flooring
- Interior laundry room
- Oversized with built-in craft area
- Convenient overhead rod & shelves

MASTER BATH FEATURES

- Royal oval garden tub with therapeutic jets
- Moen chrome washerless faucets
- Ceramic tile flooring
- Separate shower with seat and cultured marble walls
- "Cultured marble" vanity tops
- Medicine cabinet
- Elongated commode
- Air conditioned walk-in closet with fluorescent lighting

Your Copy

CHATEAU COLLECTION FEATURES (CONTINUED)

SECONDARY BATH FEATURES

- Porcelain and steel tub with ceramic tile on shower walls
- Ceramic tile flooring
- Polished chrome Moen washerless faucets
- "Cultured marble" vanity tops
- Medicine cabinet
- Elongated commode

EXTERIOR FEATURES

- Complete coverage sprinkler system
- 50-year warranted Hardie-Plank masonry siding, soffits and fascia
- Mahogany leaded glass entry door
- Custom landscape package
- Garage door opener
- Wood fenced back yard
- Coach light at garage
- Weatherproof exterior outlets, front & back
- Hose connections, front & back with anti-siphoning device
- Screens on all operable windows
- Deadbolt locks for exterior doors
- Concrete patio
- Address marker/keystone
- Oversized garage with storage spaces
- Durable steel garage door
- Bright fluorescent lighting in garage
- Lighted door bell
- Covered porch (per plan)

CONSTRUCTION FEATURES

- 2-10 Home Buyer's Warranty
- Shingles nailed (not stapled) to decking
- Post tension foundation certified on-site by an independent engineer
- Copper water pipes and wiring
- High quality composition roof shingles with 20-year warranty

ENERGY FEATURES

- "Sunglass" tinted windows for UV reduction
- 14 SEER air conditioning
- High efficiency gas heating
- Programmable thermostat
- 40 gallon, quick recovery gas water heater
- Dow Styrofoam insulation sheathing
- Polyseal foam insulation used at exterior doors, windows and floor/ceiling plates
- Soffit vents (per plan)
- Roof ridge ventilation

Insulation Specifications:

- R-38 flat ceilings
- R-13 walls
- R-3.0 insulated sheathing
- R-6.0 heating and air conditioning duct



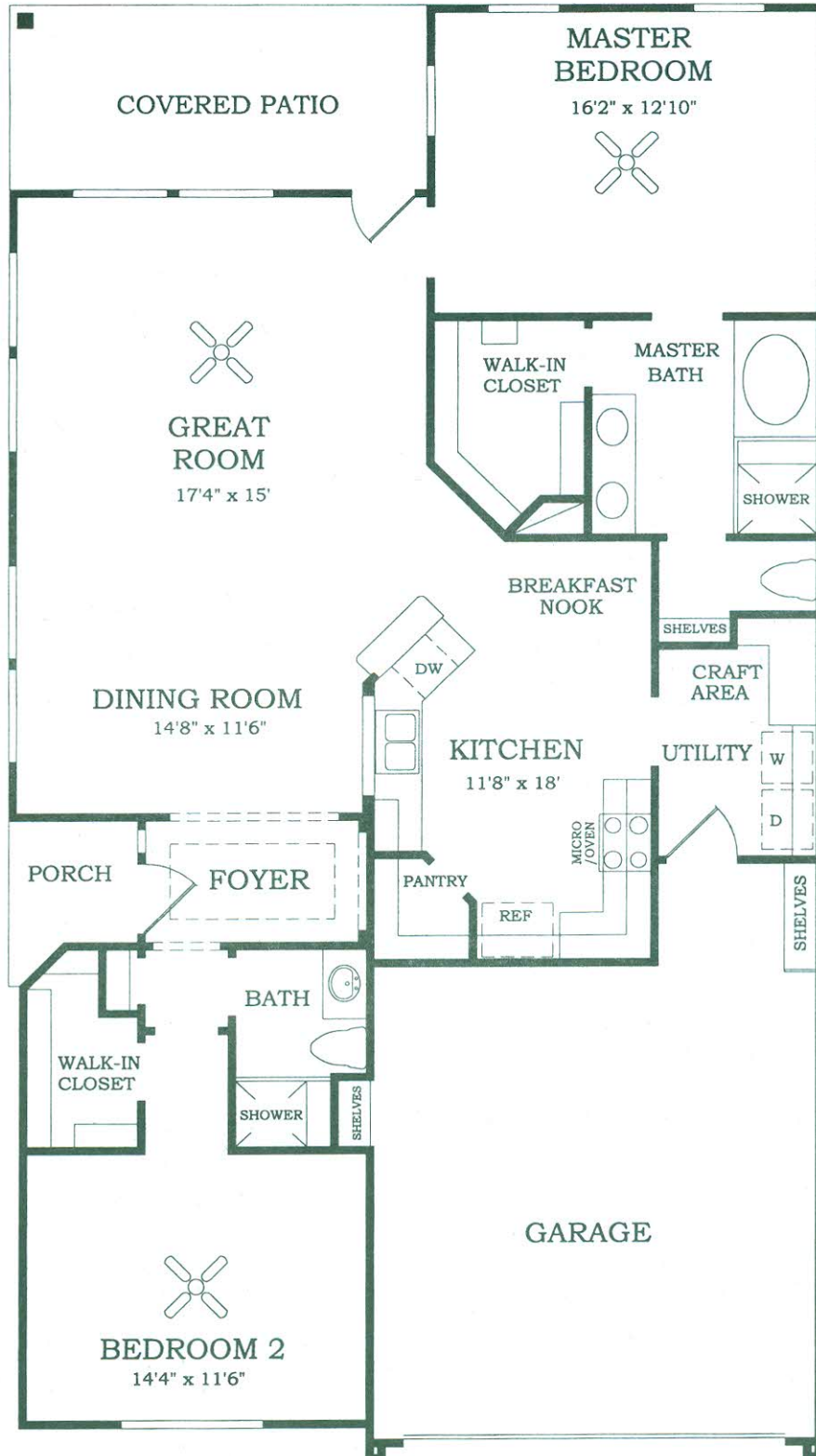
In our continuing effort to improve our product, Lennar Homes reserves the right to revise or delete specifications without notice. All features are "per plan" and are subject to change without notice. Copyright © 1998 Lennar Homes, Inc. 7/01



The Naples

MODEL #7260

TWO BEDROOMS, TWO FULL BATHS, GREAT ROOM OVERLOOKING COVERED PATIO, DINING ROOM, BREAKFAST AREA, LARGE WALK IN CLOSETS, OVERSIZED UTILITY ROOM WITH CRAFT AREA. TWO CAR GARAGE WITH STORAGE SHELVES. APPROXIMATELY 1569 SQ. FT.



In our continuing efforts to improve our product, Lennar Homes reserves the right to revise specifications and dimensions without notice. All dimensions are approximate. Layout may be revised. Landscaping shown is for conceptual purposes only.

Revised October 2000

