



**CHESMAR  
HOMES**

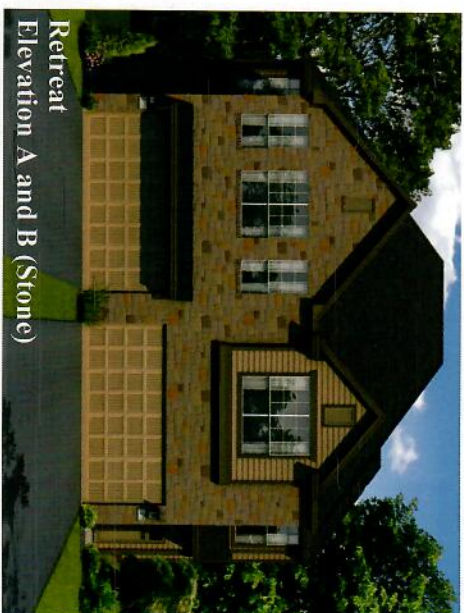
*Setting a Higher Standard*

# TOWNHOMES BUILDING—F

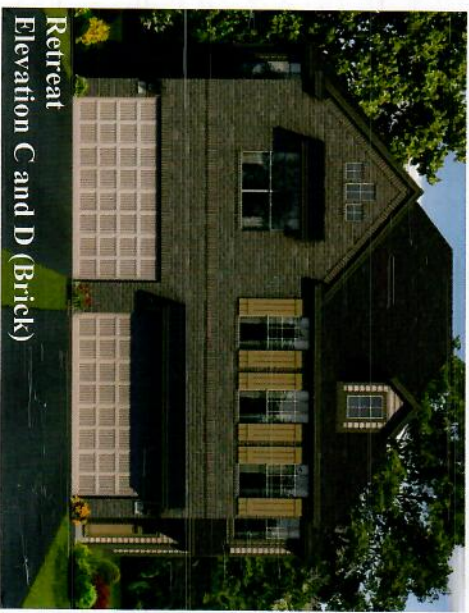
[CHESMAR.com](http://CHESMAR.com)



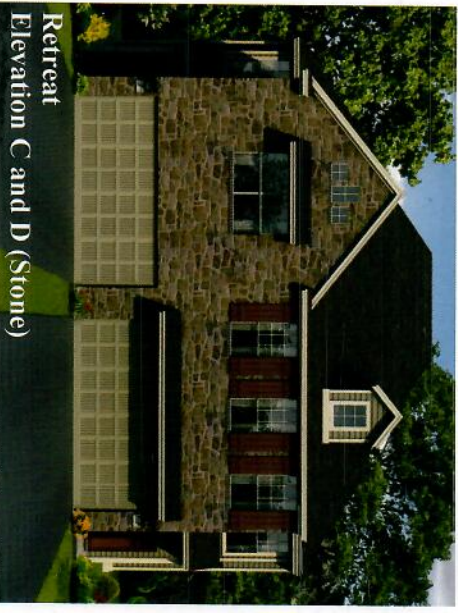
Retreat  
Elevation A and B (Brick)



Retreat  
Elevation A and B (Stone)



Retreat  
Elevation C and D (Brick)



Retreat  
Elevation C and D (Stone)





# STANDARD FEATURES

## The Townhome Collection

### ENERGY SAVINGS AND COMFORT

- **Built to the Environments For Living® Diamond and Certified Green Standards**
- **Environments For Living® Heating and Cooling Energy Use & Comfort Guarantee (limited)**
- **High Efficiency 16 SEER HVAC system with Trane® condenser and 80% AFUE Trane® furnace**
- 100% Compact Fluorescent Lamps and meets/exceeds current **Energy Star®** standards
- **R-13** wall insulation (living areas, except windstorm areas)
- **R-38** blown-in attic insulation (living areas)
- **R-22** insulation on sloped ceilings, at top plates per **Energy Star®** specs (living areas)
- Foil-backed **R-8** A/C ductwork
- **Polycel®** insulation around windows, doors, bottom plate and other openings
- Double-pane **LoE<sup>3</sup>** beige insulated vinyl windows that tilt-in for easy clean
- Energy efficient **Tech Shield®** or equivalent radiant barrier roof decking
- 1/2" **Dow® R-3** insulated sheathing, except windstorm areas
- **Honeywell®** programmable thermostat
- High-efficiency gas water heater
- Natural gas cooking

### EXTERIOR DETAILS

- Fiber Cement exterior siding with 25-year manufacturers limited warranty
- Fiber Cement exterior trim materials with 15-year manufacturers limited warranty
- Engineered post tension slab
- Concrete driveways and walks
- Full sod in front and back yard, fenced rear yard
- Full sprinkler system
- Landscaped front yard to developer requirement
- Two exterior faucets
- Covered front entries and rear patios or balconies on most plans
- **Wayne-Dalton®** Sonoma insulated garage doors, with garage door opener and two remote controls
- Weatherproof exterior electrical outlets near front and rear doors
- Craftsman Style 6-light woodgrain front door with accent paint
- Full light rear entry door with enclosed blind

### INTERIOR DETAILS

- 1/2"- 5lb rebond carpet pad with standard carpet. Carpeting with a five-year wear limited warranty.
- 2" faux-wood blinds in all windows
- Arched sheetrock openings, per plan
- **Delaney®** distinctive door hardware with satin nickel finish
- **Energy Star®** rated multi-speed ceiling fan with light kit in family room, master bedroom, flex room and study, per plan. Blocked and wired for ceiling fans in secondary bedrooms and rear patios, per plan.
- Exterior electrical breaker service panel
- Folding stair or door access to attic, per plan
- Oil rubbed bronze iron spindle balusters, per plan
- Pre-wired for cable television outlets in family room, flex room, study and all bedrooms
- Pre-wired for telephones in kitchen, family room, flex room, study and all bedrooms
- Raised ceilings and rounded sheetrock corners
- Satin nickel designer light fixtures
- Smoke and carbon monoxide detectors, per code
- Smooth raised panel interior 2 Panel Arch Top passage doors
- Two-tone decorator color scheme, featuring Moth Gray walls with Shell White trim

### KITCHEN DETAILS

- 3 CM Granite countertops (choice of two colors standard) with polished square edge. Kitchen countertop overhangs for informal dining, per plan.
- **Brandom Cabinetry®** with 42" high uppers
- Complete **GE®** black or white appliance package including:
  - Extra-large **GE®** standard-clean energy efficient gas range
  - **Energy Star®** rated built-in **GE®** dishwasher
  - Built-in **GE®** microwave
  - **Energy Star®** top mount 21.2 cubic foot **GE®** refrigerator with icemaker
- **Delta®** Leland pull down sprayer faucet
- Recessed can lighting
- Stainless steel 50/50 under-mount sink with garbage disposal and tile backsplash
- Tile flooring in kitchen and breakfast area







**smile** knowing your home is protected for a full ten years.



## coverage that gives confidence.

Defining the 2-10 Home Buyers Warranty® Structural Home Warranty.

### 1 YEAR WORKMANSHIP WARRANTY

The 1 year workmanship warranty provides surety coverage from the day of closing. It provides clearly defined construction standards for defects in materials and workmanship for the first year. If the builder defaults on their obligation, the warranty insurer fixes the defect.

What is covered:\*

- 1 Roof Covering
- 2 Cabinets
- 3 Countertops
- 4 Door Panels
- 5 Exterior Siding
- 6 Hardwood Floor
- 7 Basement Floor
- 8 Ceramic Tile
- 9 Drywall
- 10 Interior Trim
- 11 Carpet
- 12 Paint
- 13 Fireplace

### 2 YEAR SYSTEMS WARRANTY

The 2 year systems warranty provides surety coverage from the day of closing. It provides clearly defined construction standards for defects in the distribution of electrical, plumbing and mechanical systems for a full two years. If the builder defaults on their obligation, the warranty insurer fixes the defect.

What is covered:\*

- 14 Supply Piping
- 15 Waste Piping
- 16 Ductwork
- 17 Electrical Wiring



### 10 YEAR STRUCTURAL WARRANTY

The 10 year insurance-backed structural warranty provides 10 full years of structural defect coverage from the day of closing. It protects designated load-bearing elements of the home caused by failure that affects their load-bearing function to the extent that the home becomes unsafe, unsanitary or otherwise unlivable.

What is covered:\*

- |                       |                  |
|-----------------------|------------------|
| 18 Roof Framing       | 21 Columns       |
| 19 Load-Bearing Walls | 22 Foundation    |
| 20 Beams              | 23 Floor Framing |



LONG LIVE HAPPY HOMES®

2-10.com