

Harris County Appraisal District



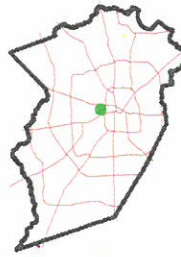
0 50 100 200 Feet

PUBLICATION DATE: 1/5/2021

Geospatial or map data maintained by the Harris County Appraisal District is for informational purposes and may not have been prepared for or be suitable for legal, engineering, or surveying purposes. It does not represent an on-the-ground survey and only represents the approximate location of property boundaries.



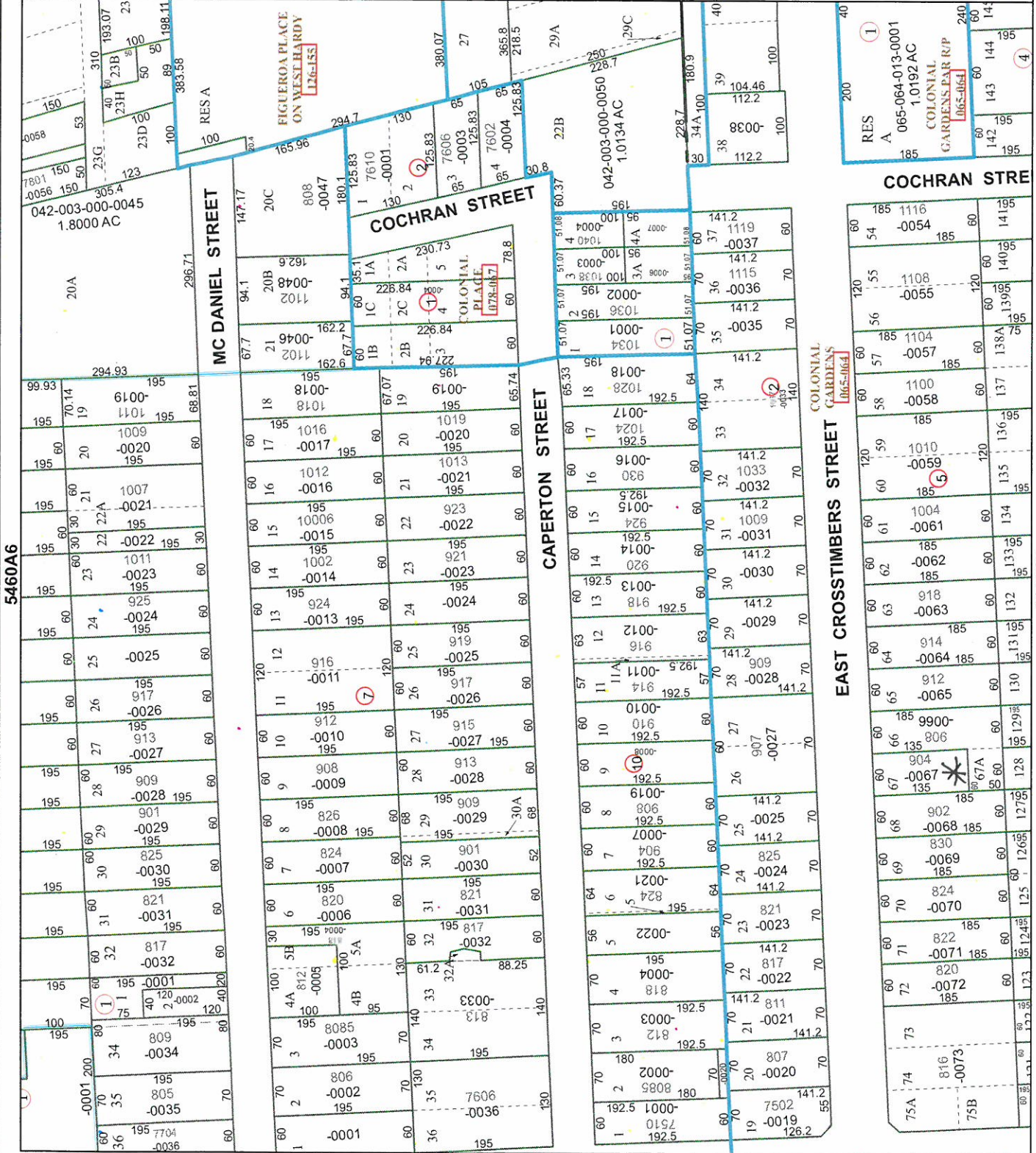
MAP LOCATION



FACET 5460A10

8	5	6	7	8
12	9	10	11	12
4	1	2	3	4

5460A11



5460A6

5460A9

5460C2