

DESIGNS

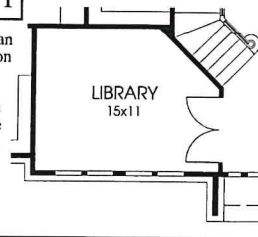
Plan 3911

This home contains approximately 3,911 square feet and includes four bedrooms and three and a half baths.



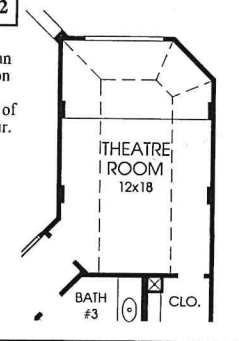
OPTION 1

This floorplan has the option for a library with double french doors in lieu of the living room.



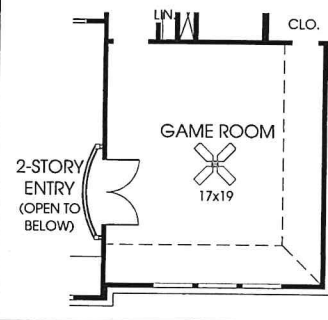
OPTION 2

This floorplan has the option for a theatre room in lieu of bedroom four.



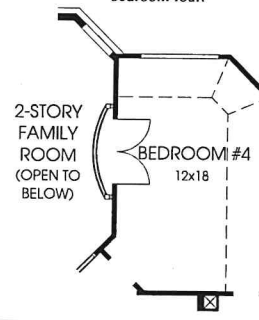
OPTION 3

This floorplan has the option for a juliet balcony with double french doors in the game room.



OPTION 4

This floorplan has the option for a juliet balcony with double french doors in bedroom four.

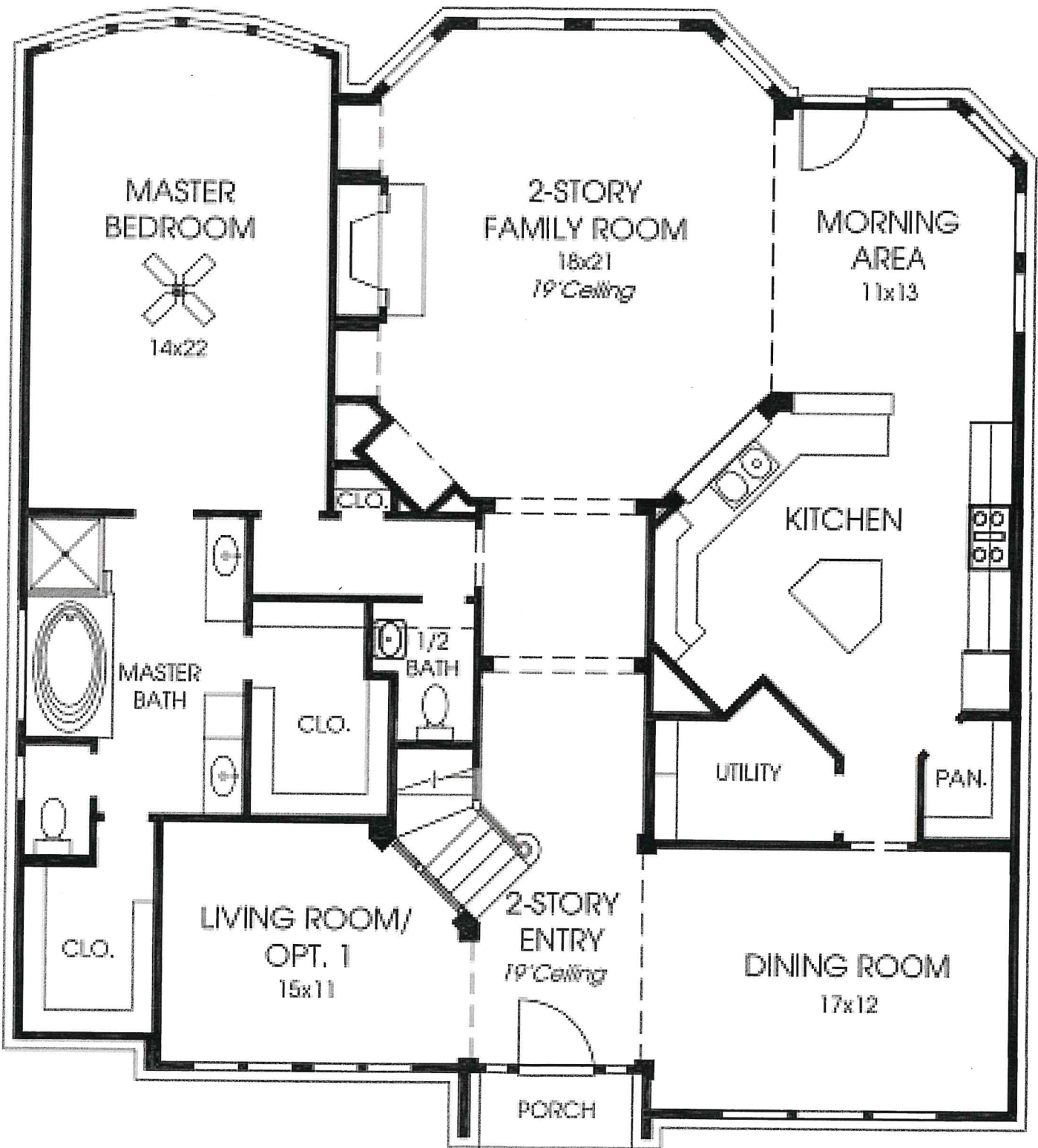


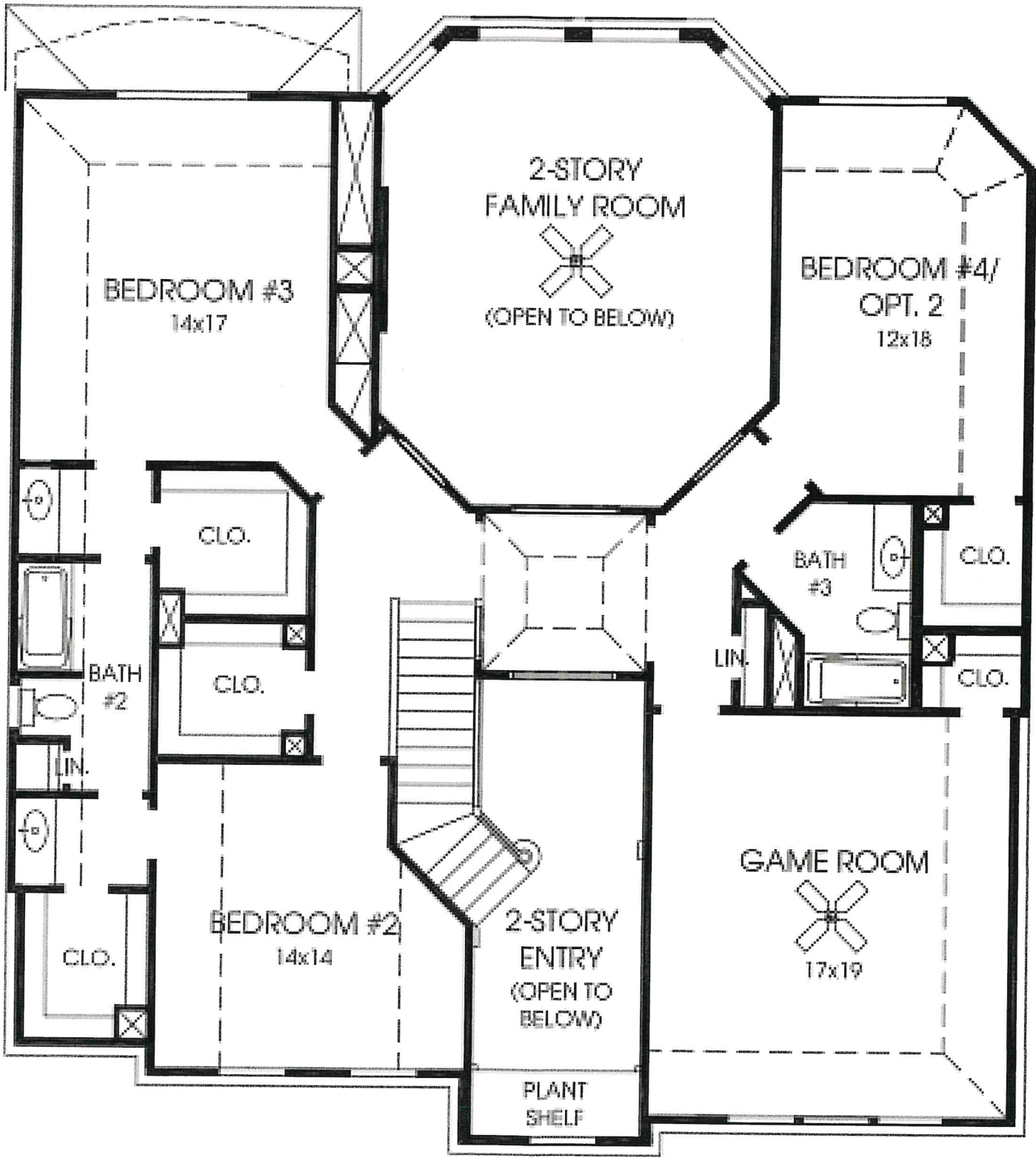
Not included: inside keyed deadbolt locks, refrigerators, furnishings, drapery, plants, decorator items and all other personal property being used in model homes. Builder reserves the right to make changes in the plans and specifications, and to substitute material of similar quality. Room dimensions indicate approximate inside area measurements.
JULY 2007 © 2007 Perry Homes (CL&CL-W)

Note: The options shown on this brochure are available at an additional cost.

PERRY HOMES







BEDROOM #3
14x17

2-STORY
FAMILY ROOM
(OPEN TO BELOW)

BEDROOM #4/
OPT. 2
12x18

CLO.

BATH
#3

CLO.

BATH
#2

CLO.

CLO.

CLO.

BEDROOM #2
14x14

2-STORY
ENTRY
(OPEN TO
BELOW)

GAME ROOM
17x19

PLANT
SHELF