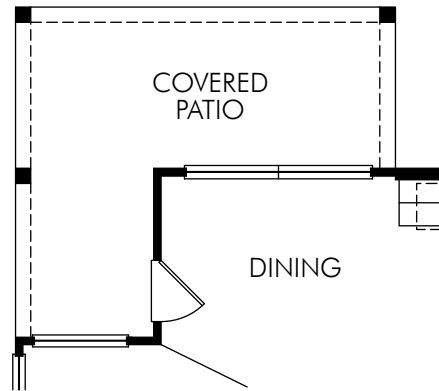


## Shadowdale Terrace

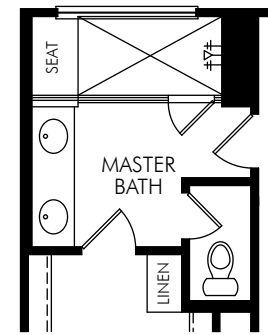
The Villa 1942

1,929 sq. ft. | 3 Bed | 2.5 Bath | 2 Car Garage | 2 Story

Street Address  
City, State ZIP  
Phone



① OPT. EXTENDED COVERED PATIO



② OPT. MASTER BATH

## Shadowdale Terrace

First and Second Floor

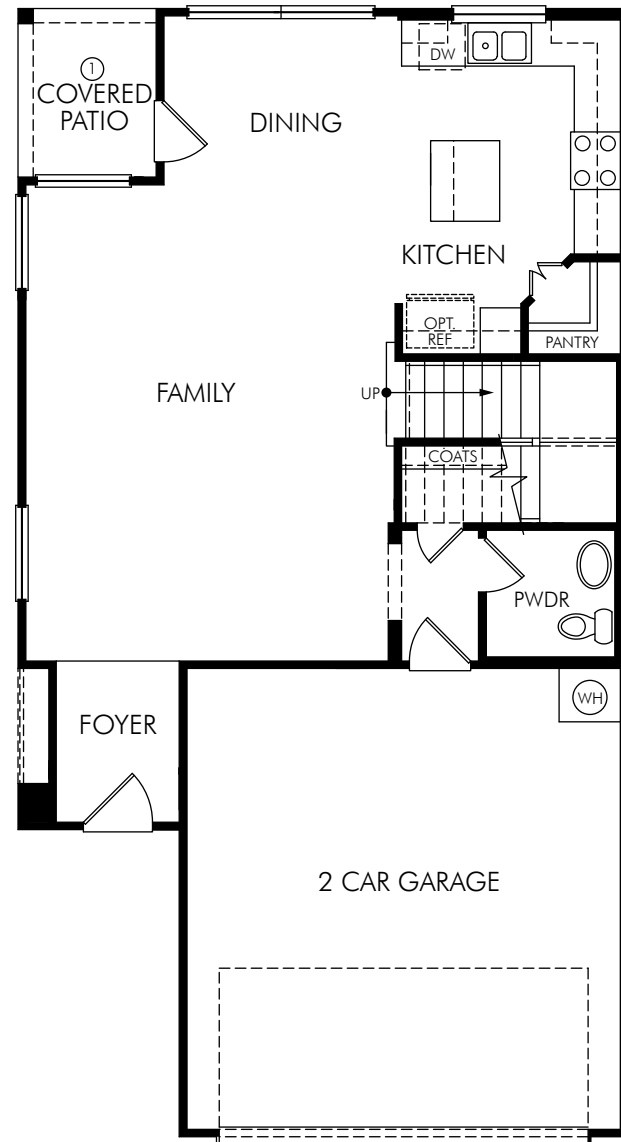
The Villa 1942 Options

1,929 sq. ft. | 3 Bed | 2.5 Bath | 2 Car Garage | 2 Story

Pictures and other promotional materials are representative and may depict or contain options, upgrades, landscaping, and extra design features that are not included as part of the home and/or may not be available in all communities. Floor plans, elevations, options, home features, and community information are subject to change at any time without notice or obligation. Square footages and dimensions are approximate and may vary in construction and depending on the standard of measurement used, engineering and municipal requirements, or other site-specific conditions. All renderings and floor plans are an artist's conceptual drawings and may vary from the actual plans and homes as built, including, without limitation, window, door and other improvement locations and changes required by governmental authority or to accommodate options or value engineering. Further, renderings may not be drawn to scale and homes may be constructed with a floor plan that is the reverse of the rendering. Plans are copyrighted and/or otherwise subject to intellectual property rights of Meritage Homes and cannot be reproduced or copied without its prior written consent. Not an offer or solicitation to sell real property. Offers to sell real property may only be made and accepted at the sales center for individual Meritage Homes communities. See sales associate for details. Meritage Homes® is a registered trademark of Meritage Homes Corporation. ©2014 Meritage Homes Corporation. All rights reserved.

Rev 01/17  
HOU 1942



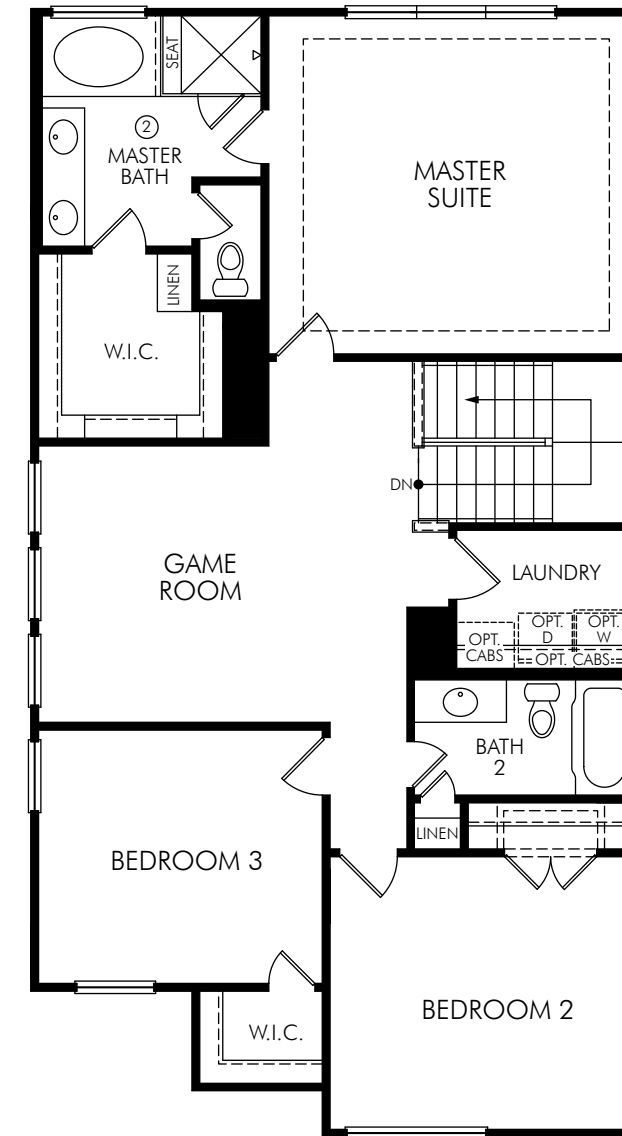


### Shadowdale Terrace

The Villa 1942 First Floor

1,929 sq. ft. | 3 Bed | 2.5 Bath | 2 Car Garage | 2 Story

**FLEX LIVING OPTIONS:** Extended Covered Patio.



### Shadowdale Terrace

The Villa 1942 Second Floor

1,929 sq. ft. | 3 Bed | 2.5 Bath | 2 Car Garage | 2 Story

**FLEX LIVING OPTIONS:** Master Bath.

Pictures and other promotional materials are representative and may depict or contain options, upgrades, landscaping, and extra design features that are not included as part of the home and/or may not be available in all communities. Floor plans, elevations, options, home features, and community information are subject to change at any time without notice or obligation. Square footages and dimensions are approximate and may vary in construction and depending on the standard of measurement used, engineering and municipal requirements, or other site-specific conditions. All renderings and floor plans are an artist's conceptual drawings and may vary from the actual plans and homes as built, including, without limitation, window, door and other improvement locations and changes required by governmental authority or to accommodate options or value engineering. Further, renderings may not be drawn to scale and homes may be constructed with a floor plan that is the reverse of the rendering. Plans are copyrighted and/or otherwise subject to intellectual property rights of Meritage Homes and cannot be reproduced or copied without its prior written consent. Not an offer or solicitation to sell real property. Offers to sell real property may only be made and accepted at the sales center for individual Meritage Homes communities. See sales associate for details. Meritage Homes® is a registered trademark of Meritage Homes Corporation. ©2014 Meritage Homes Corporation. All rights reserved.