

FIRST FLOOR

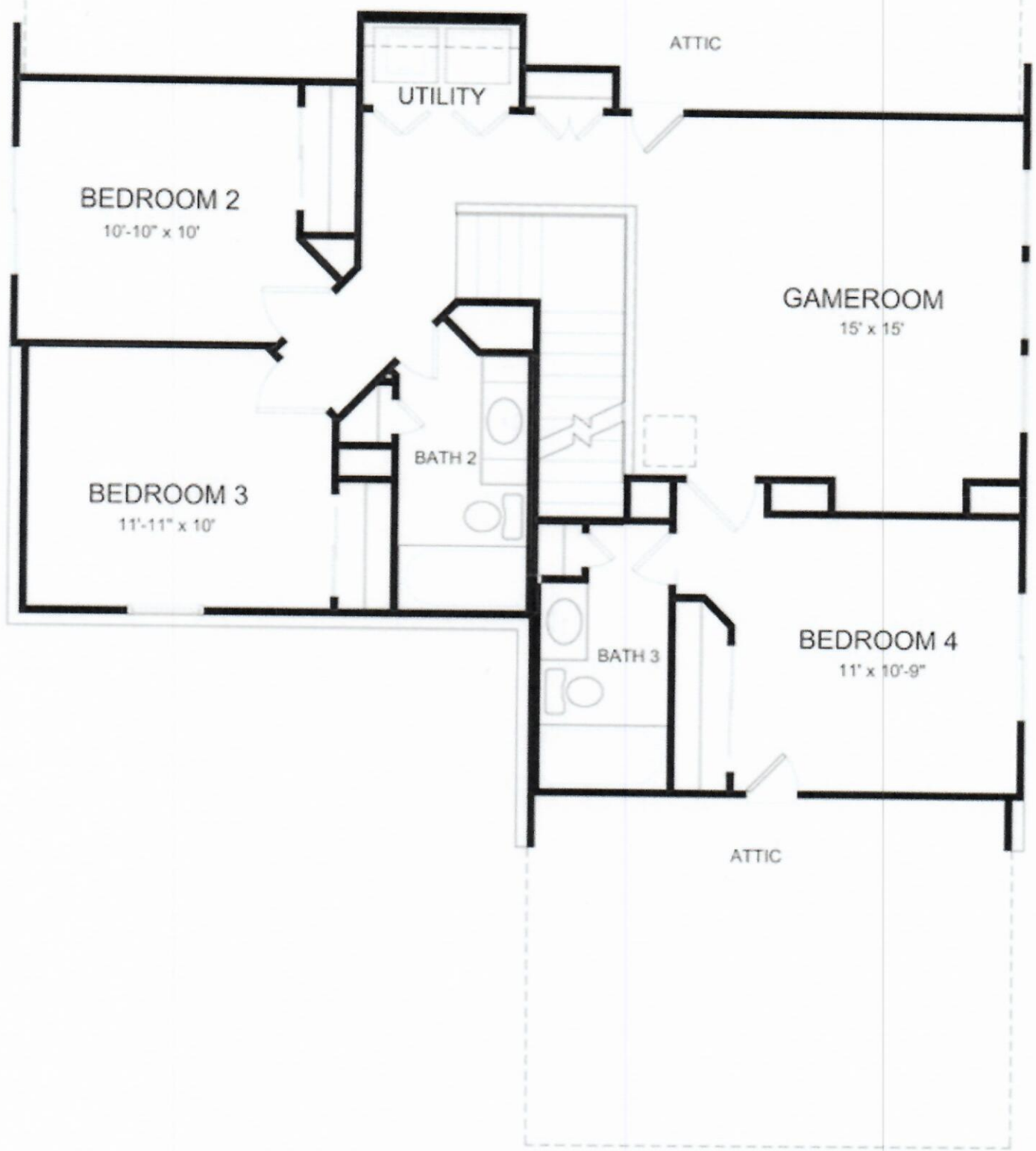


FIREPLACE OPTION AT
FAMILY ROOM



VANITY OPTION AT
MASTER BATH

FIRST FLOOR OPTIONS



SECOND FLOOR



GE Appliances

DISCLAIMER: Model numbers are subject to change without notice. GE will provide equivalent or higher level appliances in the event of shortage or discontinuation.***

UPGRADE 3 STAINLESS

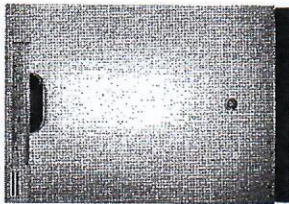


Model#: JGB650SEFSS

GE® 30" Free-Standing Gas Range

Approx Dimensions (HxDxW):
46 1/2 in X 28 3/4 in X 30 in

- 17,000 BTU Power Boil Burner - Delivers intense heat for fast boiling
- Center Oval Burner - Large oval fifth burner is ideal for griddle or odd-size cookware
- Precise Simmer Burner - Delicate foods don't burn with low, even heat
- Heavy-Cast, Continuous Grates - Allow for easy movement of pans between burners



Model#: GDF520PSFSS

GE® Dishwasher with Front Controls

Approx Dimensions (HxDxW):
34 in X 24 in X 23 3/4 in

- GE's most advanced wash system - Consistently clean and dry dishes are ensured with GE's most advanced wash system, featuring 65% more wash power.* *Wash power delivered to each rack. Compared to previous GE models.
- Piranha™ Hard Food Disposer with Removable Filter - To ensure consistently clean items, this stainless steel blade rotates at 3,600 RPM to pulverize food particles and helps to prevent large particles from clogging the wash arms
- Steam Prewash - Loosens tough soils before any cycle, virtually eliminating the need for soaking or pre-rinsing dishes



Model#: JVM7195SFSS

GE® 1.9 Cu. Ft. Over-the-Range Sensor Microwave Oven

Approx Dimensions (HxDxW):
16 1/2 in X 15 1/2 in X 29 3/4 in

- 1.9 cu. ft. capacity - 1000 watts (IEC-705 test procedure)
- Sensor cooking controls - Automatically adjusts time and power
- Power Saver mode - Delivers a reduction in power consumption
- USDA MyPlate menu - Offers healthy pre-programmed food options and recipes

BUYER SIGNATURE: _____

DATE: _____

BASIC PLUS SERIES

Date Created: 08/27/13